

# Product Overview 2022

## *Video Security*

SMART Product Line

**GRUNDIG**



# What can you expect from the new SMART product line from GRUNDIG Security?

Leaving our tried and tested reliability aside, you will also find a whole lot of image analysis functions, supported by artificial intelligence (AI). And there's a lot of functionality available. You can use facial recognition, for instance, to recognise people, or the LPR function to identify vehicle licence plates. Or you can quite simply reduce the frequency of false alarms signalling a spurious break-in or perimeter breach, by classifying objects as 'vehicle', 'person' or 'other'.

The SMART cameras from GRUNDIG Security can recognise faces in crowds of people, count heads and determine the length of queues at your supermarket till, therefore helping you to make the best possible use of your resources. They'll let you know when unauthorised people cross pre-defined lines or enter certain areas, and they'll trigger an alarm when objects are left at your doorstep.

These are just a few examples out of a plethora of possibilities which the exceptionally flexible SMART line products from GRUNDIG Security are able to offer.

So, if you want more than just pretty pictures and long recording times, please get in touch.

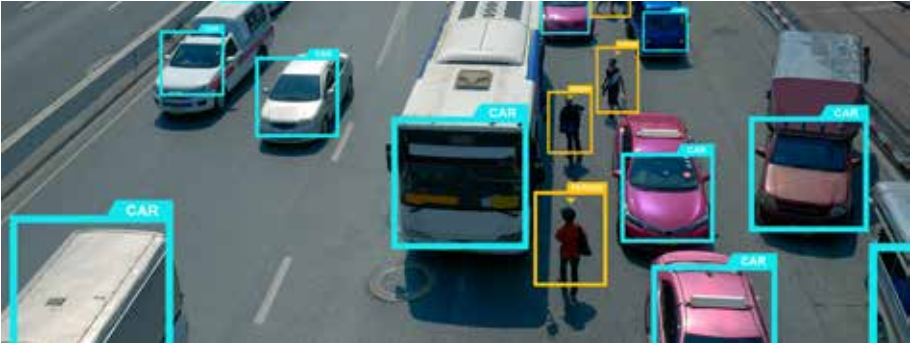
We look forward to hearing from you!



# Content

- Image analysis functions ..... 3
- IP Cameras
  - Eyeball/Dome..... 6
  - Bullet ..... 7
- Recorders ..... 8
- Mobile App ..... 9
- Accessories ..... 10
- Article numbers - structure and composition ..... 11
- Guarantee ..... 11
- Sustainability ..... 11

## Classify persons & vehicles



The GRUNDIG Security Smart Line cameras allow for clear classification of people and vehicles. This enables users, e.g. control centre operators, to define alarm events and responses even more precisely. The bidirectional audio function also allows direct communication with people on site.

## Identify licence plates



The licence plate recognition function enables reliable and automated access control, for example on a company’s premises. The legitimisation of the respective vehicle is regulated via black and white lists.

## Identify faces



As soon as a face is recognised, alarm information, including attributes such as gender and age, is reported. The data is compared with the database: If the face is not stored in the database, it is recognised as "unknown". Wearing a face mask can also be defined as a recognition attribute.

## Enter area



The “enter area” detection function allows the precise definition of areas. As soon as someone enters the defined area, an alarm message is triggered. The moving object is classified as a person, motorised or non-motorised vehicle. Four different customisable rules are available for the alarm response.

## Detect left/removed objects



The "left/removed objects” detection function offers two usage options: objects located in a predefined area can be quickly identified. The function can also be used to detect the removal of any objects in this area.

## Manage queues



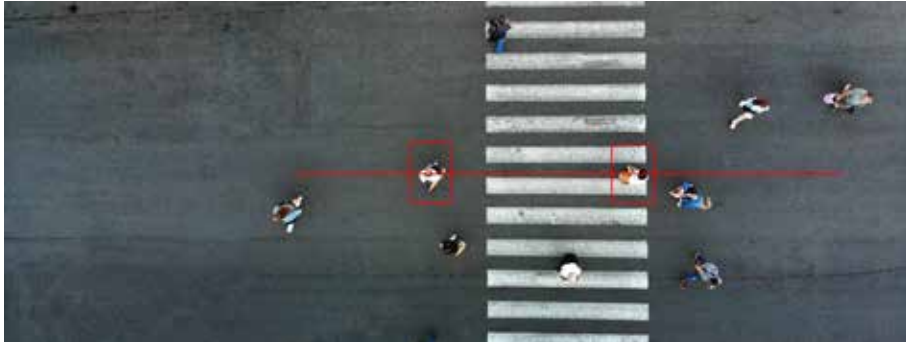
An alarm will be triggered as soon as a queue reaches a certain length. Alternatively, this function can be used to trigger an event by exceeding a certain dwell time.

## Use Heat Map



The heat map function facilitates the identification of areas where people prefer to stay or which are less frequented.

## Cross lines



If "Line crossing" is activated, crossing a previously defined line triggers an alarm message. The corresponding object is classified as a person, motorised or non-motorised vehicle. Four different customisable rules are available for the alarm response.

## Analyse crowds



An alarm is triggered as soon as the set number of people in a predefined area is exceeded. An acoustic message can also be emitted.

## Count people/objects



The "people/object counting" analysis function reliably counts people, moving objects as well as motorised or non-motorised vehicles, also in two different directions. By means of powerful reports, the collected data can be evaluated for further use.

## Detect unusual noises



This audio analysis function detects unusual noises such as barking dogs, baby crying and gunshots, thereby triggering an alarm. The sensitivity of this function can be adjusted infinitely.

**GU-CI-AC5617E****GU-CI-AC5637E****GU-CI-AC8616E****GU-CI-AC5617V****GU-CI-AC5637V****GU-CI-AC8616V**

Smart

Smart

Smart

Smart

Smart

Smart

Video Resolution	2880 x 1620	2880 x 1620	3840 x 2160	2880 x 1620	2880 x 1620	3840 x 2160
Sensitivity (Colour)	0.004 Lux @ F1.6 (AGC ON)	0.004 Lux @ F1.6 (AGC ON)	0.009 Lux @ F1.6 (AGC ON)	0.004 Lux @ F1.6 (AGC ON)	0.004 Lux @ F1.6 (AGC ON)	0.009 Lux @ F1.6 (AGC ON)
Lens Focal Length	2.8mm	2.8~12 mm, motorised, autofocus	2.8mm	2.8mm	2.8~12 mm, motorised, autofocus	2.8mm
Colour/B&W	IR-cut filter removable (ICR)					
Wide Dynamic Range	120 dB		72 dB (Digital Wide Dynamic Range)		72 dB (Digital Wide Dynamic Range)	
Image Enhancement	BLC, 3D DNR, HLC					
Max. IR range	up to 30 m	up to 45 m	up to 30 m	up to 20 m	up to 30 m	up to 20 m
Video Compression	H.265, H.265+, H.264, H.264+, MJPEG					
SD Memory	Micro-SD, SDHC, SDXC, from 32 up to 256 GB					
Audio Input/Output	Built-in microphone	1 audio input, 1 audio output	Built-in microphone	Built-in microphone	1 audio input, 1 audio output	Built-in microphone
Audio Detection	Detects unusual sounds: barking dogs, baby crying, gunshots, sudden increase and decrease in noise					
Licence Plate Recognition	in conjunction with SD card or Smart Recorder		in conjunction with SD card or Smart Recorder			
Intelligent Video Analytics	Detection functions for: movement, intrusion, person/vehicle, line crossing, remove objects, count objects, faces, heat map, queues, crowds					
Operating Temperature	-35 °C ~ 60 °C (-31 °F ~ 140 °F)					
Supply Voltage	12 VDC, PoE (IEEE 802.3af)					
Power Consumption	max. 5.5 W	max. 9.5 W	max. 5.5 W	max. 5.5 W	max. 7 W	max. 5.5 W





**GU-CI-AC5617T**

Smart



**GU-CI-AC5637T**

Smart



**GU-CI-AC8616T**

Smart

Video Resolution	2880 x 1620	2880 x 1620	3840 x 2160
Sensitivity (Colour)	0.004 Lux @ F 1.6 (AGC ON)	0.004 Lux @ F 1.6 (AGC ON)	0.009 Lux @ F 1.6 (AGC ON)
Lens Focal Length	3.6mm	2.8~12 mm, motorised, autofocus	3.6mm
Colour/B&W	IR-cut filter removable (ICR)		
Wide Dynamic Range	120 dB		72 dB (Digital Wide Dynamic Range)
Image Enhancement	BLC, 3D DNR, HLC		
Max. IR range	up to 30 m	up to 45 m	up to 30 m
Video Compression	H.265, H.265+, H.264, H.264+, MJPEG		
SD Memory	Micro-SD, SDHC, SDXC, from 32 up to 256 GB		
Audio Input/Output	Built-in microphone	1 audio input, 1 audio output	Built-in microphone
Audio Detection	Detects unusual sounds: barking dogs, baby crying, gunshots, sudden increase and decrease in noise		
Licence Plate Recognition	in conjunction with SD card or Smart Recorder		
Intelligent Video Analytics	Detection functions for: movement, intrusion, person/vehicle, line crossing, remove objects, count objects, faces, heat map, queues, crowds		
Operating Temperature	-35 °C ~ 60 °C (-31 °F ~ 140 °F)		
Supply Voltage	12 VDC, PoE (IEEE 802.3af)		
Power Consumption	max. 5.5 W	max. 9.5 W	max. 5.5 W



## The SMART line from GRUNDIG Security: NDAA compliant

NDAA is the abbreviation for the National Defense Authorization Act. The John S. McCain National Defense Authorization Act (NDAA) for Fiscal Year 2019 was signed into law on August 13, 2018 and effective from August 2020. The law, specifically Section 889, prohibits federal agencies, their contractors and grant or loan recipients from procuring or using “telecommunications and video surveillance equipment or services” from specific Chinese companies as a “substantial or essential component of any system, or as critical technology as part of any system.” The SMART product line from GRUNDIG Security complies with the requirements of this law.





**GU-RN-AC8104P**

Smart



**GU-RN-AC8108P**

Smart



**GU-RN-AC8116P**

Smart



**GU-RN-AP8216N**

Professional

IP Inputs	4 channels	8 channels	16 channels	16 channels
Recording Bandwidth	up to 50 Mbps	up to 128 Mbps	up to 112 Mbps	up to 256 Mbps
Outgoing Bandwidth	up to 64 Mbps	up to 128 Mbps	up to 96 Mbps	up to 128 MBit/s
Recording Resolution	8 Megapixel, 5 Megapixel, 3 Megapixel, 1080p, 960p, 720p			
Video Compression	H.265, H.265+, H.264, H.264+, MJPEG			
Recording Mode	Continuous, Event, Motion, Video Loss, Schedule			
Search Mode	Date/Time, Event, Motion, Search Backup			
Intelligent Search Functions	Search for people, motorised vehicles, non-motorised vehicles, entering area, line crossing, thumbnails, markers, faces and attributes, presence, visitor frequency, vehicle licence plate			
External Backup	USB HDD, USB Memory, Network			
HDMI Output	4K (3840 × 2160), 2K (2560 × 1440), 1920 × 1080, 1600 × 1200, 1900 × 1200, 1440 × 900, 1280 × 1024, 1280 × 720, 1024 × 768			HDMI1: 3840 × 2160 (EDID/4K), 2560 × 1440, 1920 × 1080, 1440 × 900, 1280 × 1024, 1280 × 720, 1024 × 768 HDMI2: 1920 × 1080, 1440 × 900, 1280 × 1024, 1280 × 720, 1024 × 768
Hard Disk Bay	1 x SATA III, 1 x eSATA		2 x SATA III	2 x SATA III, 1 x eSATA
Max. Storage Capacity	up to 10 TB capacity for each HDD			
Audio Input/Output	1 audio input, 1 audio output			
Alarm Input/Output	4/1	8/1	8/1	16/1
Power over Ethernet	4 independent 10/100 Mbps PoE Ethernet interfaces	8 independent 10/100 Mbps PoE Ethernet interfaces	16 independent 10/100 Mbps PoE Ethernet interfaces	
Supply Voltage	48 VDC, power supply included			12 VDC ± 10 %, power supply included
Power Consumption	≤ 5 W without hard disk	≤ 6 W without hard disk	≤ 8 W without hard disk	≤ 18 W without hard disk



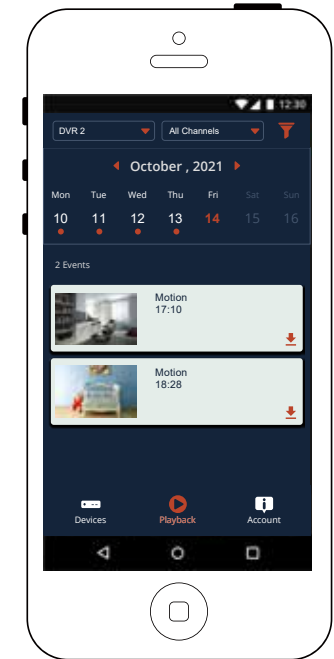
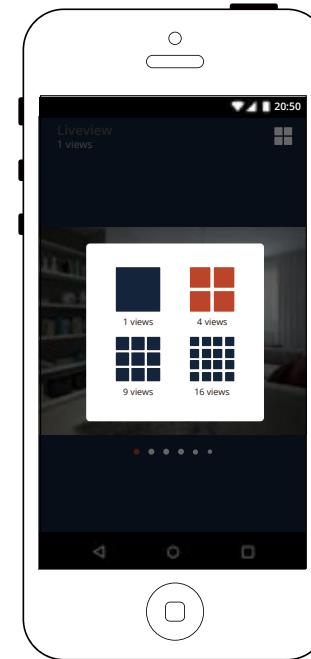
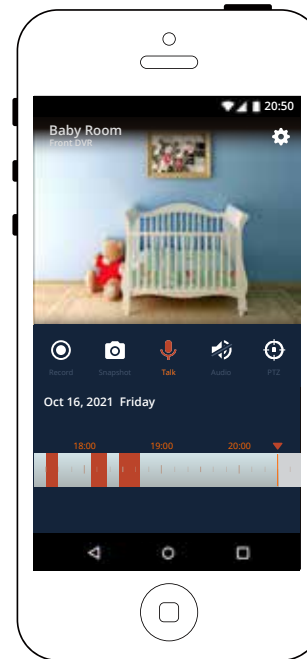
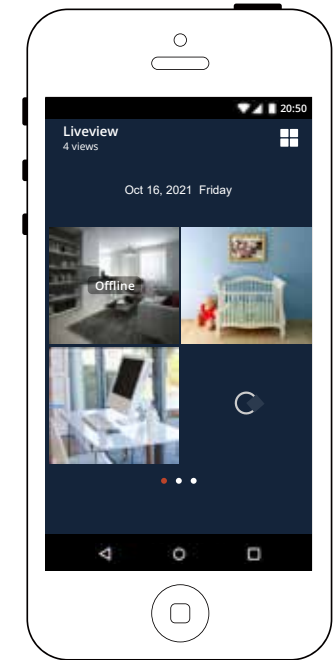
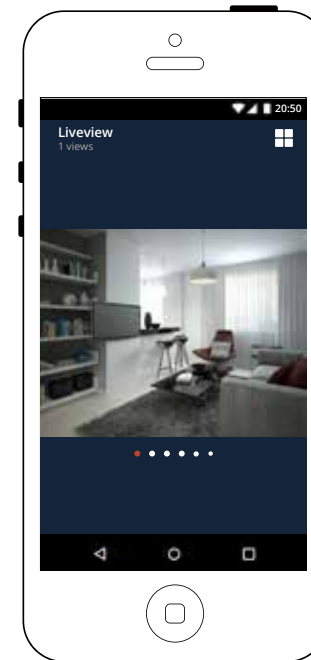
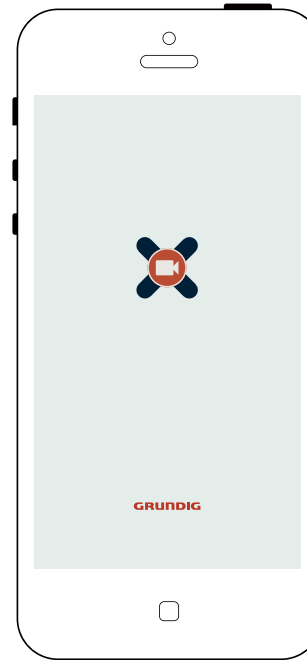
# THE XCMS APP BY GRUNDIG SECURITY: INSTALLED AND CONFIGURED IN NO TIME

The XCMS app is a surveillance application for mobile phones and tablets that support cloud P2P function.

The Mobile Software App has been designed to help small businesses effectively operate and manage security devices from a smartphone or tablet.

The power to view live images, play back footage, and receive notifications remotely keeps owners and operators in touch with their business, even when away.

- Real-time video preview of up to 16 channels
- Swipe for PTZ control and camera movement, pinch to zoom in/out in preview mode
- Display the cause of alarm triggering
- Push alarm notification
- Snapshot function
- Manage up to 255 device sets: Add/delete/modify device profiles





GU-CI-AC5617E  
GU-CI-AC8616E



GU-BR-AJX01  
Junction Box Pendant Mount



GU-BR-AJX02  
Junction Box



GU-BR-AMW04  
Wall Mount Bracket



GU-CI-AC5637E



GU-BR-AMW05  
Wall Mount Bracket



GU-CI-AC5617V  
GU-CI-AC8616V



GU-BR-AJX09  
Junction Box Pendant Mount



GU-BR-AJX10  
Junction Box



GU-BR-AMF02  
Flush Mount Adapter



GU-BR-AMW04  
Wall Mount Bracket



GU-CI-AC5637V



GU-BR-AJX06  
Junction Box



GU-BR-AJX07  
Junction Box Pendant Mount



GU-BR-AJX08  
Dual Junction Box incl. PoE Switch



GU-BR-AMF01  
Flush Mount Adapter



GU-BR-AMW05  
Wall Mount Bracket



GU-CI-AC5617T  
GU-CI-AC8616T



GU-BR-AJX01  
Junction Box Pendant Mount



GU-BR-AJX02  
Junction Box



GU-BR-AJX05  
Junction Box Hinged



GU-CI-AC5637T



GU-BR-AJX01  
Junction Box Pendant Mount



GU-BR-AJX02  
Junction Box



GU-BR-AJX05  
Junction Box Hinged



GU-BR-AJX01



GU-BR-AMP01  
Pendant Mount Bracket



GU-BR-AMW01  
Wall Mount Bracket



GU-BR-AJX06



GU-BR-AMP01  
Pendant Mount Bracket



GU-BR-AMW01  
Wall Mount Bracket



GU-BR-AJX07



GU-BR-AMP01  
Pendant Mount Bracket



GU-BR-AMW01  
Wall Mount Bracket



GU-BR-AJX08



GD-BR-AMW08  
Wall Mount Bracket for PTZ Domes



GU-BR-AJX08A  
Adapter Junction Box



GU-BR-AJX09



GU-BR-AMP01  
Pendant Mount Bracket



GU-BR-AMW01  
Wall Mount Bracket



GU-BR-AMW01



GU-BR-AMC01  
Corner Mount Bracket



GU-BR-AML01  
Pole Mount Bracket

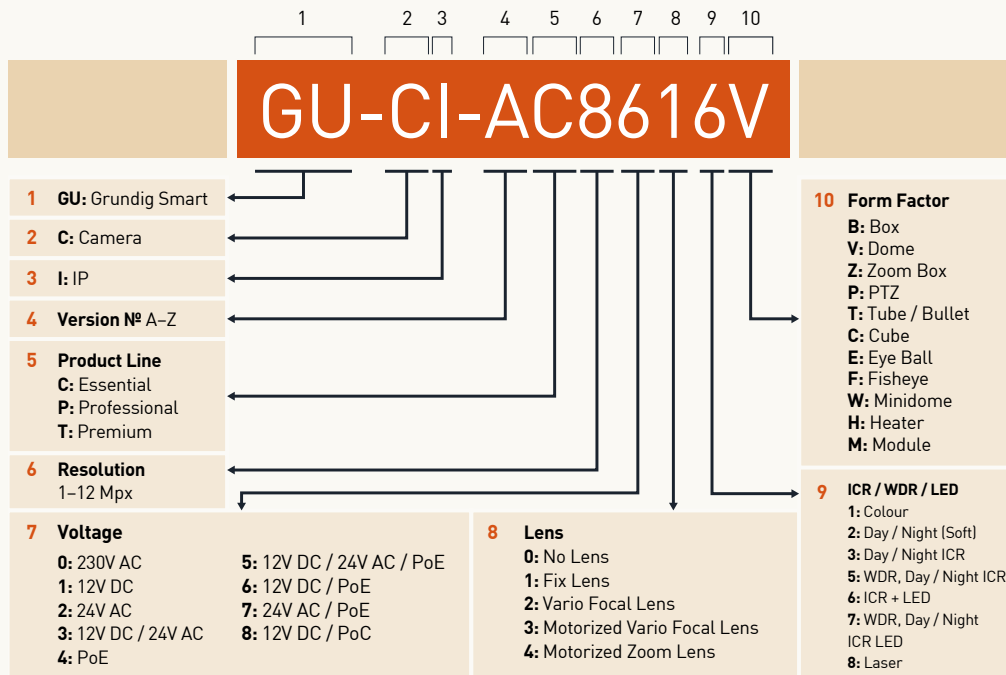


GU-BR-AMW02



GU-BR-AML01  
Pole Mount Bracket

## Structure and composition of the GRUNDIG Security article numbers



## 5 years Extended Guarantee

GRUNDIG Security offers a 5-year guarantee on all "SMART", "PRO" and "PREMIUM" series' cameras. Our goal: to further support our customers by making project maintenance easier and more cost-effective. The 5-year guarantee applies to all electronic components of the products mentioned above. Mechanical wear and tear on moving parts is not included. Please refer to our general terms and conditions.



## Our ambition: the pursuit of a more sustainable future

A holistic approach to sustainability and respect for all natural resources belong to our top priorities and are therefore an essential part of our DNA. This is also reflected in our products: they work as sustainably as possible while meeting the highest standards as regard to quality and aesthetics. During production, we consider the environment as much as possible, and we are always looking for ways to incorporate the idea of sustainability into our products.



## Environmentally friendly packaging

Our environmentally friendly packaging with less colour print is made from 100% recyclable material. To save resources, our detailed operating instructions are available online for download. The quick reference guides that come with the devices are printed on 100% recycled paper. In addition, our mostly fanless devices are distinguished by their low power consumption, which reduces the cost of electricity consumption.

[www.grundig-security.com](http://www.grundig-security.com)

Abetechs GmbH (GRUNDIG Security)

[info@grundig-security.com](mailto:info@grundig-security.com)

Errors excepted. GRUNDIG Security reserves the right to change specifications without notice | © ABETECHS GMBH 2022

**GRUNDIG**