



axxon
ONE

ALL-IN-ONE SOLUTION

Axxon One Unified VMS

www.axxonsoft.com

2.0



AXXONSOFT GLOBAL OFFICES



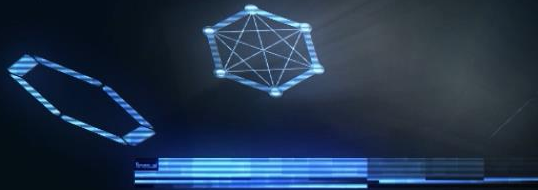
THE AMERICAS

USA
MEXICO
ARGENTINA
BRAZIL
PERU

EMEA

IRELAND (HQ)

GERMANY
SPAIN
ITALY
UK
FRANCE
BULGARIA
POLAND
BALTICS





Axxon One Unified VMS



Axxon One is scalable video management software (VMS) that fits both small and large security system installations, including those distributed across many locations. It supports the latest ONVIF standards, including profiles M and T, and delivers unique value through integrated solutions, customizable AI video analytics, and fast, intelligent search in video footage from multiple cameras.



Axxon One Unified VMS

AI Video Analytics

Full-cycle development of custom and general-purpose neural network analytics.

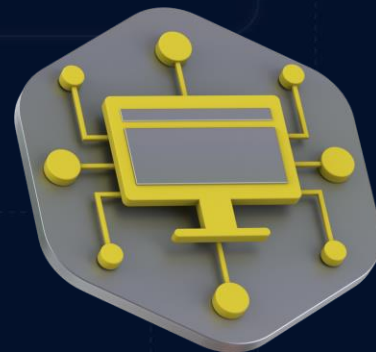


Intelligent Search

Smart search technologies for recorded video that enable you to quickly find recorded events of interest.

Integration

Comprehensive support for physical security systems, various IP devices, and standard communication protocols.



Automation

Flexible configuration of complex system response scenarios with GUI tools.





Partner Services



- Free version upgrade
- Product training
- Presale support
- Online hardware calculator
- 24/7 remote tech support



White Labeling

- Elevate your brand visibility with Axxon One's white labeling possibilities.
- Seamlessly integrate our powerful VMS platform with your unique brand identity.
- Customize logos, color schemes, and interfaces to reflect your brand's personality.
- Deliver tailored security solutions to your clients while maintaining brand consistency.
- Partner with AxxonSoft and stand out in the competitive security market with your branded solution.





System Design

Architecture, scalability, video streaming,
administration and maintenance



Distributed Architecture

SYSTEM DESIGN



- Up to 30 VMS servers at a site, unlimited sites in a distributed system.
- Unlimited clients of any type: desktop client, web client, mobile applications.
- End-to-end secure connections via HTTPS.

Desktop Client Multi-Site Connectivity

SCALABILITY

- Connect to servers at multiple sites directly or via the private cloud.
- Fast connection regardless of system size.
- Use a single client to monitor and configure independent systems.
- Create layouts with cameras from different locations.

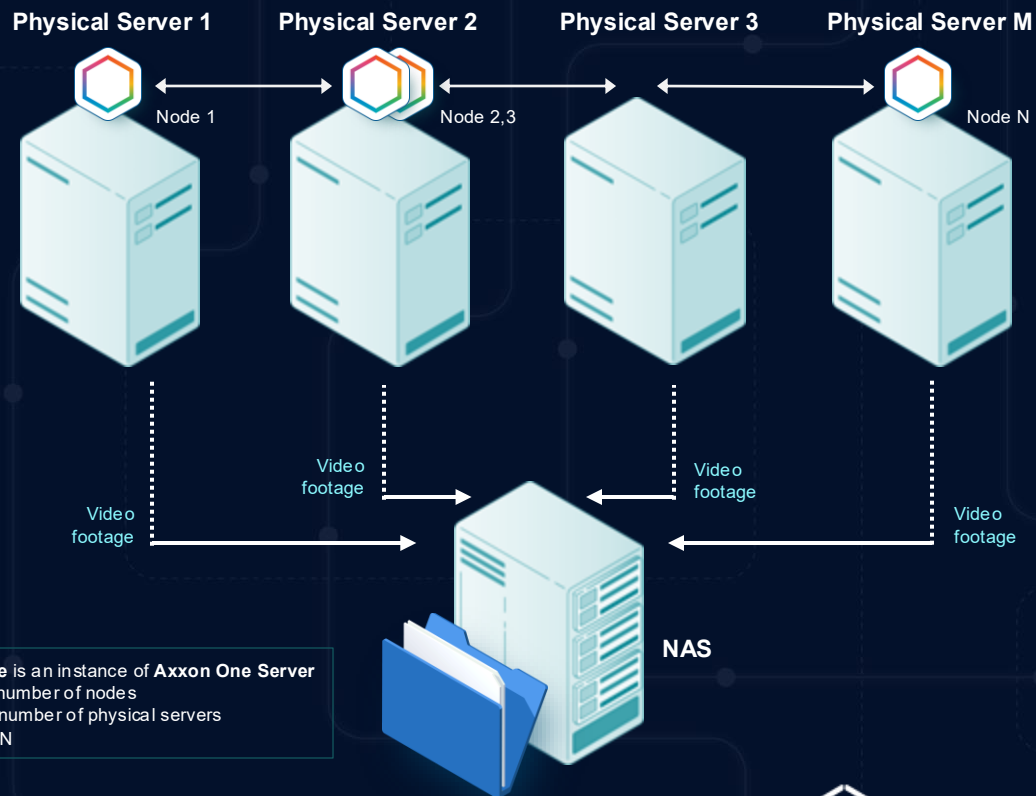




Failover

FAULT
TOLERANCE

- Failover quickly switches to a standby server when communication with the primary server is lost.
- The standby server automatically takes over all functions from the off-line or malfunctioning server. Live video streaming and recording resume immediately.
- You can suspend any server in the cluster with no system downtime, e.g., for maintenance.
- Supported failover types: 1+1, N+1, N+M.

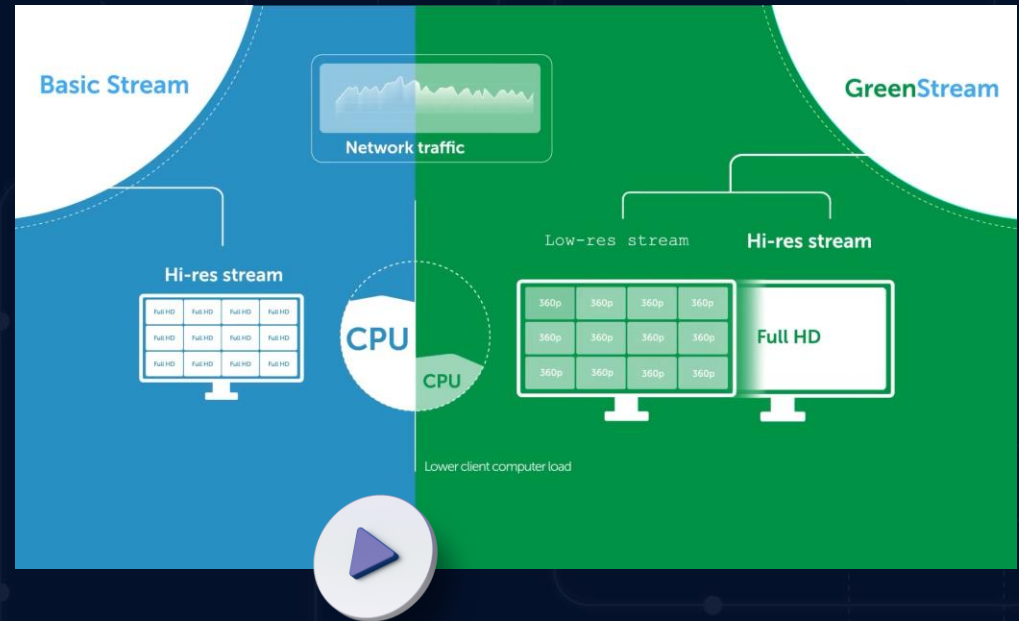




GreenStream Adaptive Video Streaming

RESOURCE
OPTIMIZATION

- GreenStream automatically selects the lowest-resolution camera stream sufficient for display, e.g., when multiple cameras are shown in one layout.
- When opening a camera in full screen, GreenStream switches to the hi-res video stream from the camera.
- Adaptive video streaming saves network bandwidth and client computing resources.





3+ Streams from IP Cameras

RESOURCE
OPTIMIZATION



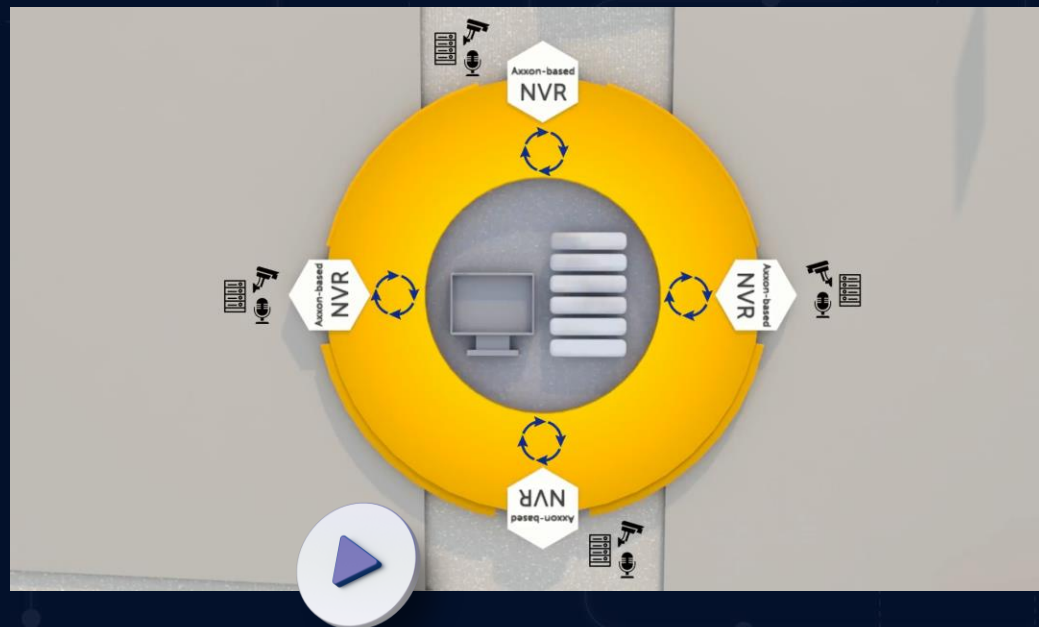
- Receive and process 3 and more video streams from an IP camera.
- Use separate streams for recording, display, and video analytics.
- GreenStream works more accurately by selecting the optimal stream to display.



Video Recorder Archive Replication

INTEROP DRIVER

- Video footage can be synced between independent Axxon One systems via the Interoperability Driver.
- Replication starts automatically when the source server is connected to the destination server.
- This can be used, for example, to centralize video storage of AxxonSoft-based NVRs installed in vehicles.



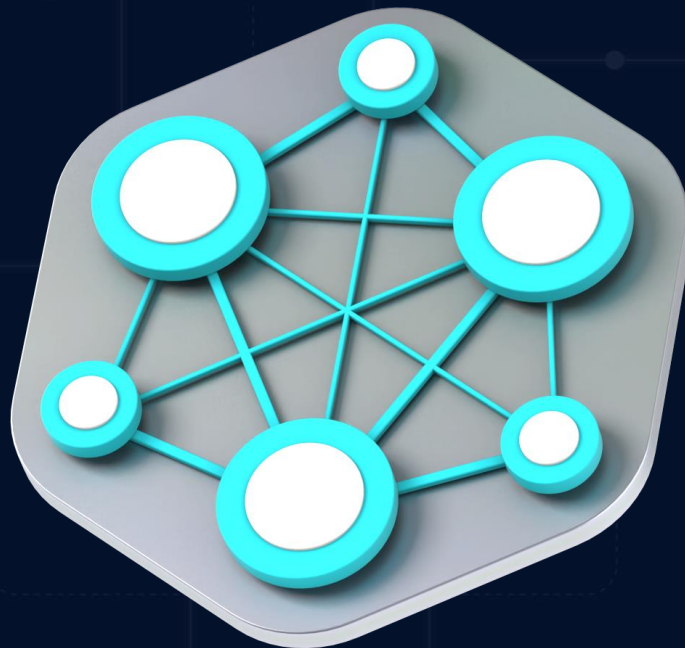


Licensing Methods

SYSTEM
ADMINISTRATION

- **License file:** Contains the data on basic hardware configuration of all servers (motherboard, CPU, HDD, video adapter, RAM, and network card). No replacing more than one basic hardware component or license transfer to another server is possible.
- **License file and Guardant dongle:** It is possible to upgrade server hardware and transfer a license to another server.
- **License server:** Flexible license management.

Note: The Guardant dongle method and the license server are unavailable in the US and Canada. For other regions, please contact local managers.





License Server

SYSTEM
ADMINISTRATION

- A single license file for multiple Axxon One servers.
- Arbitrary distribution of licensed objects, such as cameras, across servers.
- Easy migration of licenses between servers.
- Fast update of licenses at all connected sites.
- Secure connection to the license server (HTTPS). Only information related to license use is exchanged.



Note: The license server is unavailable in the US and Canada. For other regions, please contact local managers.

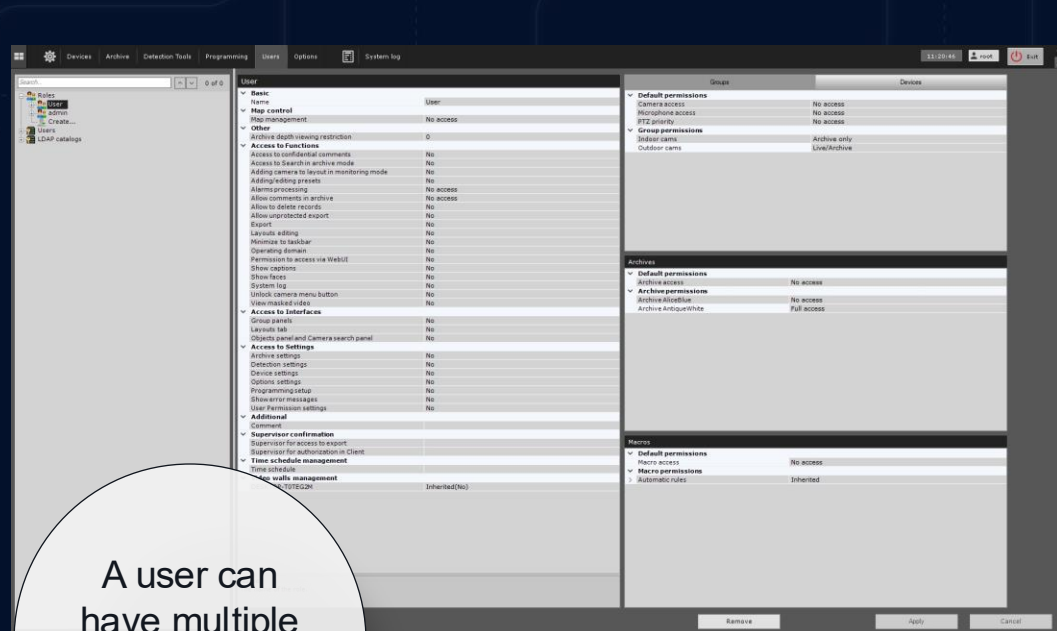


Advanced User Rights Management

SYSTEM
ADMINISTRATION



- **Default rights:** Configure camera access rights for all user roles. When adding a camera to the system, these rights are automatically applied.
- **Camera group rights:** Create groups of cameras and set access rights to all cameras in a group at once. When adding/removing a camera from a group, camera access rights are automatically changed.





LDAP Authentication

SYSTEM
ADMINISTRATION

- Deduplicate user administration tasks for sysadmins at large companies.
- The sysadmin connects an LDAP directory to Axxon One and selects which users to add. They can also associate VMS access rights with corporate directory groups.
- Operators log in to the security system by entering their domain credentials.
- When a user profile is deleted on the LDAP server, it can be automatically deleted in Axxon One.

LDAP settings

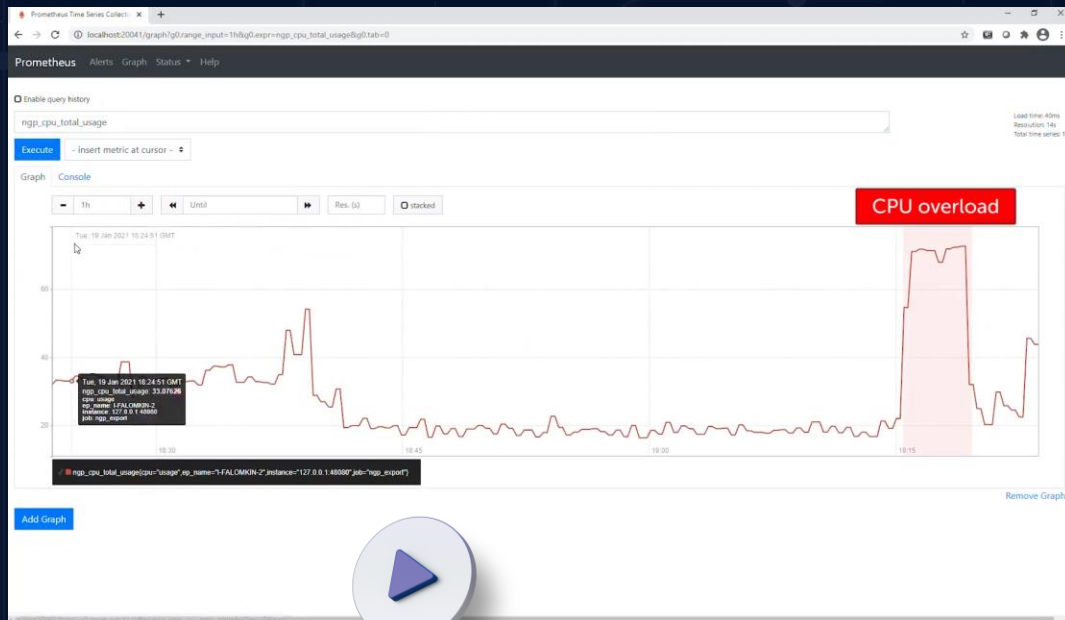
Name:	<input type="text" value="LDAP 1"/>	Port:	<input type="text" value="636"/>
Server name or IP address:	<input type="text" value="ldap.postland.org"/>		
Base DN:	<input type="text" value="ou=Address,dc=axxonsoft,dc=us"/>		
User:	<input type="text" value="uid=your.login,ou=Users,dc=axxonsoft,dc=us"/>		
Password:	<input type="password" value="*****"/>		
	<input checked="" type="checkbox"/> Use secure connection (SSL)		
Search filter:	<input type="text" value="(objectClass=person)"/>		
LDAP templates:	OpenLDAP Microsoft Active Directory		
Username attribute:	<input type="text" value="cn"/>		
DN attribute:	<input type="text" value="entrydn"/>		
Role for automatic registration of user:	<input type="text"/>		
	<input type="button" value="Test connection"/>		



Self-Diagnostics Service

SYSTEM
MAINTENANCE

- Self-diagnostics service collects system operation data:
 - CPU load
 - Memory usage
 - Available disk space
 - Camera FPS, etc.
- This helps address issues by identifying their causes.
- You can specify a script to run in the event of a failure.





Intelligence

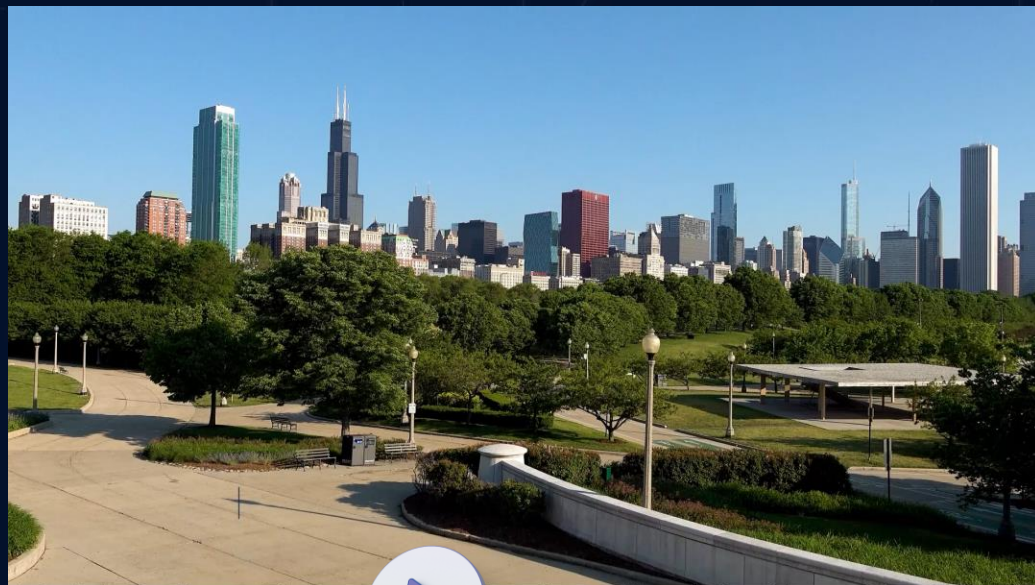
AI video and audio analytics, intelligent search



Meta-Detector

AI VIDEO
ANALYTICS

- Real-time detection of objects or events based on natural language text queries.
- **Query structure:** Specify the object, its key attributes (e.g., size, color), surrounding environment, and scene-specific details like angle or positioning.
- **Examples:** Human and dog, running human, fallen human, woman wearing a black dress, white car at a crosswalk (top view).

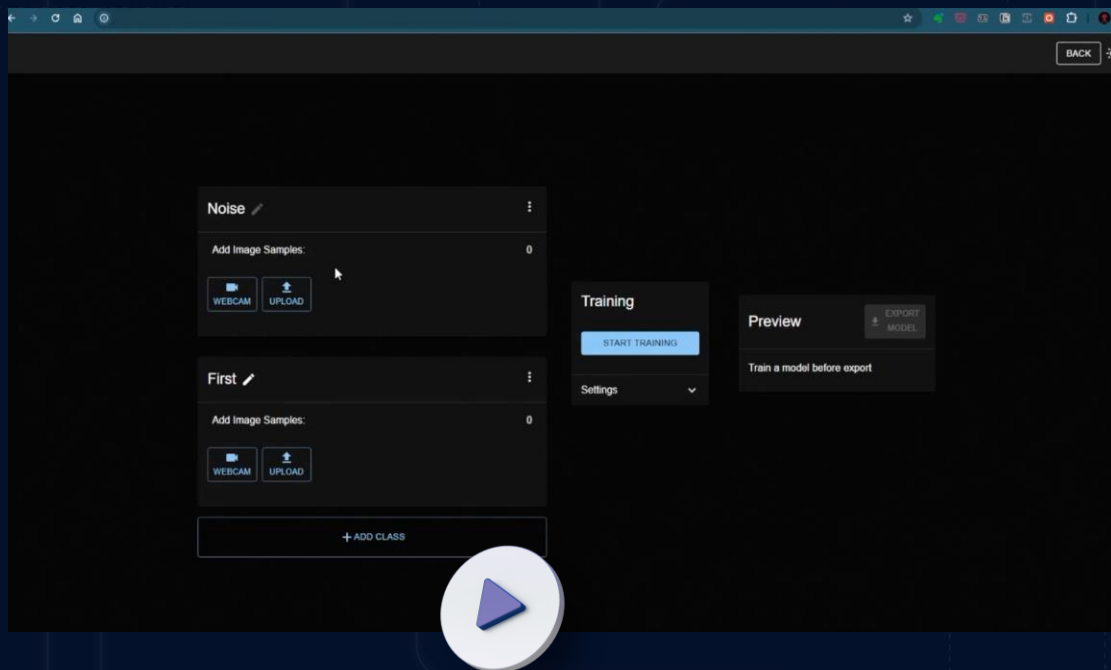




TIY (Train It Yourself) Service

AI VIDEO
ANALYTICS

- Train custom neural networks to detect specific objects.
- Use them with the Object Presence Detector.
- No labeling needed — simply provide up to 5,000 object images and 5,000 background images (min. 224x224 resolution). Capture via webcam or extract from videos.
- TIY is distributed as a Docker image, enabling offline installation on your local computer.

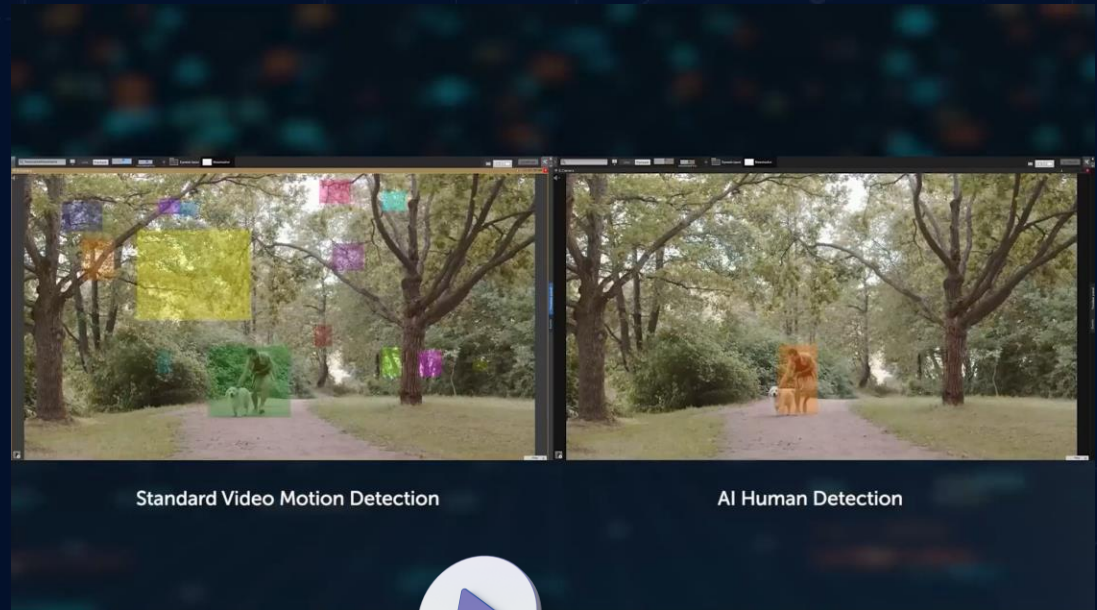




Intelligent VMS

AI VIDEO
ANALYTICS

- Inhouse-designed server-side video analytics, standard and AI-based.
- On-demand development of custom AI analytics for specific security tasks.
- Support for embedded camera analytics: receiving events and “raw” metadata (scene descriptions) for further processing.
- Support for ONVIF profiles designed to work with smart devices (M and T profiles).

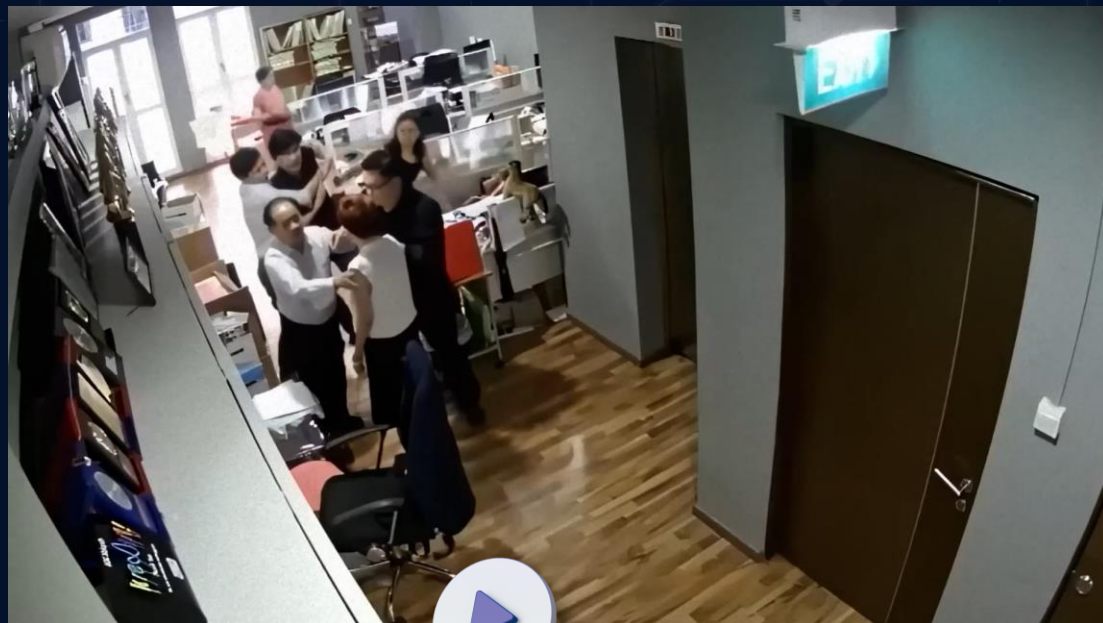




Fight Detection

AI VIDEO
ANALYTICS

The Fight Detector uses AI to identify fights based on visual cues such as raised arms/legs, active limb movements, or prolonged proximity between individuals.

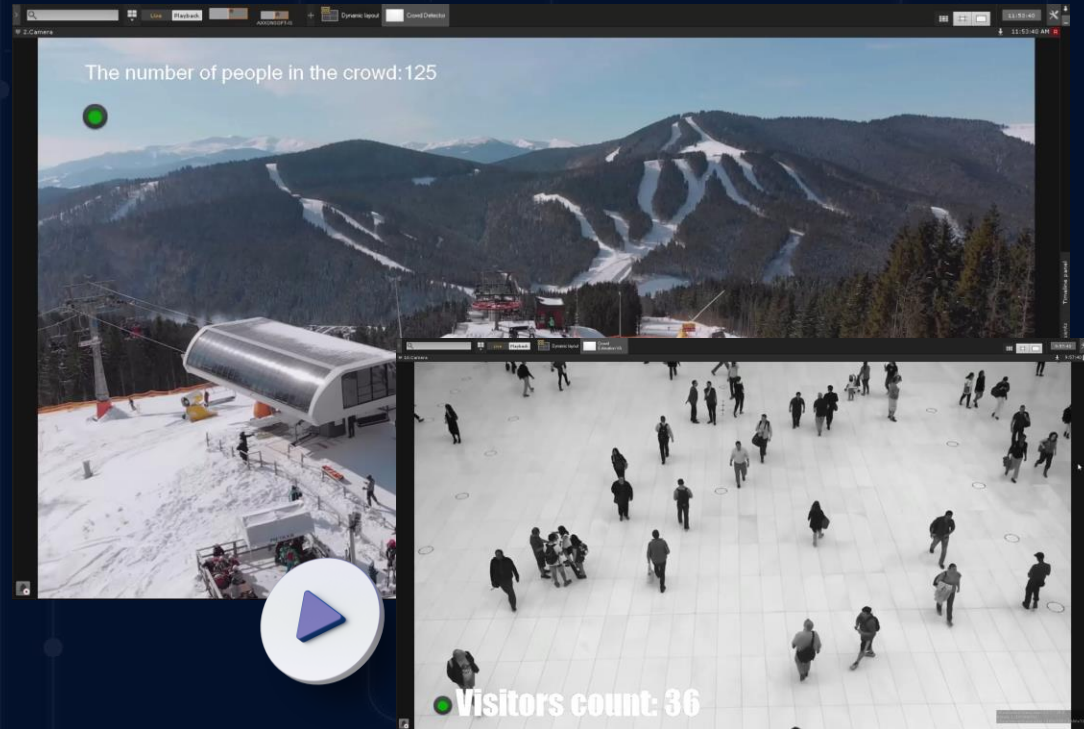




Crowd Estimation

AI ANALYTICS

- Counting people in crowds of 10 to 10,000 people.
- Real-time monitoring of crowd dynamics and alerting security personnel to potential issues before they escalate.

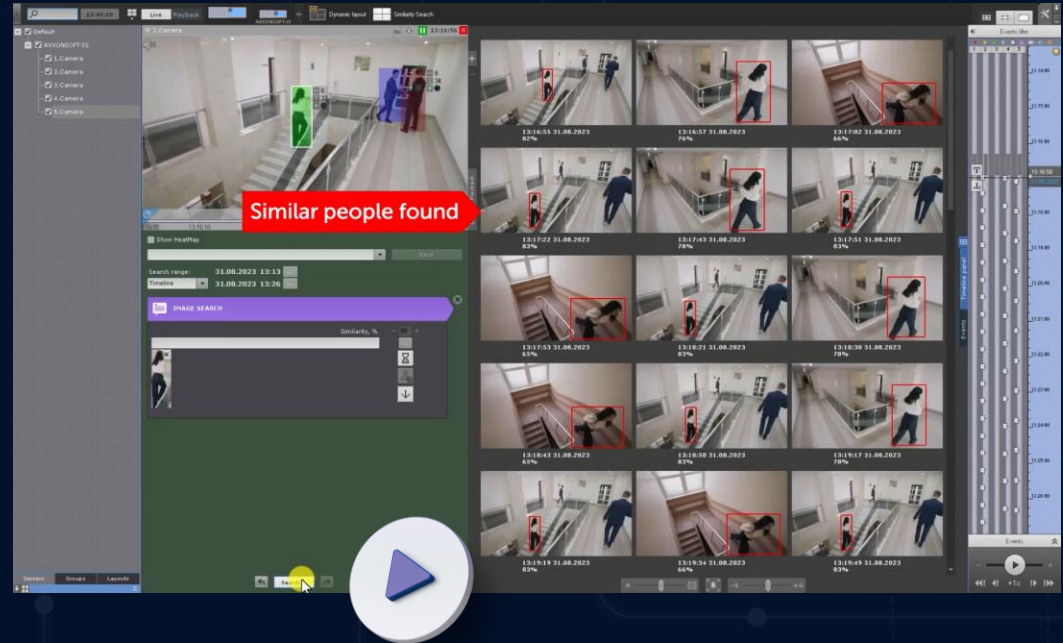




Similarity Search

AI HUMAN
SEARCH

- AI analytics extracts human appearance features and stores them in a database.
- Select a person in the frame or upload a photo to quickly find similar individuals in video footage from multiple cameras.

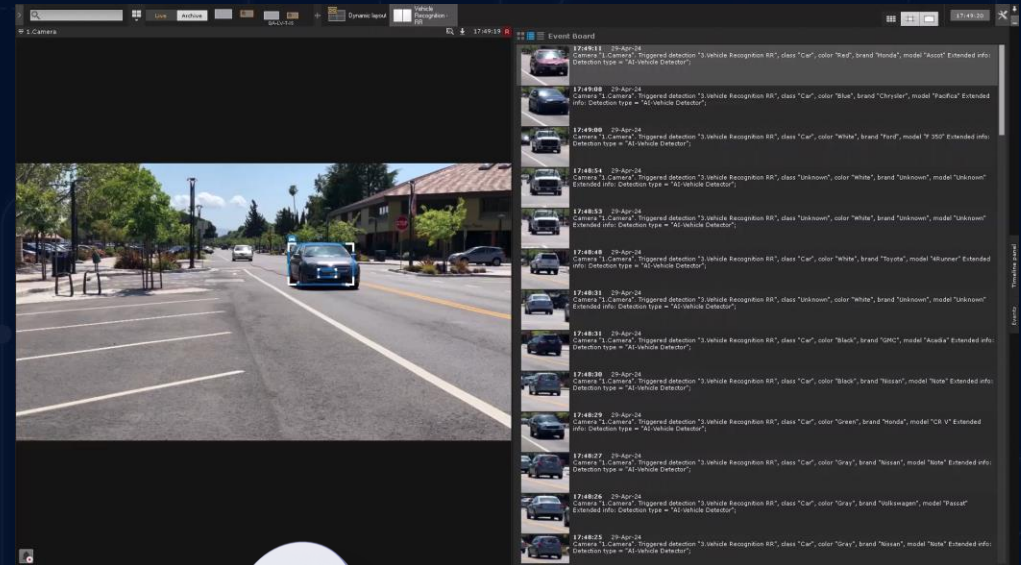




License Plate Recognition

AI ANALYTICS
& SEARCH

- Create watchlists and configure automatic scenarios to launch when a match is found.
- For instance, notify the operator when the recognized number is on the negative watchlist, or open the barrier when the number is on the access list.
- You can quickly check a vehicle number, full or partial, against video footage from multiple cameras.

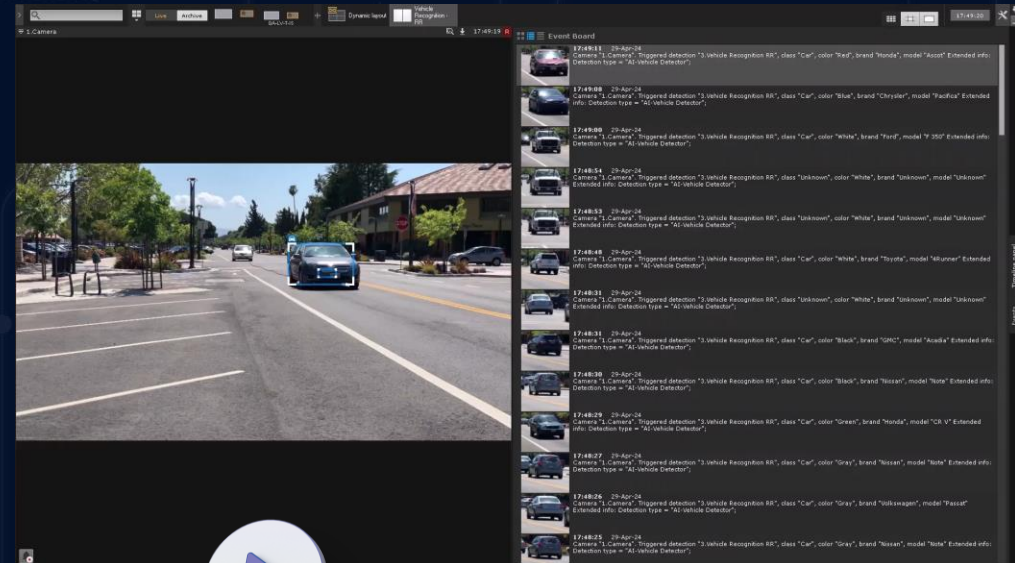




Vehicle Make and Model Recognition

AI ANALYTICS
& SEARCH

- AI identifies the make and model, class, speed, and color of vehicles in a traffic stream in real time.
- You can use all these vehicle attributes to find a vehicle of interest in recorded video from multiple cameras.





Smart Event Search

MULTI-CRITERIA
SEARCH

- Smart Event Search analyzes live video and stores object tracking metadata.
- To retrieve recorded footage of an event of interest, just enter specific criteria: motion in area(s), crossing of a line, object color and size, etc. Within seconds, the system displays thumbnails of relevant video episodes.
- Save a search query for later use on any camera.

The screenshot displays the Axxon One 2.0 software interface. The main window shows a live video feed of a parking lot with several cars. Below the video, there is a search interface with the following fields:

- Search range: 6/21/2023 11:40 PM
- Criteria: 6/21/2023 4:46 PM
- Selected criteria: MOTION IN AREA
- Metadata source
- Minimum size
- Maximum size
- Color
- Object type
- Enter/Exit
- Minimum
- Maximum speed
- Minimum speed

On the right side, there is a grid of six video thumbnails showing different time points from the search results. A large play button icon is overlaid on the bottom right of the interface. A timeline on the far right shows the search results as a series of green dots.



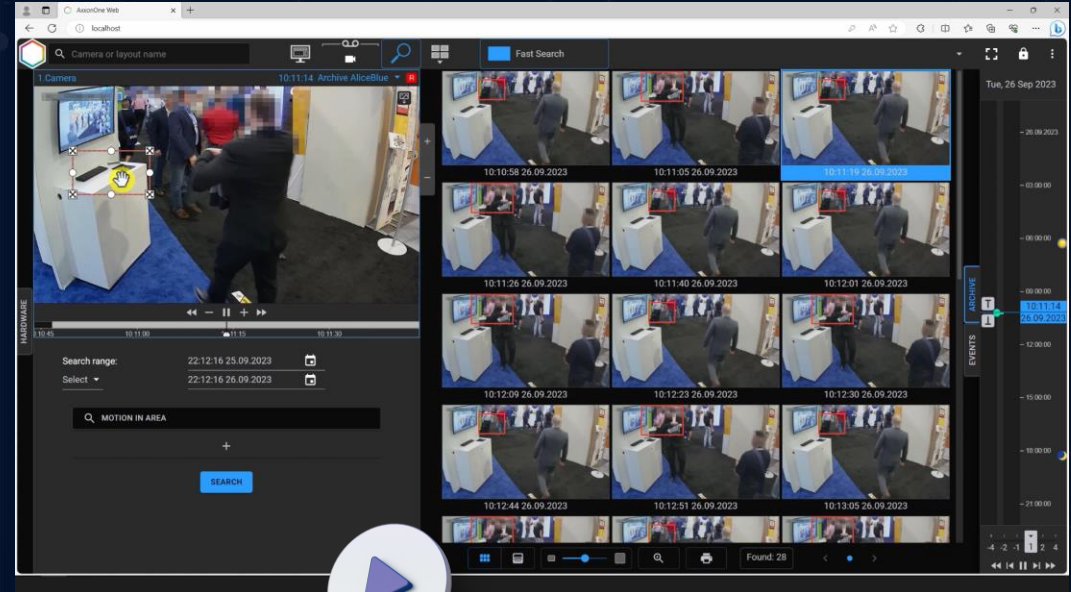
Instant Event Search

MOTION-BASED
QUICK SEARCH

- Specify an area within the frame and quickly find all episodes where motion occurred in this area.
- Quickly switch from viewing video to searching.



A powerful and convenient tool that doesn't require complex settings

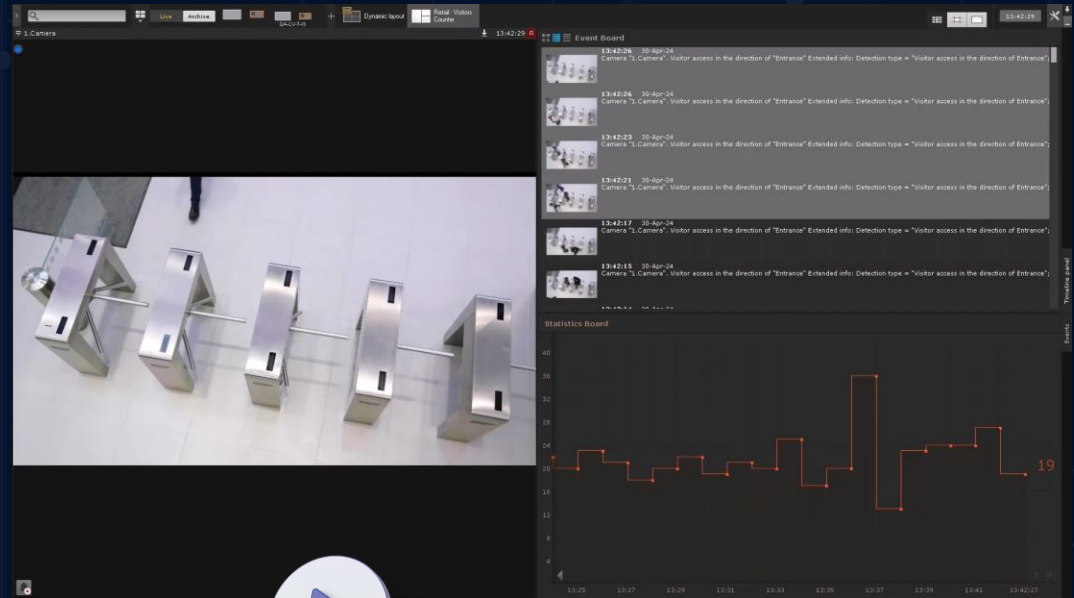




Visitor Counter

RETAIL
ANALYTICS

- This tool counts visitors entering or exiting the premises, such as a store or a specific area of the salesfloor.
- The information collected may be used, along with sales data, to estimate your sales conversion rate and/or for market research.

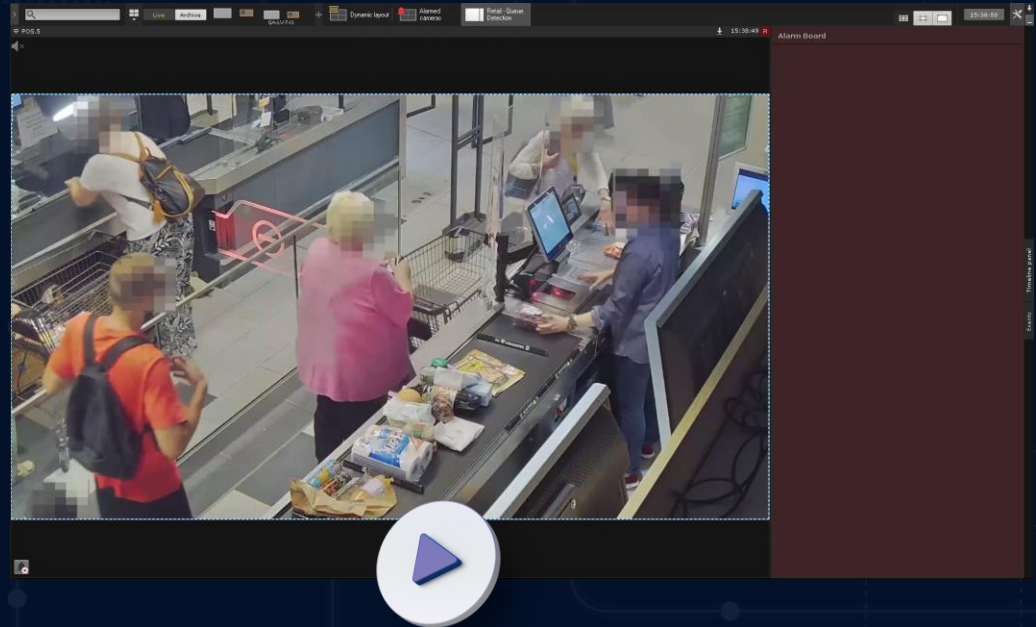




Queue Detection

RETAIL
ANALYTICS

- The tool detects the number of people in queuing areas and alerts when the specified value is exceeded.
- Knowing actual customer numbers empowers you to manage human resources in both the short and long term.





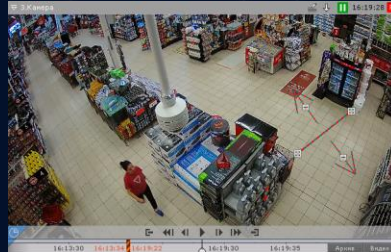
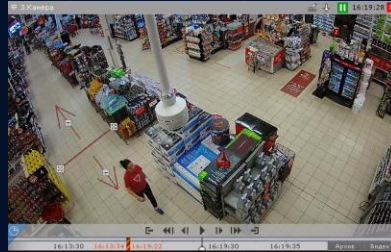
Motion Heat Map

ACTIVITY
MAPPING

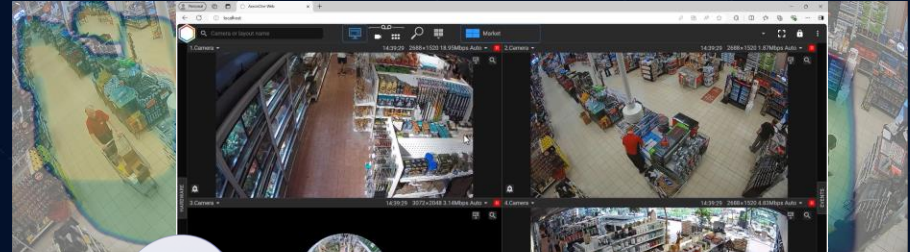
A heat map is a graphic representation of visitor activity in different areas based on visitor numbers or time spent.

The heat map can be generated from tracking data for all objects or objects specified with Smart Event Search criteria.

Query



Visitor numbers



Time spent



axxonsoft

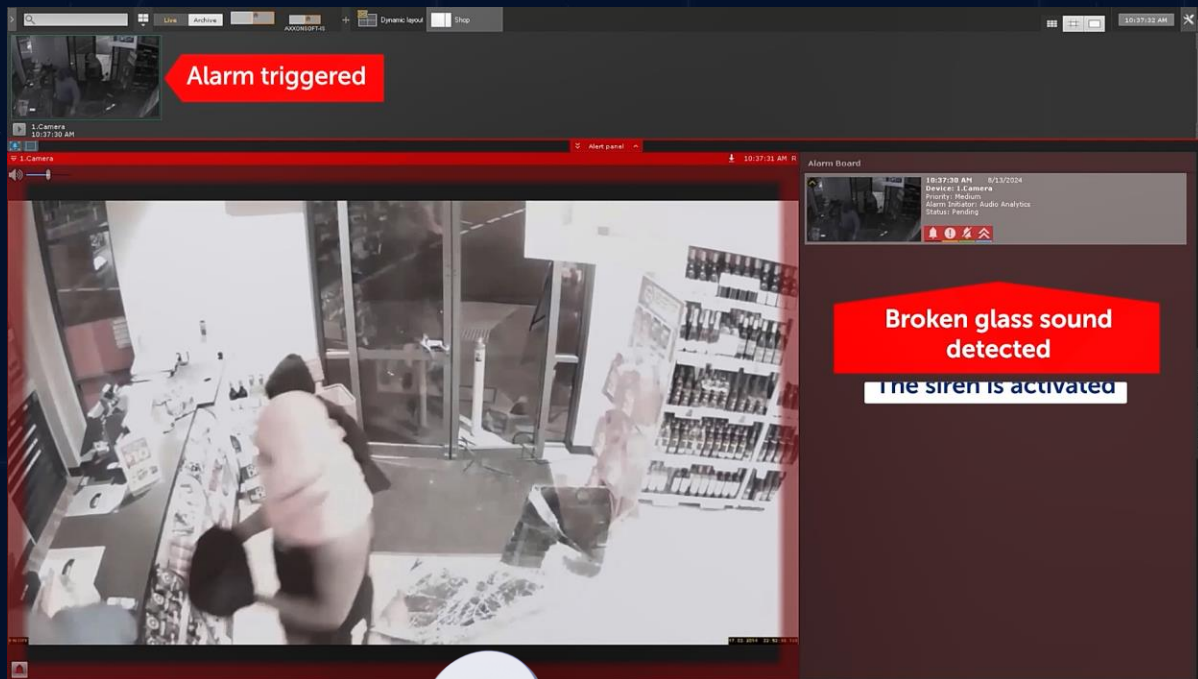


AI Audio Analytics

AUDIO
DETECTION

- Gunshot
- Glass breaking
- Siren
- Dog barking
- Baby crying
- Aggression, and more

A powerful and accurate set of audio analytics tools based on deep learning algorithms that can recognize a wide range of sounds.





Intel® Distribution of OpenVINO™ Toolkit

RESOURCE
OPTIMIZATION

OpenVINO™ toolkit extends Axxon One AI video analytics workloads across Intel® hardware (including accelerators) and maximizes performance.

According to our tests, the latest OpenVINO™ version provides up to 1.5x performance of Axxon One AI video analytics running on CPU.



intel.
partner

IoT Video
Specialist



Unification

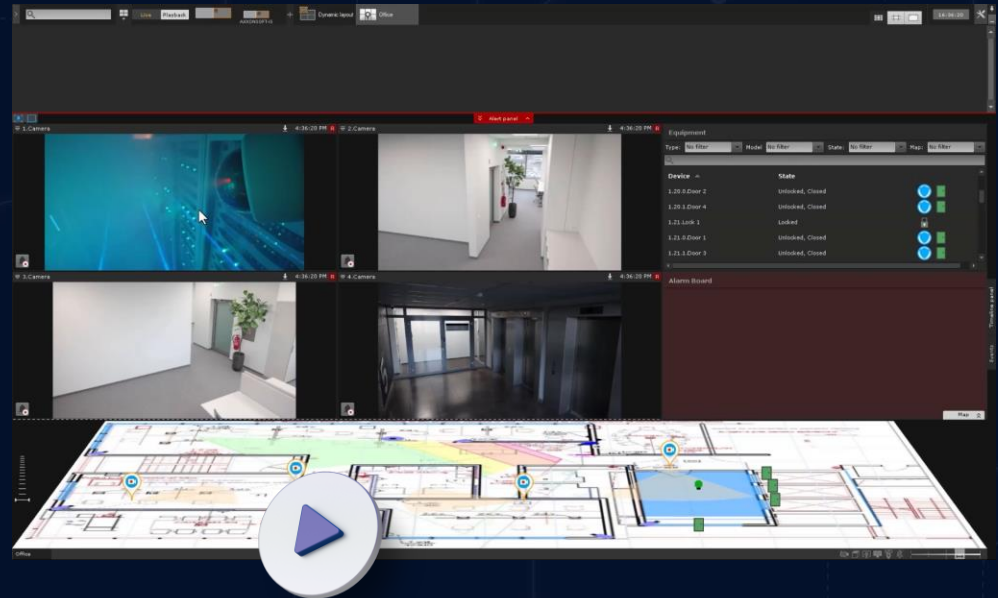
Integration and automation



Integration with Access Control Systems, Fire & Intruder Alarms, Perimeter Security Systems

INTEGRATION
& AUTOMATION

- Unified interface for security equipment from different manufacturers.
- Read the configuration from the hardware and automatically add devices to Axxon One.
- Link camera videos to events occurring in the integrated systems.
- Configure systems interaction, run automatic scenarios on events.
- Show events and device statuses on the map and dedicated panels.
- Control devices using the map and the equipment board.





Customizable Event-Response Scenarios

AUTOMATION

- Configure a complex system response to any specified set of events.
- Use IF...THEN logic to create a macro that automatically performs an unlimited number of actions in Axxon One.
- Automate the interaction of multiple integrated systems.

The screenshot displays the Axxon One automation configuration interface. On the left, a configuration window is open, showing the following settings:

- Start conditions:** Default: 7 Cameras: One detected: Triggering event.
- Play audio on server:** Audio file: "mp3", "wav", "m4a", "aac".
- Send e-mail:** Mail message: "AXXON ONE 2.0 alarm event".

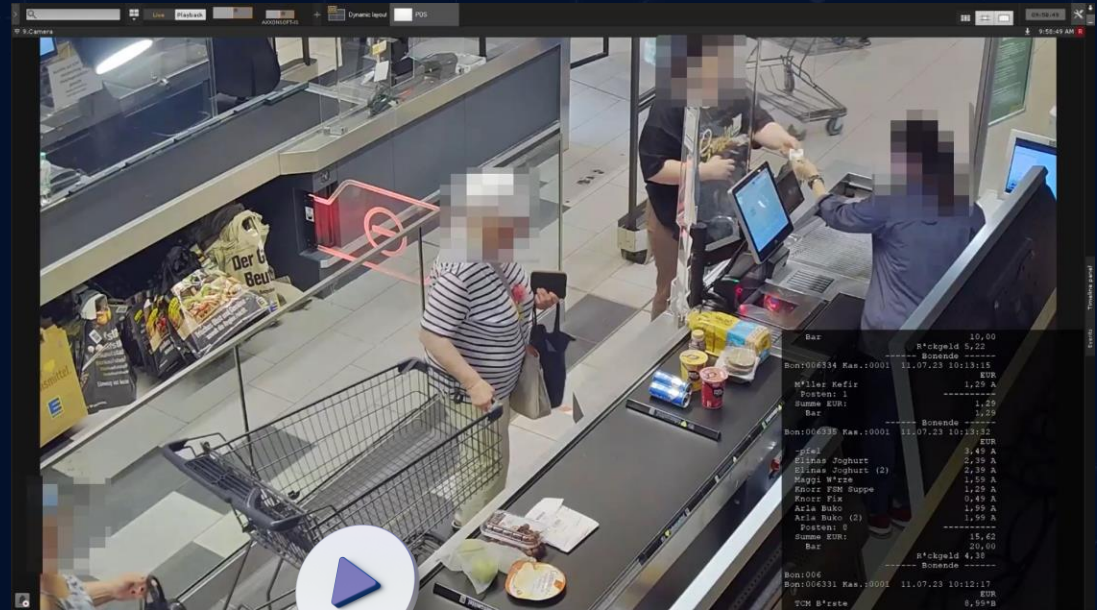
On the right, a flowchart visualizes the logic: **IF** (connected to 'ALARM TRIGGERED') leads to **THEN** (connected to 'PLAY AUDIO'), which leads to 'STOP PLAYING AFTER 10 SEC', and finally to **AND** (connected to 'SEND E-MAIL'). A large play button icon is overlaid at the bottom center of the interface.



Cash Register Integration

POS
SUPERVISION

- Link POS transaction data to video footage.
- Receipt text is superimposed on video as titles and stored in a database.
- View video with titles in real time.
- Search for recorded video by title texts and display video footage with titles.
- Obtain various reports based on POS transaction data.

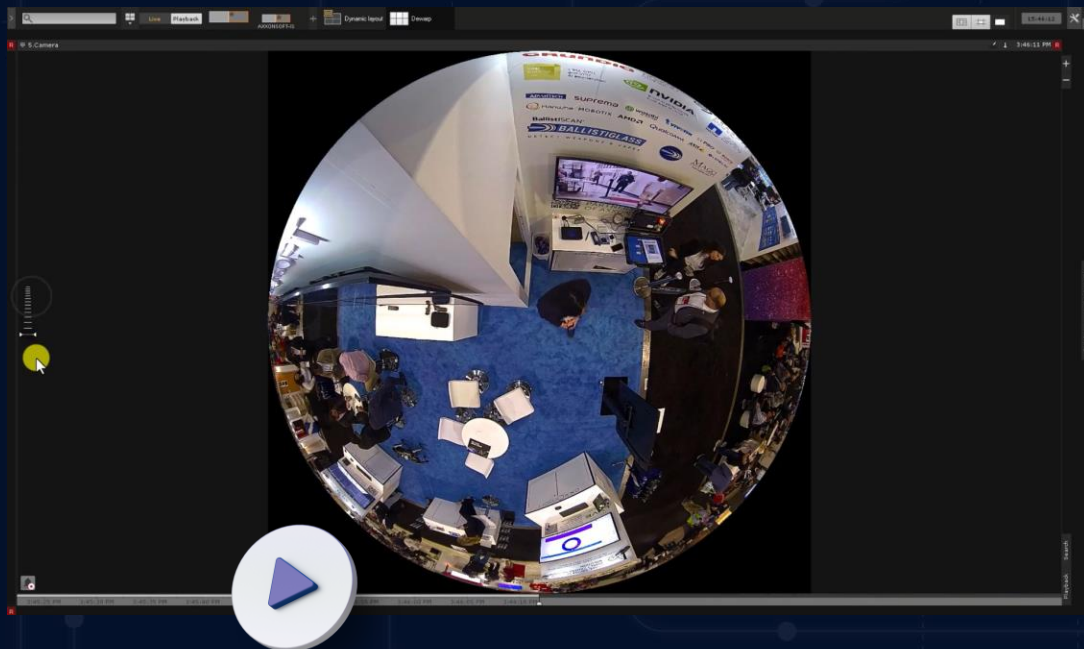




IP Device Integration

EXTENSIVE LIST

- 10,000+ IP devices: cameras, thermal imagers, NVRs, etc.
- ONVIF Profile S, G, T, M.
- Generic drivers from multiple vendors.
- Camera configuration in Axxon One.
- Support for embedded video analytics.
- Support for edge storage.
- Fisheye camera support, with image dewarping on GPU.





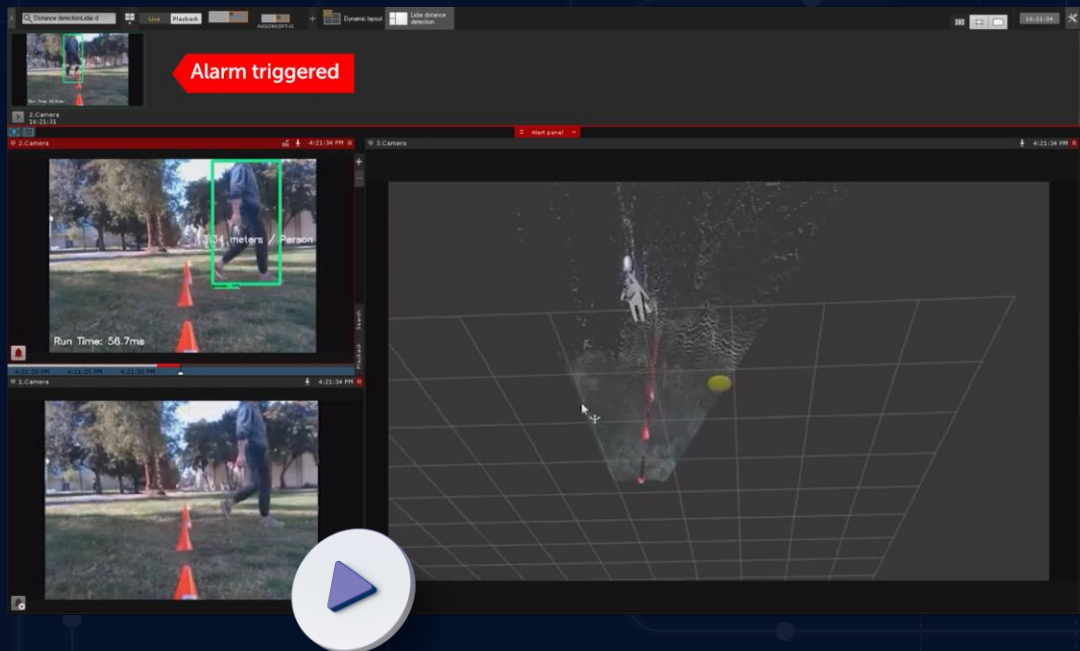
LiDAR Camera L515 Integration

IP DEVICE
INTEGRATION

- Precise volumetric measurements of objects.
- Quickly gauge complex objects.
- Objects don't bleed into the background or each other.
- Fast scanning of moving objects up to 9 meters with no blurring.

Initiate various scenarios in Axxon One based on LiDAR distance detection, including:

- Notification in desktop client.
- Audio alarm.
- iOS/Android push notifications.
- Email notifications.



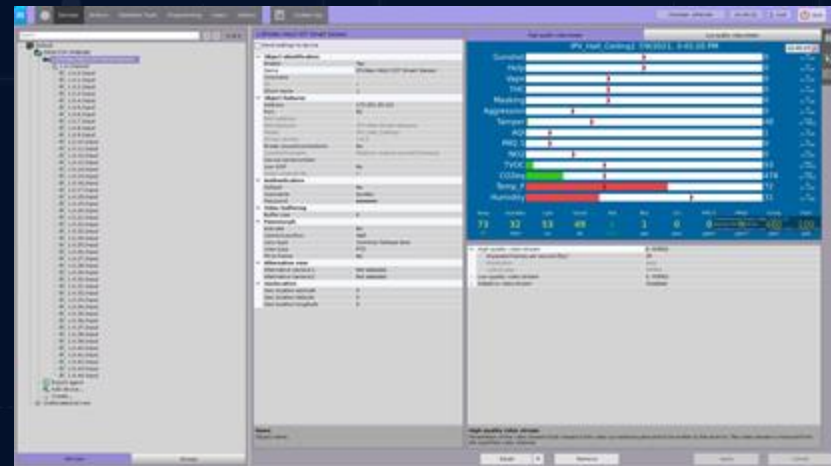


HALO Smart Sensor Integration

VAPE
DETECTION



- Monitor the air quality for any abnormal compounds emitted from vaping devices (including THS oils).
- Detect intentional vape masking behavior by using aerosols to cover it up.
- Alert faculty when and where students vape on school grounds and trigger recording to get video evidence.
- HALO Smart Sensor has 38 different types of sensors (temperature, humidity, CO, gunshot, etc.) to capture comprehensive health, safety, and vaping awareness.
- Axxon One can trigger alarms upon reaching the pre-configured sensor thresholds and superimpose the current sensor readings on the video in real time.





Video from Mobile Devices

AXXON CAMERA
APPLICATION

- Install the free Axxon Camera app on your Android device and use it as a portable video surveillance camera or a wearable camera.
- Axxon Camera transmits a live video stream from your phone or tablet's built-in camera to the Axxon One server.
- You can record video, display it on the operator's screen, apply video analytics and other features available for conventional surveillance cameras.





Interoperation with External Systems

INTEGRATION
SDK

Use Axxon One as a video management system within a larger information complex:

- Receive events, live and recorded camera video, and other data from the Axxon One system.
- Obtain technical and statistical data about servers, cameras, and video footage.
- Remotely run macros, export video, and control PTZ cameras.
- Remotely control the display of information in the desktop and web clients.
- Automate the configuration of large-scale Axxon One systems.





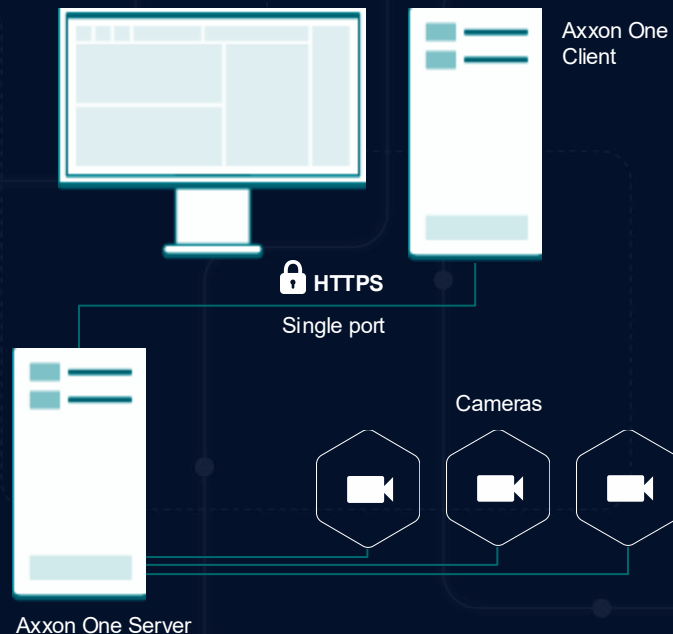
Cybersecurity & Data Privacy



Secure Client-Server Connections

CYBERSECURITY

- The client connects to the server through a single port using the secure HTTPS protocol.
- All transmitted data is encrypted with the current version of TLS.

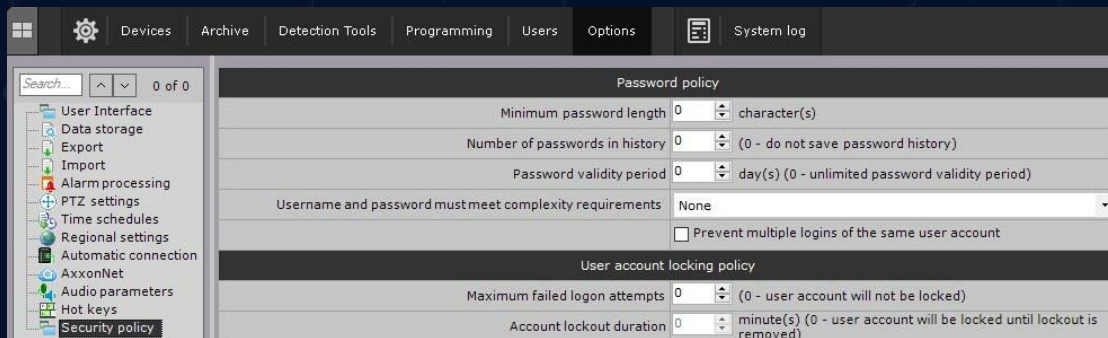




Security Policy

CYBERSECURITY

- Configure the minimum password length, password expiration, number of passwords in history, and account lockout time/number of failed login attempts.
- Apply password strength control.
- Prevent multiple concurrent sessions from the same user.
- Specify a range of permitted IP addresses for client computers.
- Set up administrator-authenticated access to the server.



Forced
change of
default
password is
required at first
login

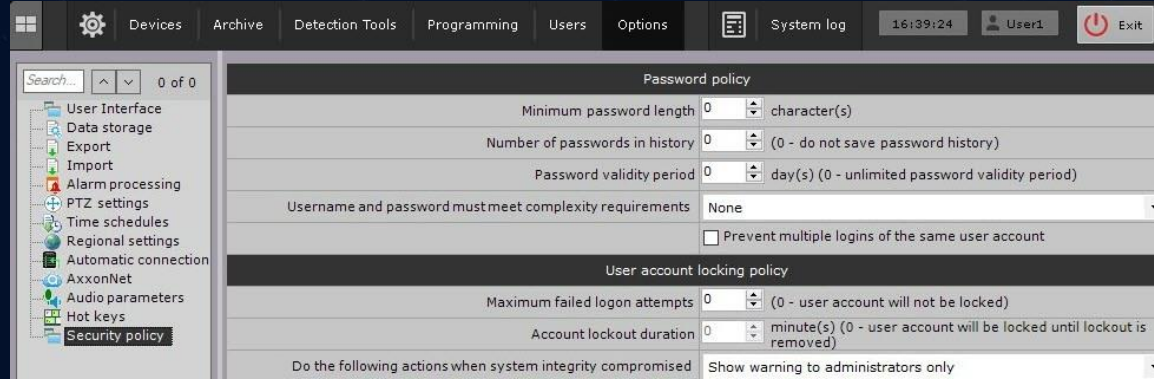




System Integrity Check

CYBERSECURITY

- All executable files are automatically scanned at server/client startup.
- If the test fails, an alert to administrators and other specified actions are performed: show warning to all users, block all users without administrator rights, stop non-vital services.



Prevent
unauthorized
interference
with your
VMS



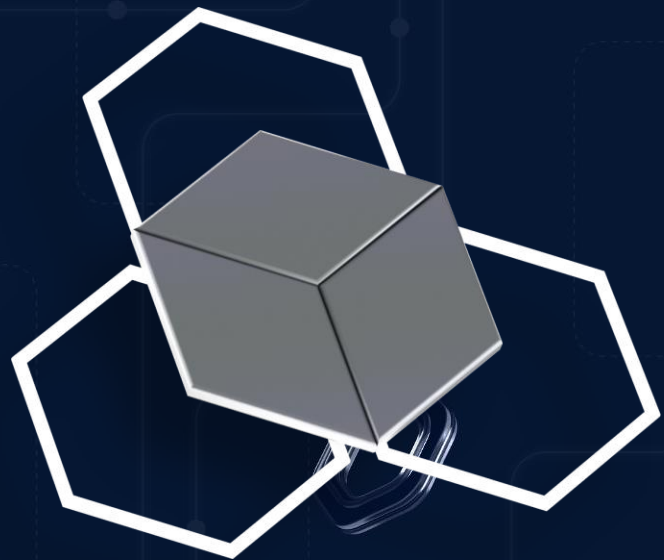


Privacy Masking

DATA PRIVACY

- Manually mask any static or moving objects in recorded video.
- Hide faces using the face detection tool.
- Mask all moving objects in the camera's FOV using an intelligent, resource-optimized algorithm.
- Apply AI detection to mask only specific objects (such as people), moving and static.





Usability

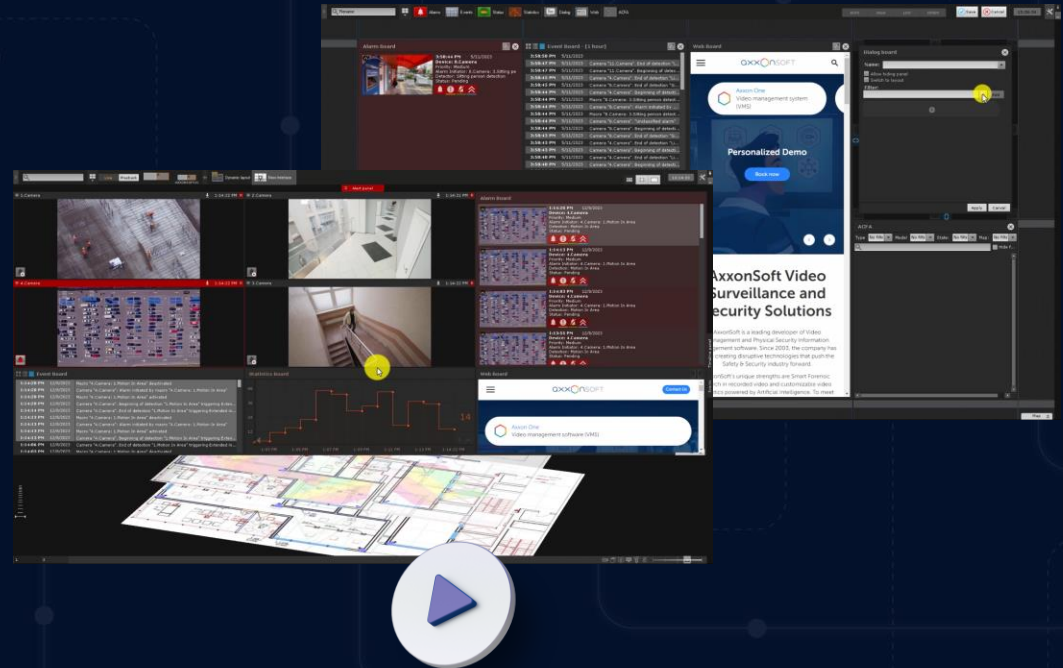
Live monitoring and video investigation



Streamlined User Interface

USABILITY

- Quickly customize your camera layouts, pinpoint camera locations on geo-maps, handle alarms, export videos, and combine various useful information into one convenient view.
- Monitor system health, review events and statistics, control security devices, view web pages, and more.

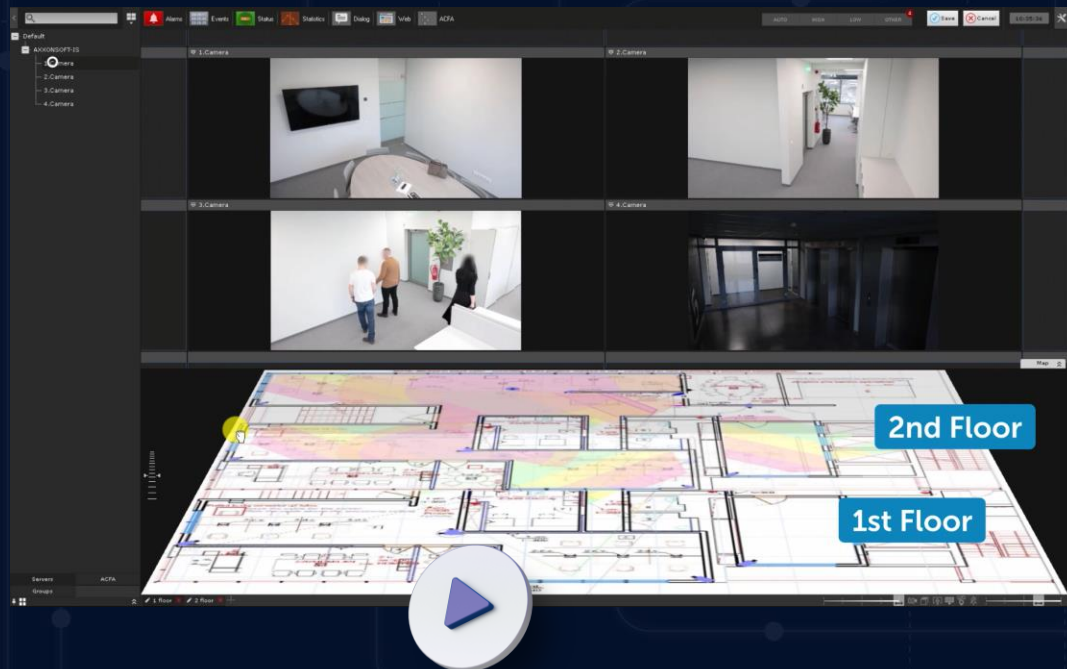




Multi-Level Interactive Map

3D MAP

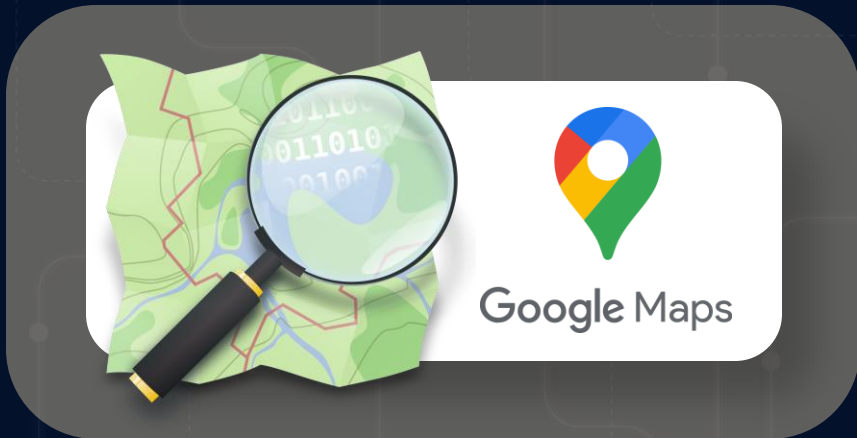
- Multi-level interactive 3D map is a convenient tool for monitoring various sites, including multistory buildings.
- It superimposes camera locations on a site map and displays camera views in the same window.
- You can instantly pinpoint where a selected camera is located and quickly switch between different floors' views.



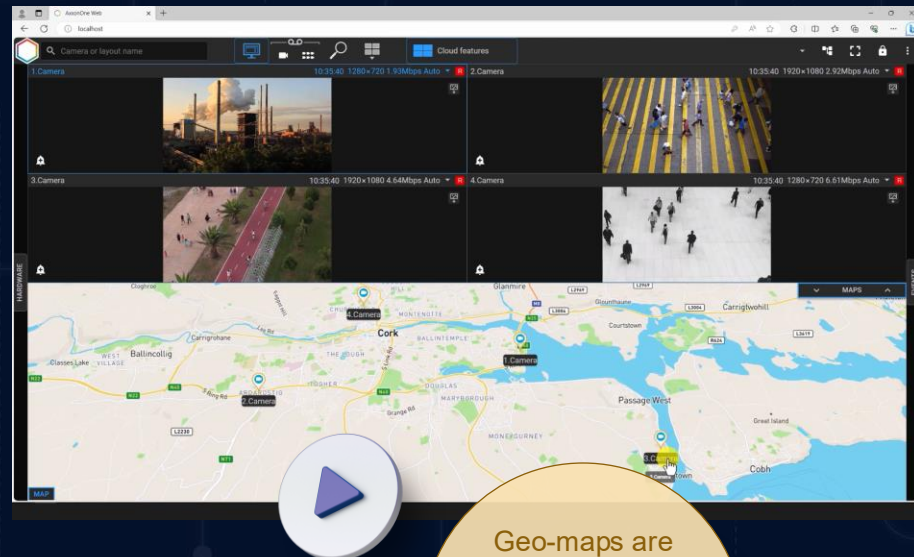


OpenStreetMap and Google Maps

GEO-MAPS



- Interactive 3D map supports bitmap and vector geo-maps.
- Select a geo-map provider: OpenStreetMap or Google Maps.
- Geo-maps are especially useful for large and distributed systems.



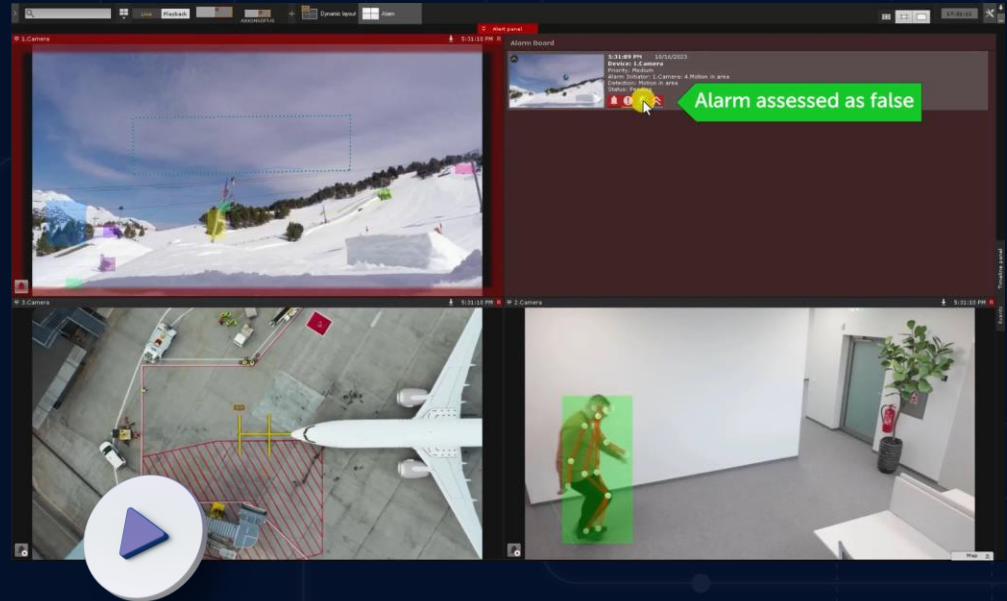
Geo-maps are updated by their providers, so you always have an up-to-date map of your site



Alarm Handling

ALARM BOARD

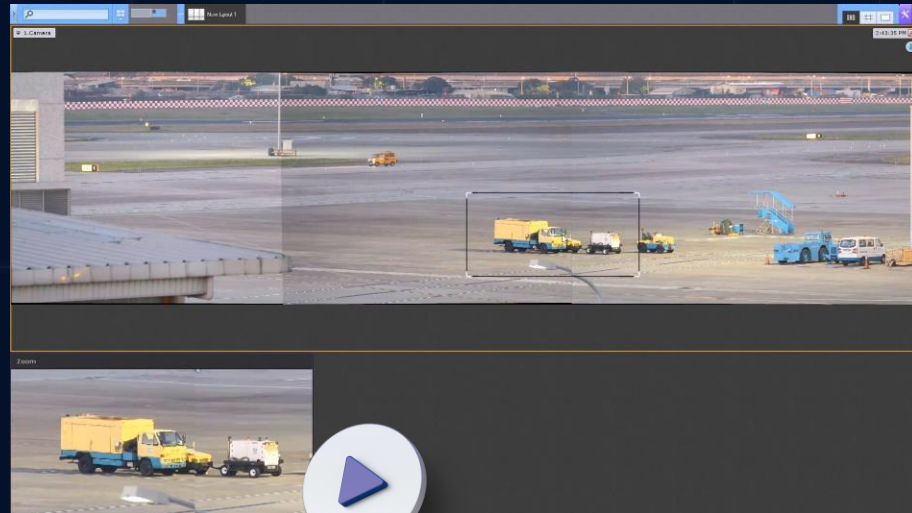
- Alarm Board in the desktop client shows active alarms in order of priority.
- View event recordings and assess alarms as confirmed, suspicious, or false.
- Escalate alarms to the users in specified roles, with the possibility of priority change.
- Assessed alarms are color-coded on the video archive timeline and can be filtered by their status.





FrameMerge

PANORAMIC
VIEW



Effective
control over
extended
areas

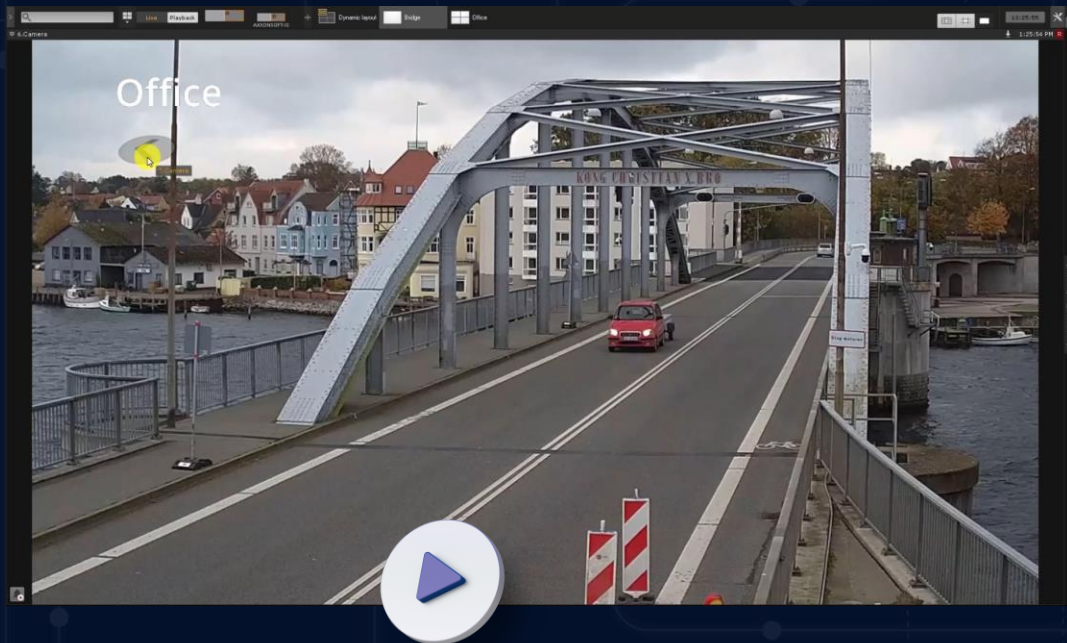
- Combine a panoramic view from up to 3 camera feeds.
- View the resulting video in live or archive mode.
- Export panoramic videos to standard .avi or .mkv files.
- Select and zoom into any part of the panoramic image.



Links Between Cameras

QUICK CAMERA SWITCHING

- Include links to other cameras in a camera window.
- Clicking a link brings you to the linked camera.
- This function facilitates object tracking across different cameras' FOVs.

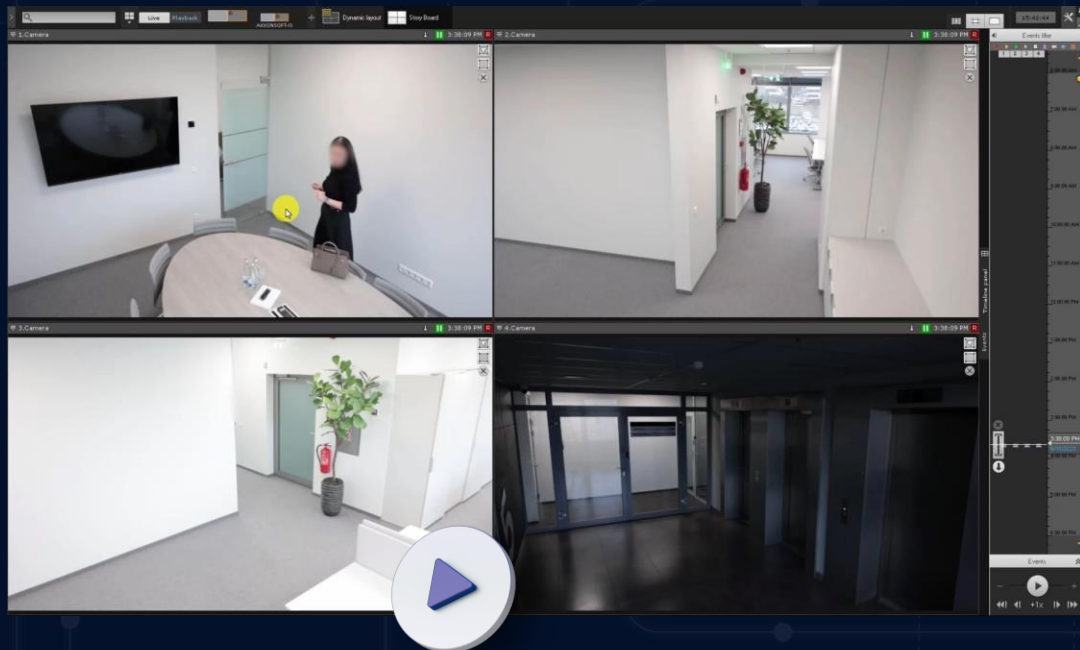




Story Board

VIDEO EVIDENCE
RETRIEVAL

- Select video episodes containing an object of interest and recorded by different cameras, then export these episodes to a single video file.
- Quickly retrieve the required video material and send it to relevant agencies/staff.

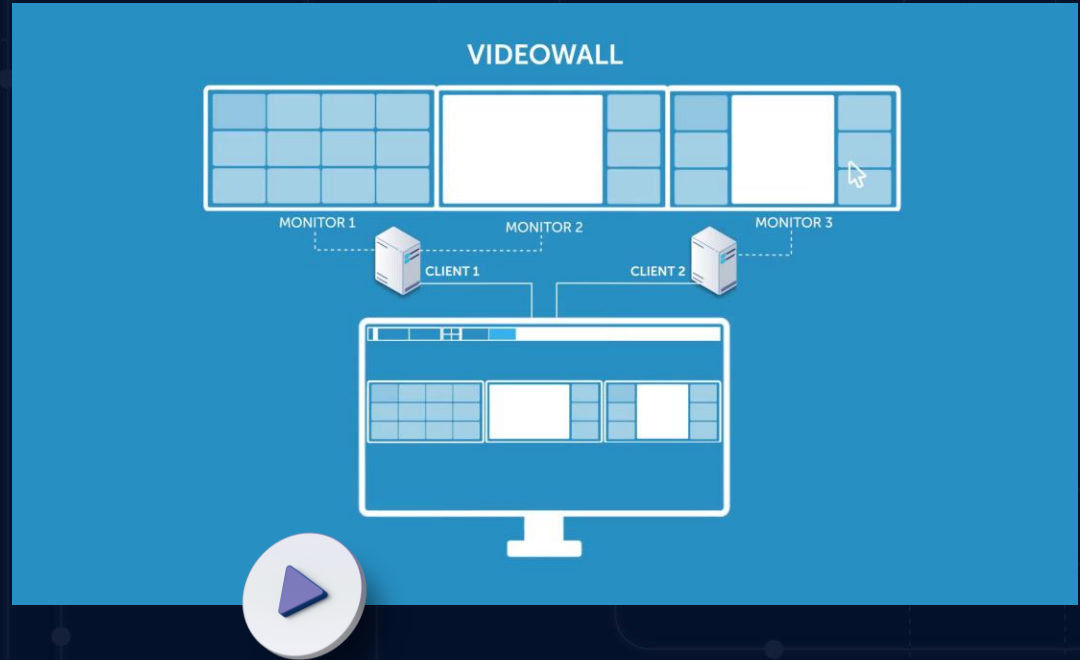




Video Wall Management

MONITORING
HUBS

- Designate a client computer or several computers as a video wall.
- Configure multi-computer and multi-monitor video walls with ease.
- Manage the video wall from any client workstation.





Client-Side GPU Acceleration

RESOURCE
OPTIMIZATION

- Hardware video decoding on NVIDIA graphics cards or using Intel® Quick Sync Video technology.
- Smooth playback of dozens of Full HD videos.
- Reduced client CPU load, especially when decoding H.265 video feeds.
- You can use client computers with lower CPU performance specs.
- Build large video walls based on just a few client computers.





Web & Cloud

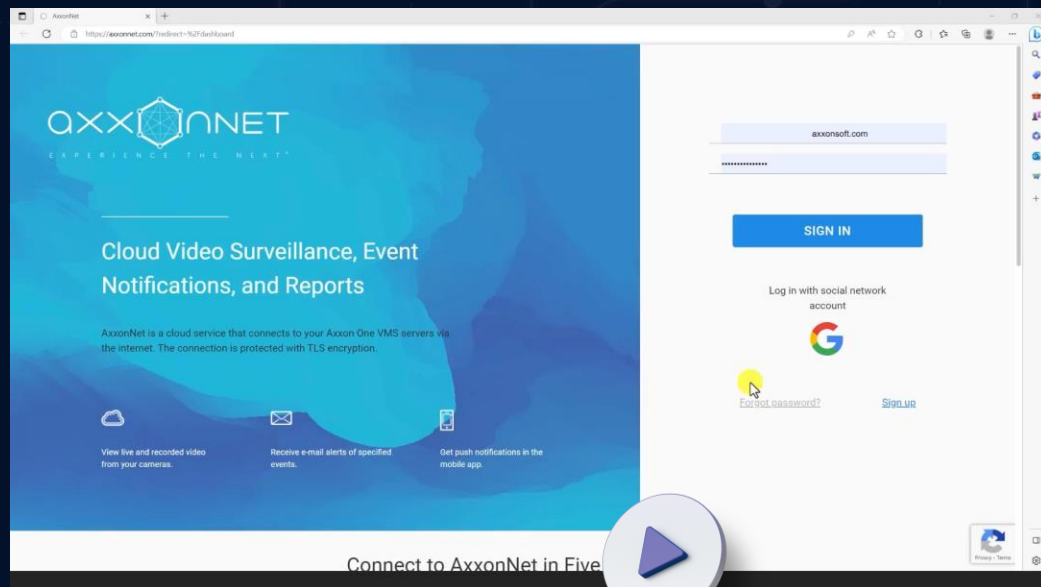
Secure remote access and centralized reporting



AxxonNet Cloud Service

PUBLIC CLOUD

- Connect to remote on-premises systems using web and mobile clients.
- View live and recorded video.
- Configure and view reports.
- Send reports by email on schedule.
- Receive email notifications on specified events and view linked videos stored in the cloud.
- Send push notifications on certain events to mobile clients.
- Centrally manage license plate watchlists.

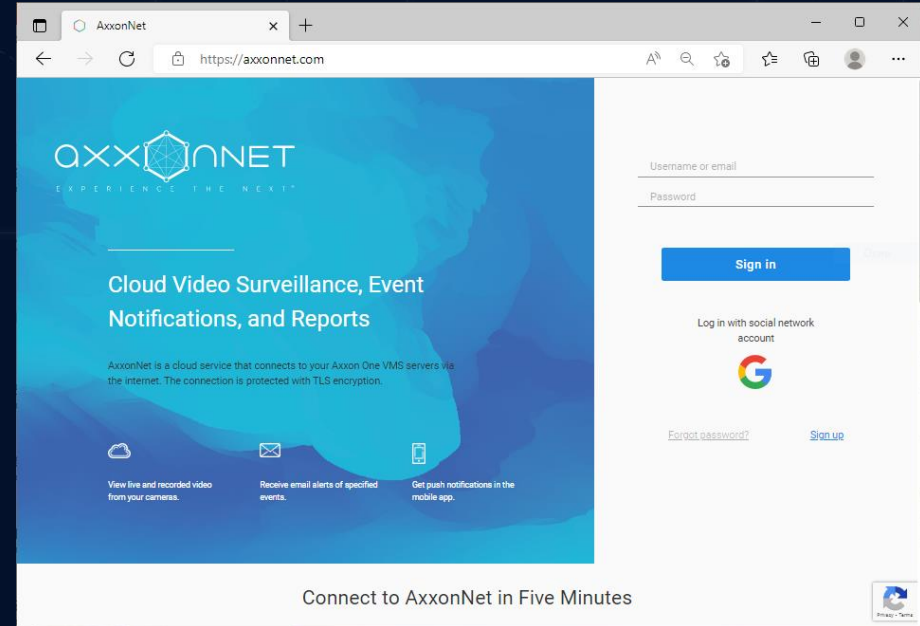




AxonNet Cybersecurity

CLOUD
CYBERSECURITY

- Secure connection via HTTPS.
- Bearer authentication.
- Two-factor authentication.
- User password hashing.
- Password expiry and password history.
- Password strength control.
- reCAPTCHA v3 on the login screen.
- Setting the lockout time/number of failed login attempts.
- Auto logout after a set period of inactivity.
- Inactive account locking after a set period, with reactivation by email.

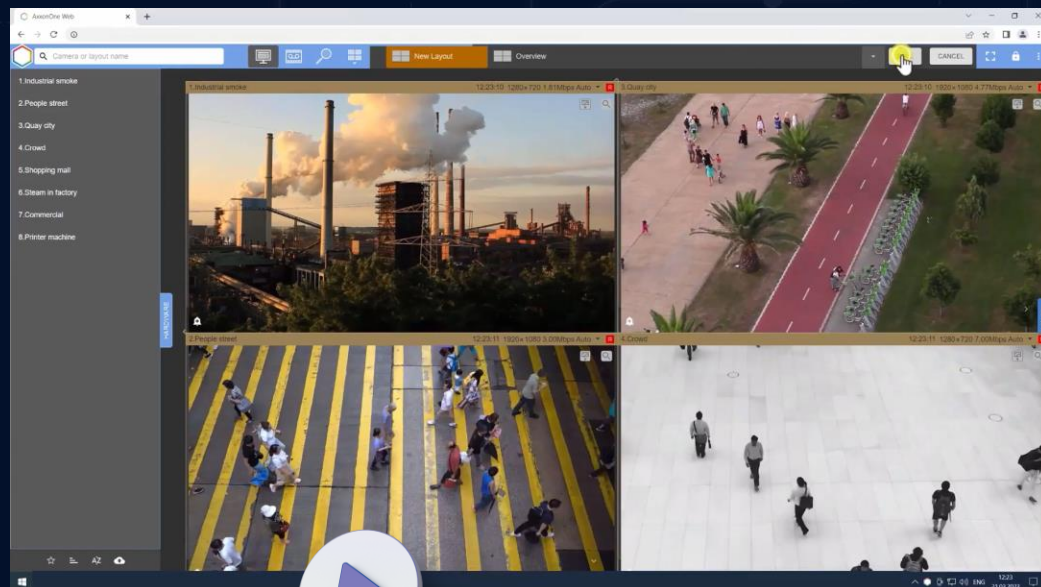




Web Client

FEATURE-RICH
WEB INTERFACE

- Configure various layouts.
- Search recorded video by license plates, events, Smart Event Search criteria, and time intervals (time slicing).
- View alarm events and motion heat maps.
- Work with bookmarks.
- Control PTZ cameras, work with fisheye cameras.
- Apply digital zoom.
- Export still frames and videos.
- View camera and video archive statistics.

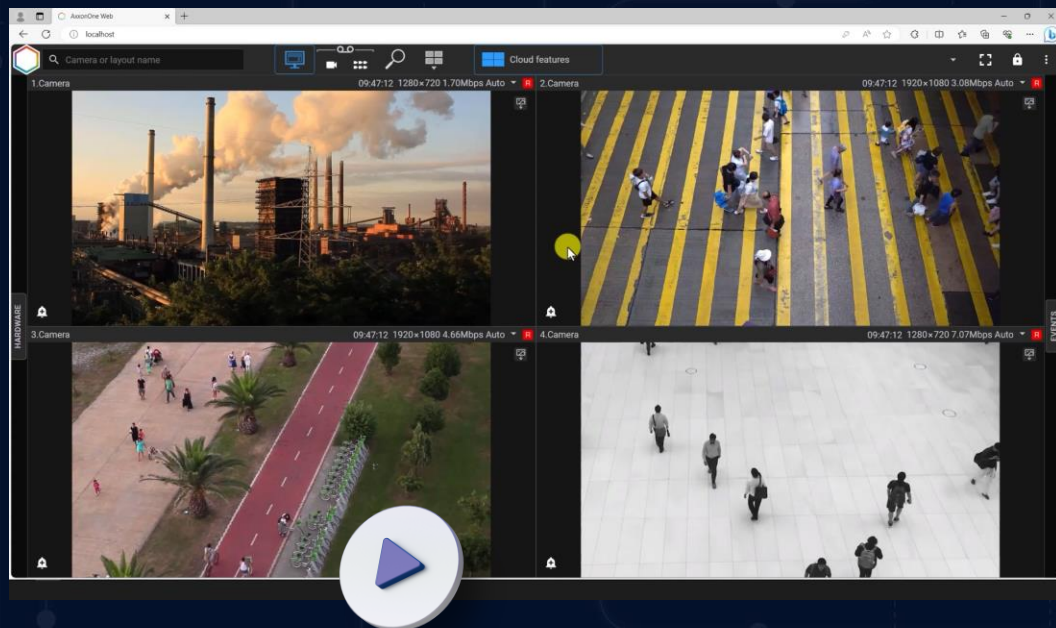




Archive Layouts and H.265 in Web Client

EFFICIENT
MONITORING

- Watch live or recorded video from multiple cameras simultaneously.
- H.265 video decoding on GPU in the Edge and Chrome browsers reduces the client computer CPU load.

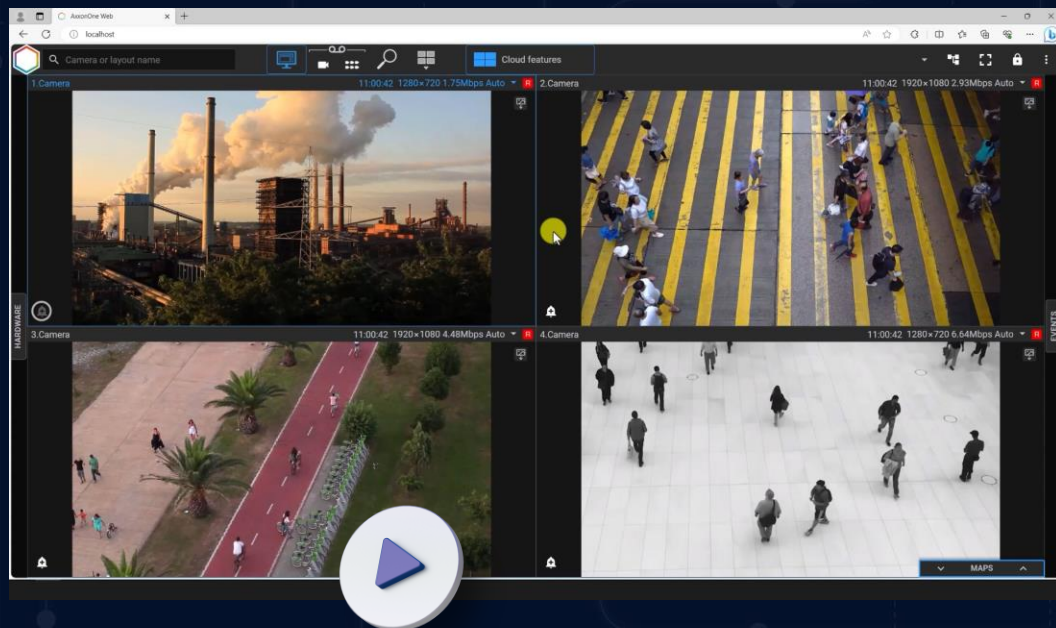




Alarm Handling in Web Client

ALARM PANEL

- Alarm Panel shows all active alarms at a site.
- Click an alarm thumbnail to view the event recording and assess the alarm as confirmed, suspicious, or false.
- Assessed alarms are color-coded on the video archive timeline and can be filtered by their status.

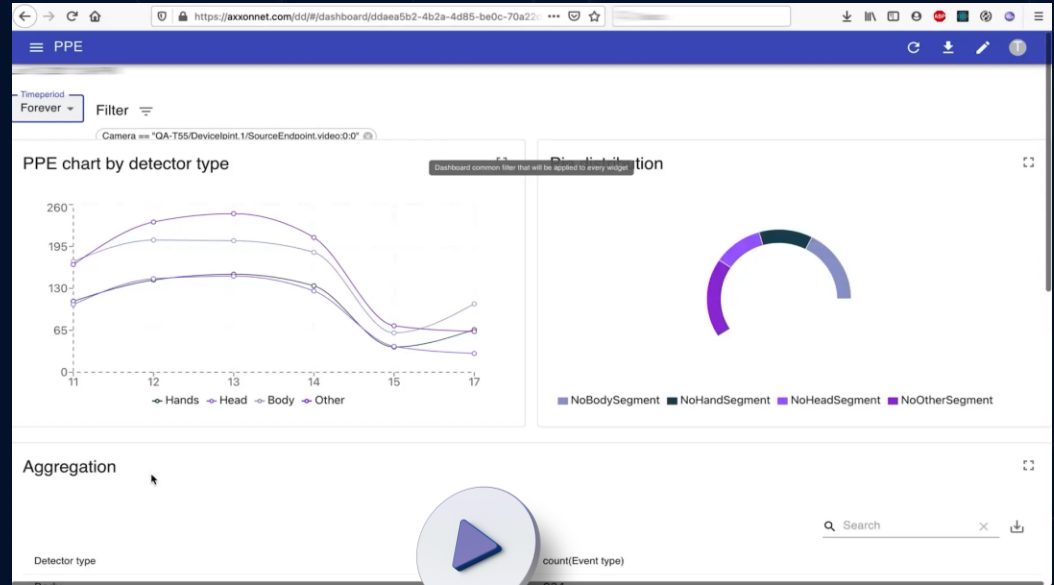




Reports and Dashboards

CUSTOM
REPORTING

- Flexibly configurable reports can be based on video analytics data, POS transaction data, and various Axxon One events.
- You can create dashboards containing custom reports and other widgets for data representation.
- With dashboards, it's easy to visualize, analyze, and share information with other users of the security system.





Object Storage

VIDEO STORAGE
SCALABILITY

- Axxon One supports cloud object storage services: Microsoft Azure Storage, Amazon S3, Seagate Lyve Cloud.
- Store in the cloud video footage from on-premises and cloud-based Axxon One servers.
- Quickly scale your video storage without the need for hardware procurement.



LYVE™
Cloud





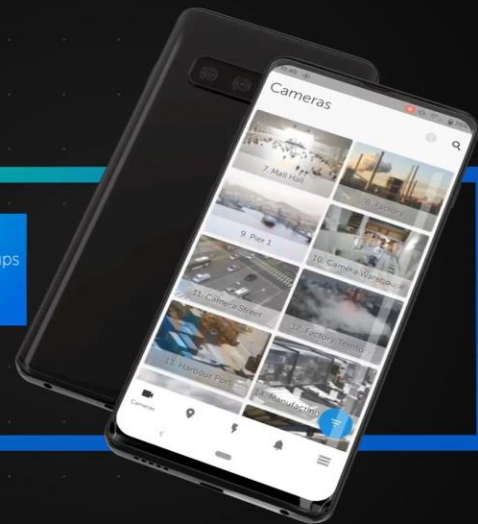
Mobile Clients for iOS and Android

MOBILE
APPLICATIONS

- View live and recorded video.
- Quickly search for events.
- Control PTZ cameras.
- Work with fisheye cameras.
- Use digital zoom.
- Receive push notifications.
- Run macros.
- Use geo-maps.

Camera groups and layouts

Display cameras in different modes,
according to configured layouts or groups





Coming Soon

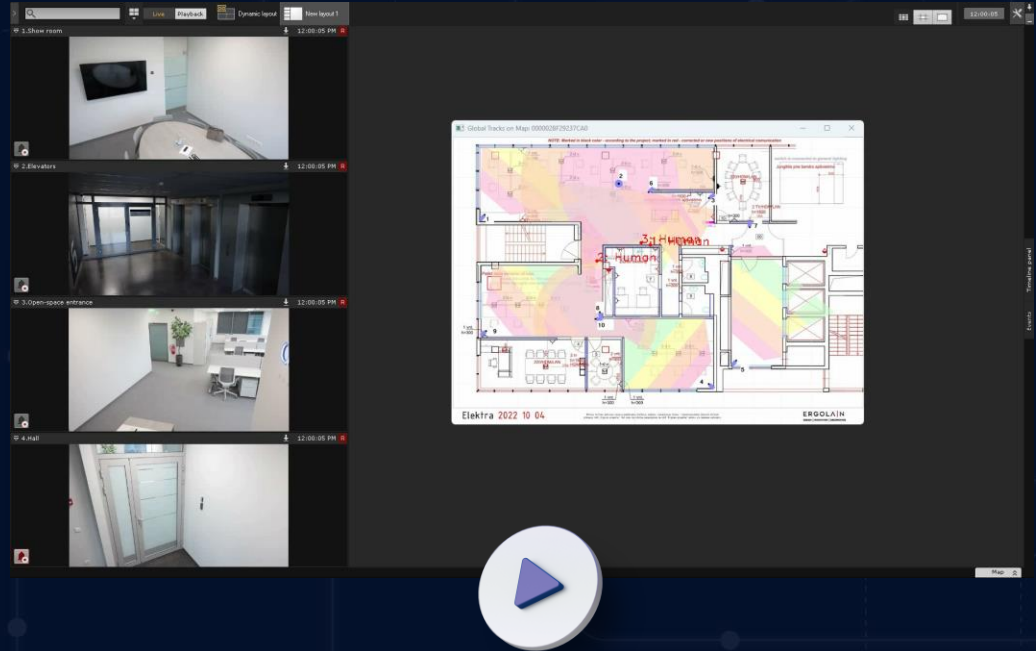
State-of-the-art AI video analytics capabilities



Multi-Camera Tracking

AI ANALYTICS

- AI analytics tracks objects across multiple camera fields of view based on appearance similarity.
- Axon One displays moving objects on the map.
- It automatically switches cameras in the layout for seamless tracking in live and recorded video.





Person Attributes Recognition

ARTIFICIAL
INTELLIGENCE

Body position

Clothing attributes



Client/server frame rate: 15.0 / 15.0
Bitrate 2594 Kbit/sec
Client/server frame size: 896x504 / 1920x1080

2024-03-25 11:48:26 | PAR Camera



Person attributes are recognized:

Gender: Male
Position: Front
Clothes: Longsleeve, Shorts

2024-03-25 11:47:53 | PAR Camera



Person attributes are recognized:

Gender: Male
Position: Front
Clothes: Jacket, Trousers

2024-03-25 11:48:14 | PAR Camera



Person attributes are recognized:

Gender: Male
Position: Back
Clothes: T-shirt, Trousers

2024-03-25 11:47:56 | PAR Camera



Person attributes are recognized:

Gender: Female
Position: Side
Clothes: Jacket, Trousers

Licensing & Prices

Axxon One Editions

General Features	Professional	Enterprise	Unified
Max. number of servers in a distributed system	30	30	Unlimited
Maximum number of cameras in a system	Unlimited	Unlimited	Unlimited
Real-time analytics (Object Tracker)	✓	✓	✓
Edge analytics (camera metadata)	✓	✓	✓
Edge storage (playback only)	✓	✓	✓
GreenStream adaptive bandwidth management	✓	✓	✓
Interactive 3D Map	✓	✓	✓
Web Client	✓	✓	✓
TimeSlice search (search by time intervals)	✓	✓	✓
Macros (event-response scenarios)	✓	✓	✓
ONVIF Profiles S, G, T, M	✓	✓	✓
Video bookmarking (searchable text comments)	✓	✓	✓
AxxonNet cloud service	✓	✓	✓
AxxonNet reports	✓	✓	✓
Cross-System Client	✓	✓	✓
Storage replication	-	✓	✓
Failover	-	✓	✓
Videowall	-	✓	✓
LDAP service	-	✓	✓
Datacenter Domain Unification	-	-	✓

AI Features and Retail License Pack	Professional	Enterprise	Unified
Smart event search	Add-ons	✓	✓
Multi-camera face search	Add-ons	✓	✓
Face mask detection	Add-ons	✓	✓
Multi-camera LPR/ANPR search*	Add-ons	✓	✓
Tag&Track (PTZ object tracking)	Add-ons	✓	✓
AI human/vehicle detection	Add-ons	✓	✓
AI fire and smoke detection	Add-ons	✓	✓
People counting	Add-ons	✓	✓
Heat map	Add-ons	✓	✓
Queue detection	Add-ons	✓	✓
QR\Barcode reader	Add-ons	✓	✓
Similarity Search	-	Add-ons	✓
Crowd estimation	Add-ons	Add-ons	Add-ons
Meta-detector	Add-ons	Add-ons	Add-ons
Fight detector	Add-ons	Add-ons	Add-ons

Personal Protective Equipment Detection	Professional	Enterprise	Unified
Helmets	Add-ons	Add-ons	Add-ons
Hi-vis vests	Add-ons	Add-ons	Add-ons
Protective clothing	Add-ons	Add-ons	Add-ons

Human Behavior Analytics	Professional	Enterprise	Unified
Man down	Add-ons	Add-ons	Add-ons
Hands up	Add-ons	Add-ons	Add-ons
Squatting man	Add-ons	Add-ons	Add-ons
Social distancing violation	Add-ons	Add-ons	Add-ons

AI Features and Retail License Pack	Professional	Enterprise	Unified
Integration with Access Control System (licensed as an add-on in all editions)	50 readers max	100 readers max	Unlimited readers
Integration with Fire/Security Alarm System	Add-ons	Add-ons	Add-ons
Integration with Perimeter Intrusion Detection System	Add-ons	Add-ons	Add-ons
Support for external event sources (POS, other devices)	Add-ons	Add-ons	Add-ons
Facial recognition (positive/negative watchlists)	Add-ons	Add-ons	Add-ons
LPR/ANPR (positive/negative watchlists)*	Add-ons	Add-ons	Add-ons
Custom AI analytics	Add-ons	Add-ons	Add-ons
Water level detection	Add-ons	Add-ons	Add-ons
Audio Analytics	Add-ons	Add-ons	Add-ons

* Please contact us for more information on our LPR/ANPR licensing policy and supported countries.



axxon
ONE

Thank you!