

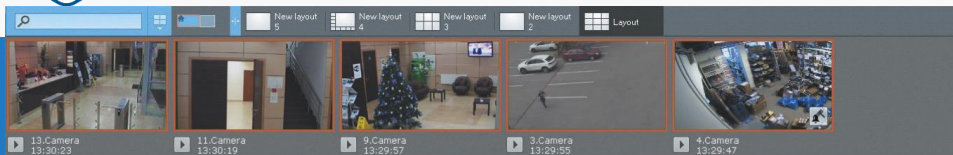


axxonSOFT



Streamlined User Interface

Quick to configure
Easy to manage



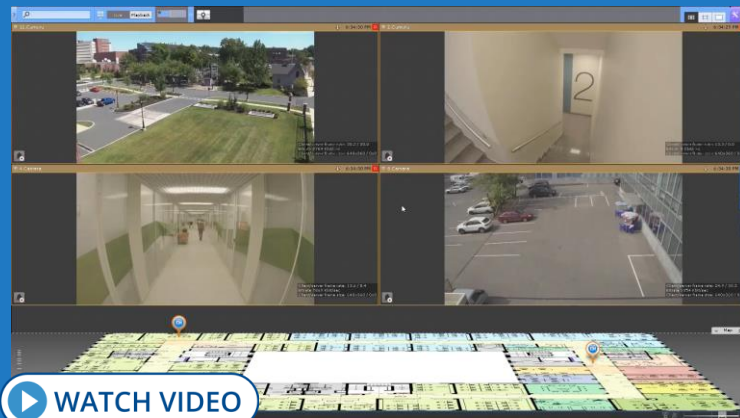
ALARMS PANEL:

- Video thumbnails of recent alarms that require operator attention
- A separate list of already processed alarms

AUTO-DISCOVERY WIZARD:

- Better experience with mass addition and configuration of cameras
- Easier creation and configuration of video archives

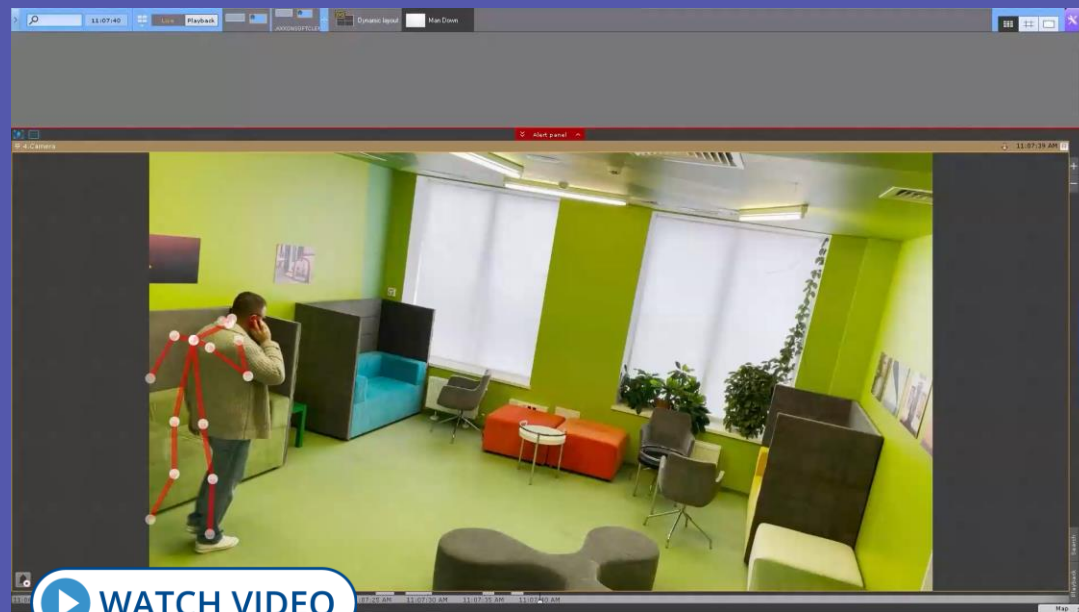
- LAYOUTS SCREEN – functional and attractively designed
- INFORMATION BOARDS – display events, system information, statistics, and web pages





AI Behavior Analytics

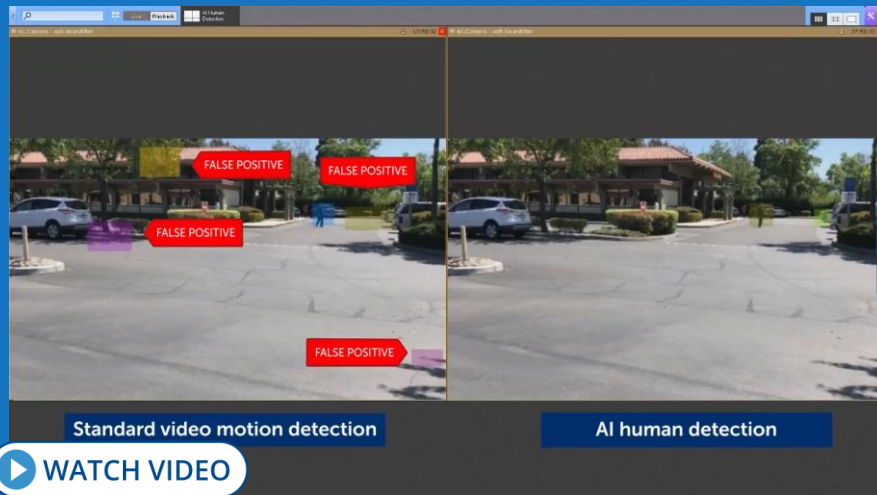
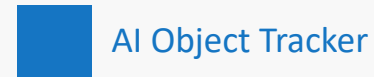
Posture detection



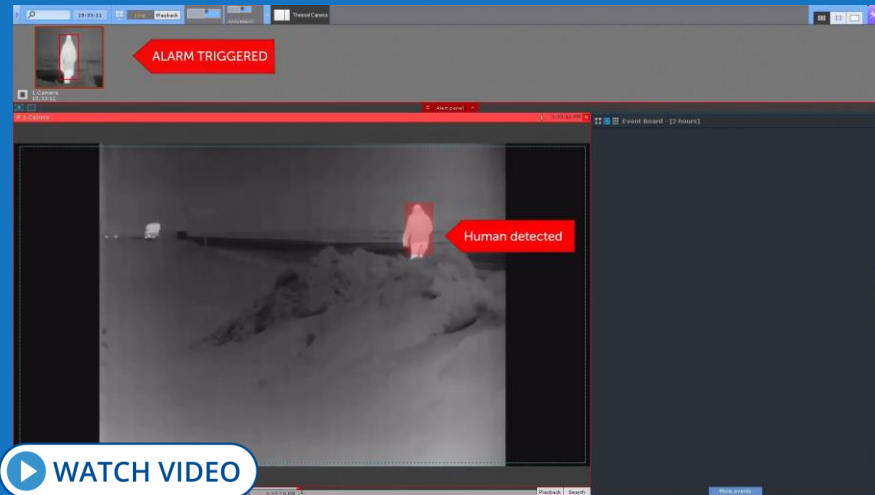
Behavior Analytics recognizes situations of risk early on by detecting specific human postures: for example, a cashier's raised arms, or a person crouching by an ATM. People counter tracks the total number of individuals within a specified area and notifies staff upon reaching/exceeding the pre-defined limit. Handrail holding detection helps in labor safety enforcement at production facilities, construction sites, working at height, etc.



AI Human Detection



False alarms reduction



Thermal camera human detection



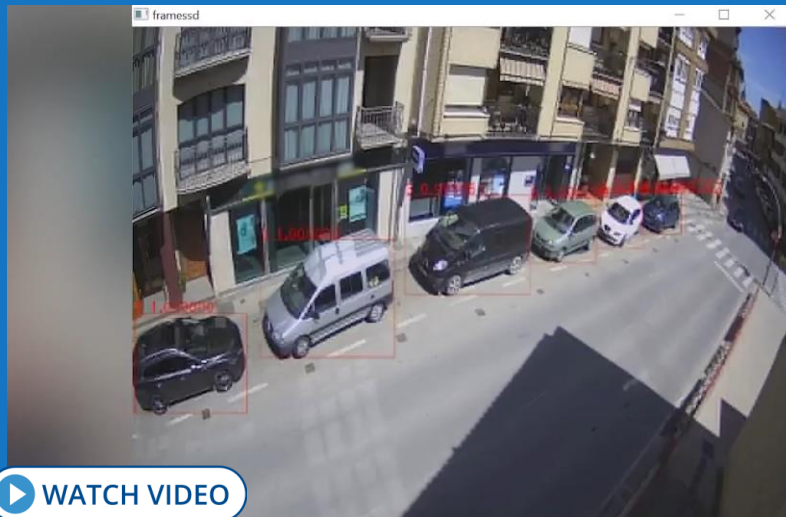
AI Object Tracker





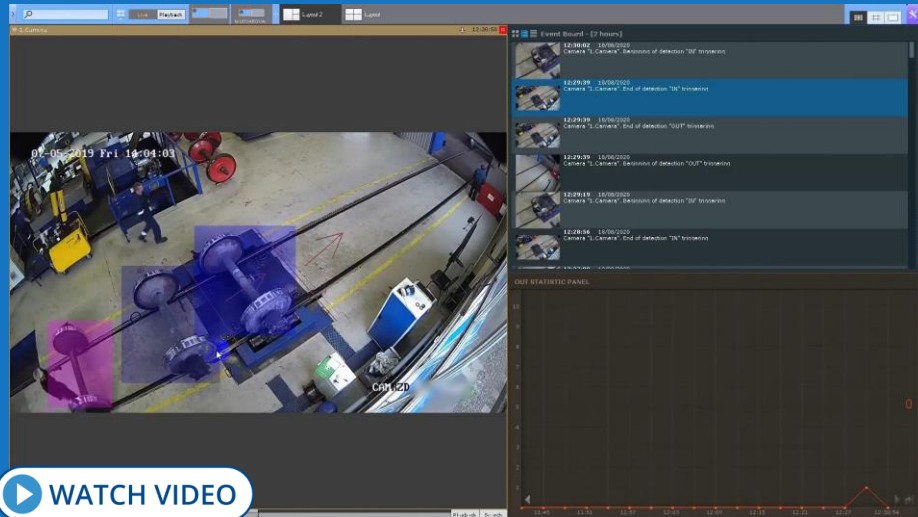
AI Object Detection

AI Object Tracker



[WATCH VIDEO](#)

Parking time control

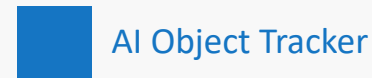


[WATCH VIDEO](#)

Wheelset maintenance control



AI Object Detection/Counting



Railway traffic statistics collection



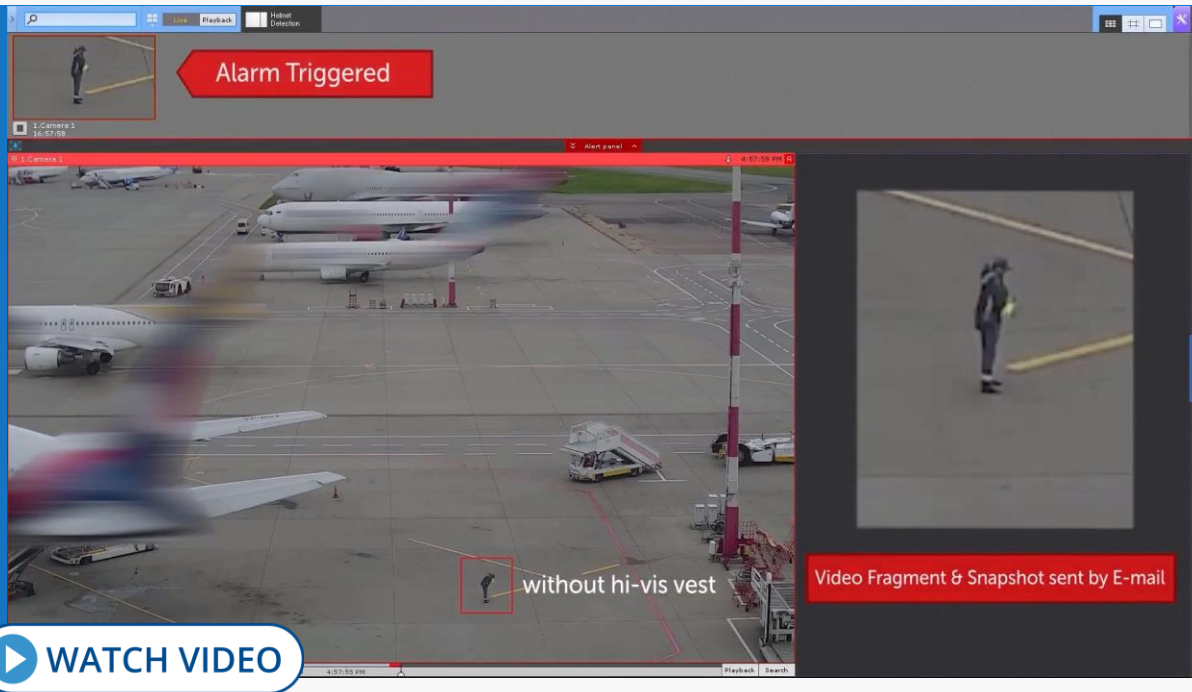
Animal counting



AI Protective Gear Use Control

Workplace safety
enforcement

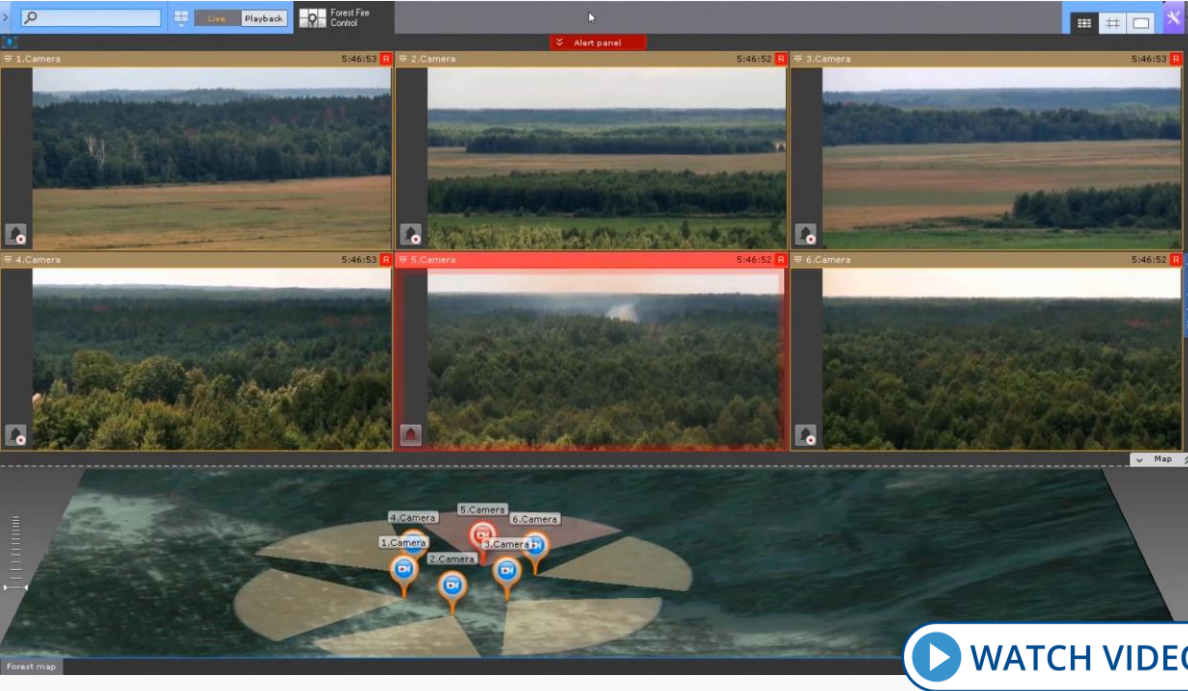
Personal protective equipment (PPE) detection tool is used for workplace safety enforcement. It locates individuals wearing no hard hats, high-visibility vests, and protective clothing or individuals wearing improperly applied PPE.





AI Fire/Smoke Detection

Detect fire early in open, and large enclosed spaces



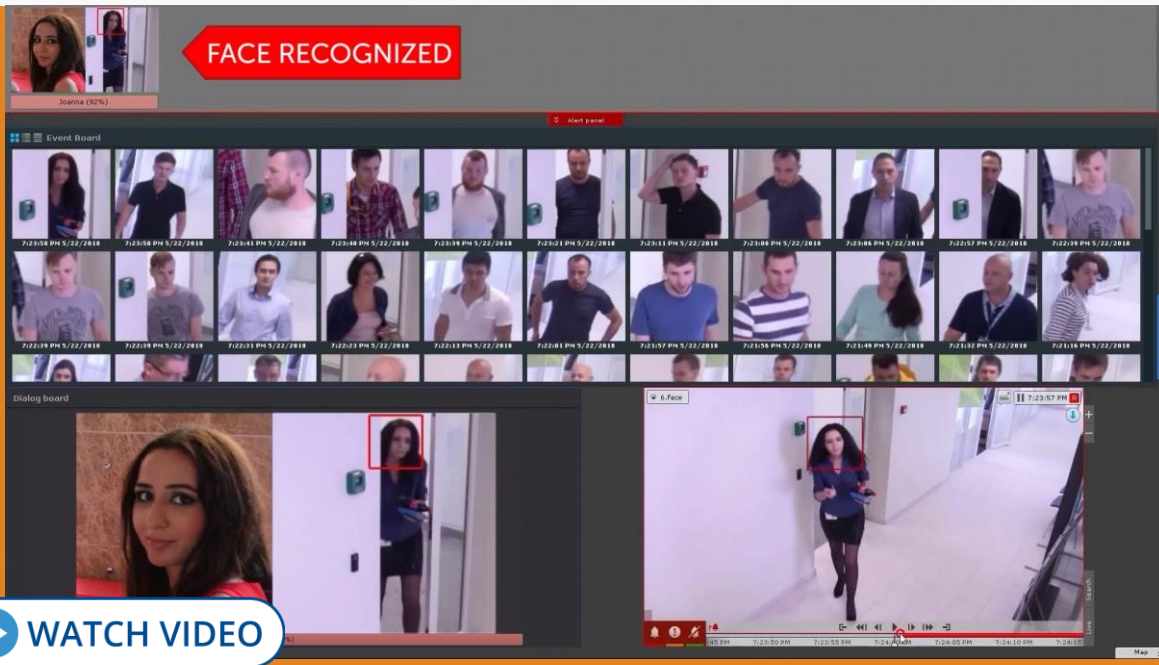
Intelligent fire and smoke video detection operates in areas where other types of sensors are ineffective, e.g., in open spaces. It provides early detection of fire hotspots which leads to a significant reduction in damage.



Facial Recognition and Search

Positive/negative watchlists support

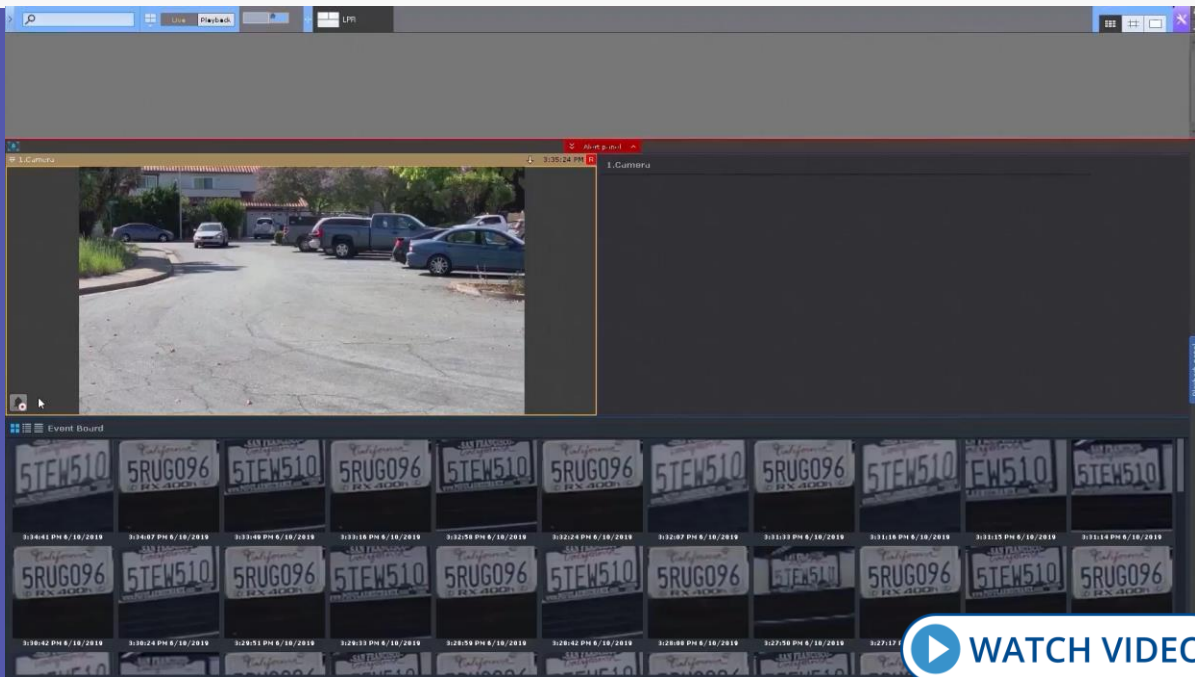
Create watchlists and configure list-specific response scenarios. Upon recognition of a face from a list, the corresponding scenario starts. You can use this option to create lists of regular customers and/or unwanted visitors and automatically notify retail or security staff of their entry. You can also quickly search video footage by face images.





License Plate Recognition and Search

Positive/negative
watchlists support



Create watchlists and configure automatic scenarios when a match is found. For instance, notify the operator when the recognized number is on the negative watchlist, or open the barrier when the number is on the access list.

You can also quickly check a vehicle number, full or partial, against the video footage.

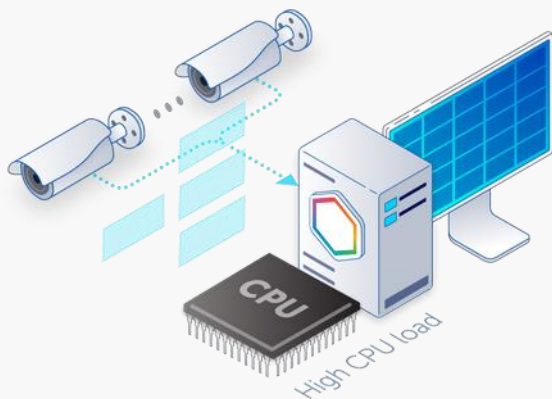




Server-Side GPU Acceleration

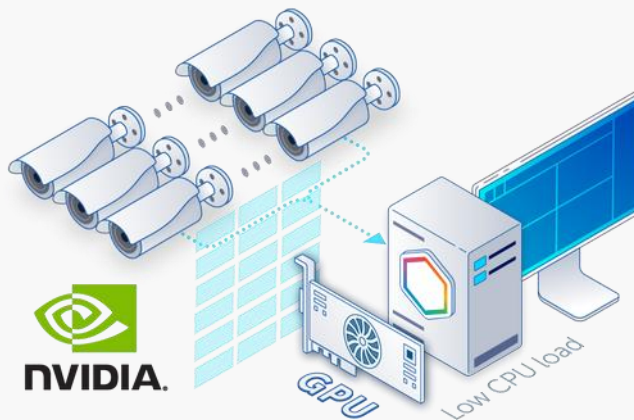
Cost-effective systems with video analytics

CPU VIDEO PROCESSING

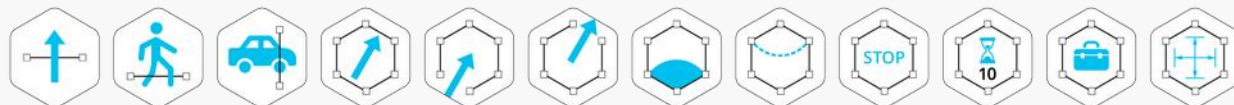


GPU VIDEO PROCESSING

SEVERAL TIMES MORE CAMERAS PER SERVER



VIDEO ANALYTICS



- Hardware video decoding on NVIDIA graphics cards.
- AI acceleration on NVIDIA GPUs and dedicated AI accelerators.
- Reduced footprint on the server CPU performance when using video analytics.
- More cameras can be connected to a single server, reducing hardware expenses and support issues.

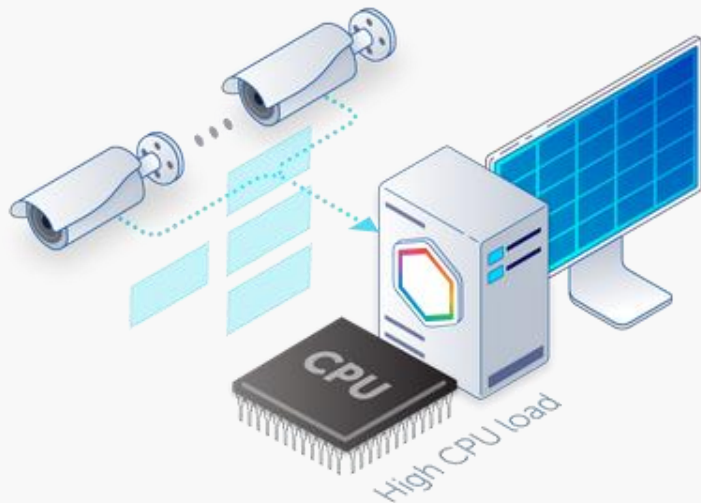


Client-Side GPU Acceleration



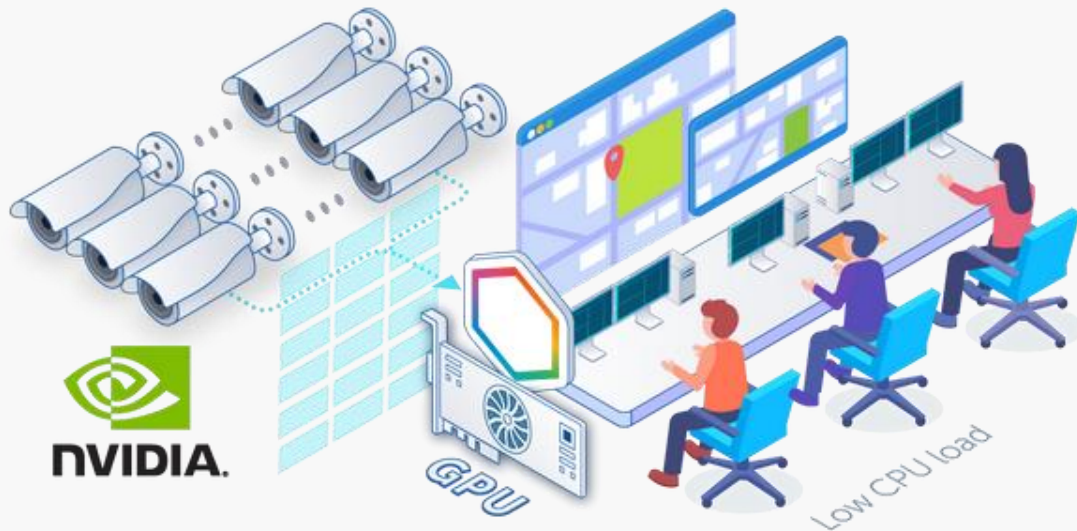
For video walls

CPU VIDEO DECODING



GPU VIDEO DECODING

SMOOTH PLAYBACK OF DOZENS OF HI-RES VIDEO FEEDS



- Hardware video decoding on NVIDIA graphics cards.
- Smooth playback of dozens of Full HD videos.
- Building large video walls based on just a few client computers.

- Reduced client CPU load, especially when decoding H.265 video feeds.
- You can use client computers with lower CPU performance specs.

axxonsoft



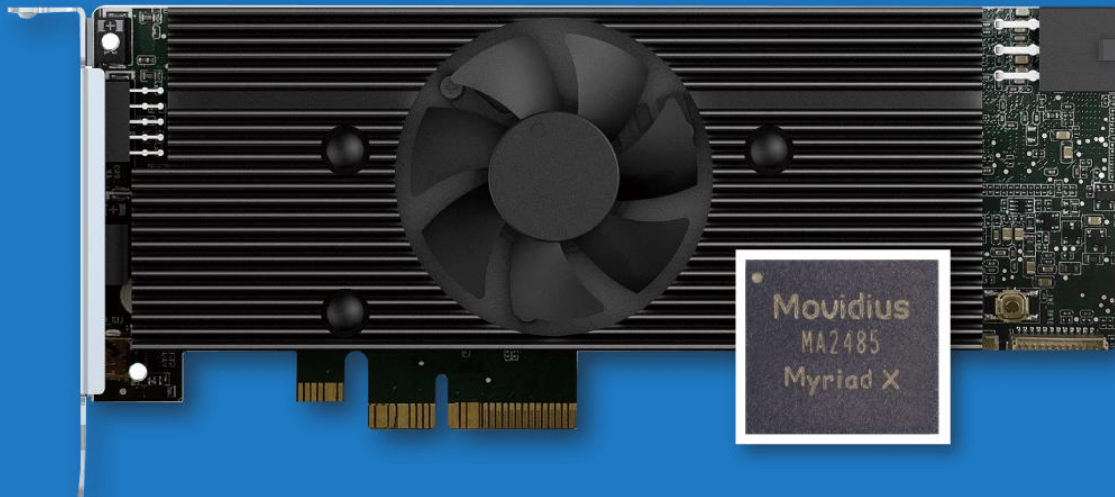
Intel® Distribution of OpenVINO™ Toolkit

Increase AI performance

OpenVINO™ toolkit extends AxxonSoft AI analytics workloads across Intel® hardware (including accelerators) and maximizes performance.

Axxon One supports the latest Intel® Vision Accelerator Design products with Intel® Movidius™ VPU:

- Mustang-V100-MX8
- Neural Compute Stick 2



intel.
partner

IoT Video
Specialist



Intel® Quick Sync Video

Display more cameras on the client's screen

You can use Intel® Quick Sync Video technology for client-side GPU video decoding. This results in:

- Reduced footprint on the client CPU performance, especially when decoding H.265 video feeds.
- Dramatically improved decoding times, which is essential for smooth playback.
- More cameras can be displayed on the client's screen, or you can use client computers with lower performance specs.

WITHOUT GPU ACCELERATION	Intel® Quick Sync Video WITH GPU ACCELERATION
 <p>CPU 82%</p>	 <p>CPU 37%</p>

[WATCH VIDEO](#)

intel.
partner

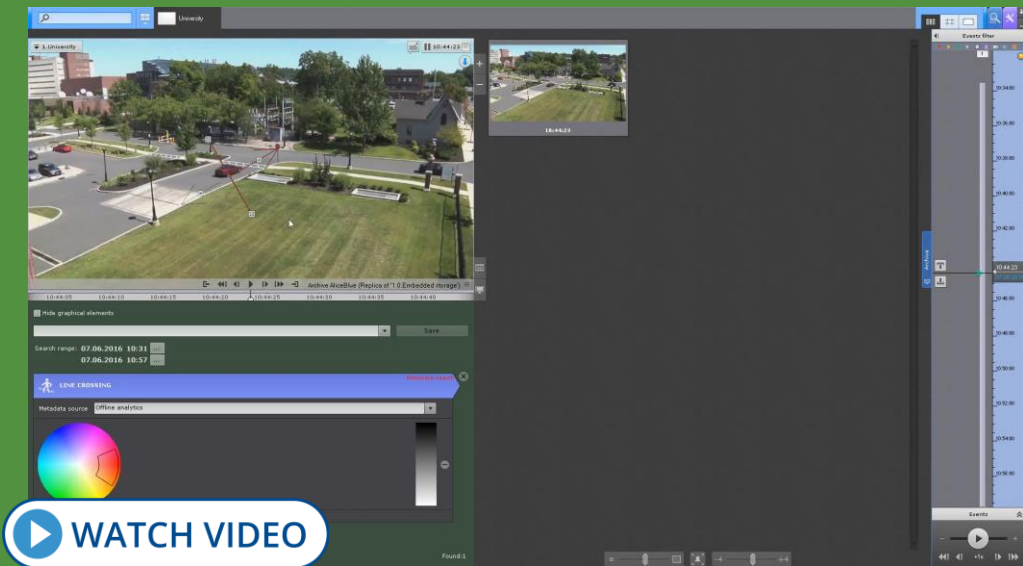
IoT Video
Specialist



MomentQuest Smart Search

Near-instant forensic
search for recorded video

MomentQuest analyzes live video and generates a stream of metadata – a lean description of moving objects within the scene – which is recorded along with video stream. To retrieve recorded footage of an event of interest, just enter specific criteria: motion in area(s), crossing of a line, object color or size, etc. Within seconds the system displays thumbnails of relevant video episodes. Save a search query for later use on any camera.





Offline Analytics

Fully functional forensic search in imported videos



IMPORT ANY VIDEO FOOTAGE
AND ANALYZE IT WITH
FORENSIC SEARCH.

The following functions can be
applied to imported videos:

- MomentQuest
- Face search
- License plate search

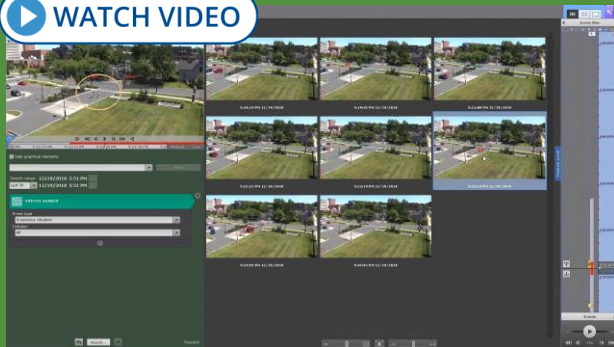


Other Search Options

Simple yet effective



WATCH VIDEO



Search by alarm events



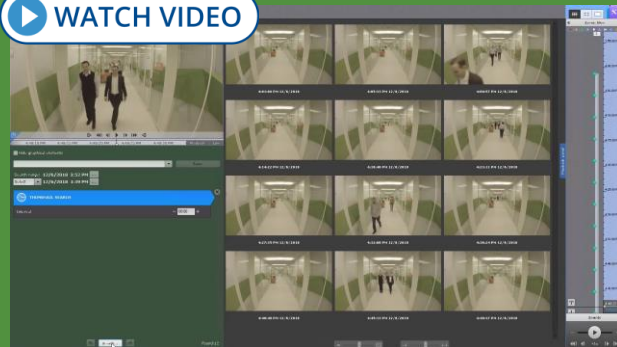
WATCH VIDEO



Search
by bookmarks



WATCH VIDEO

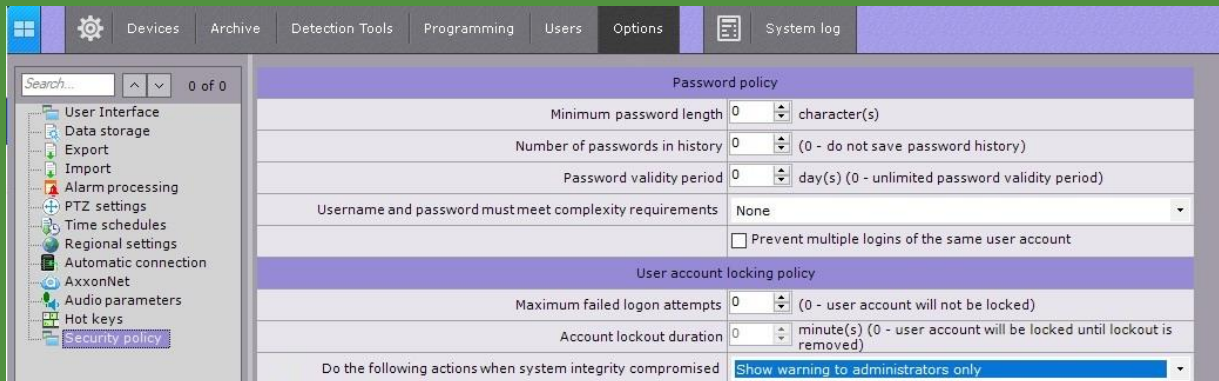


Search by time intervals
(time slicing)

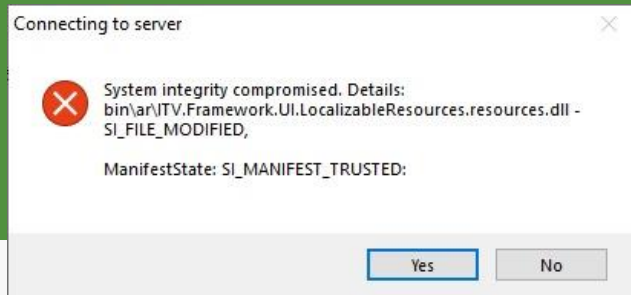


System Integrity Check

Prevent unauthorized interference with your VMS



- Auto-check of all executable files upon server/client start-up.
- Administrator warning and other specified actions when the check fails.





Security Policy

Protect your VMS from unauthorized access

Each user-related event includes the user's IP address. When accessing the server, the MAC address of the client computer is registered in the system event log. The Export Start event includes the username.

Search... 0 of 0

User Interface
Data storage
Export
Import
Alarm processing
PTZ settings
Time schedules
Regional settings
Automatic connection
AxxonNet
Audio parameters
Hot keys
Security policy

Password policy

Minimum password length	0	character(s)
Number of passwords in history	0	(0 - do not save password history)
Password validity period	0	day(s) (0 - unlimited password validity period)
<input type="checkbox"/> Username and password must meet complexity requirements		
<input type="checkbox"/> Prevent multiple logins of the same user account		

User account locking policy

Maximum failed logon attempts	0	(0 - user account will not be locked)
Account lockout duration	0	minute(s) (0 - user account will be locked until lockout is removed)

Filter of allowed IP addresses

IP address	Prefix	
10.0.12.1	24	Add

	Delete	IP address	Prefix	Filtering range
▶	×	10.0.12.39	32	10.0.12.39
	×	10.0.11.31	24	10.0.11.0 - 10.0.11.255

Set up:

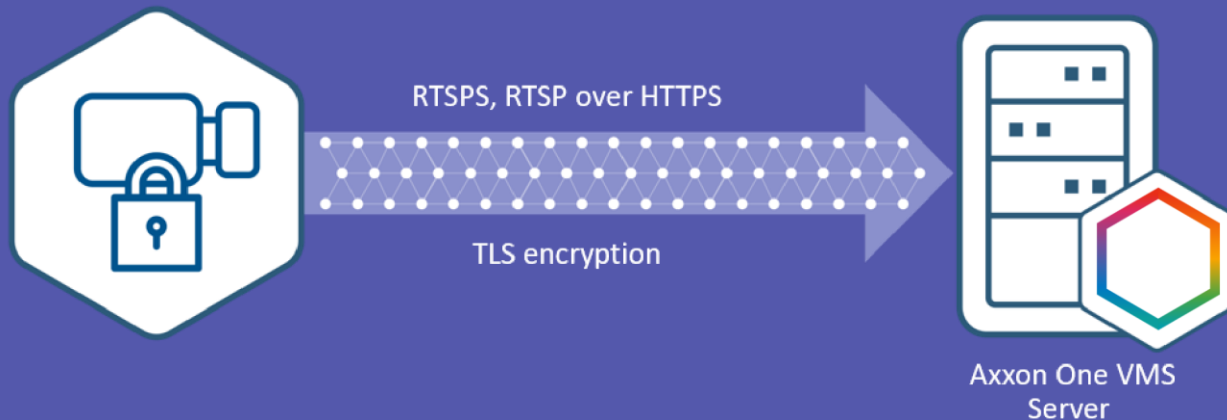
- The minimum password length.
- A password validity period.
- The number of passwords in history.
- Password strength control.
- Prevention of multiple simultaneous sessions of the same user.
- Account lockout time/number of failed login attempts.
- A range of permissible IP addresses for client computers.
- Access to the server with administrator confirmation.



Secure Camera Connection

Encrypted video
streaming

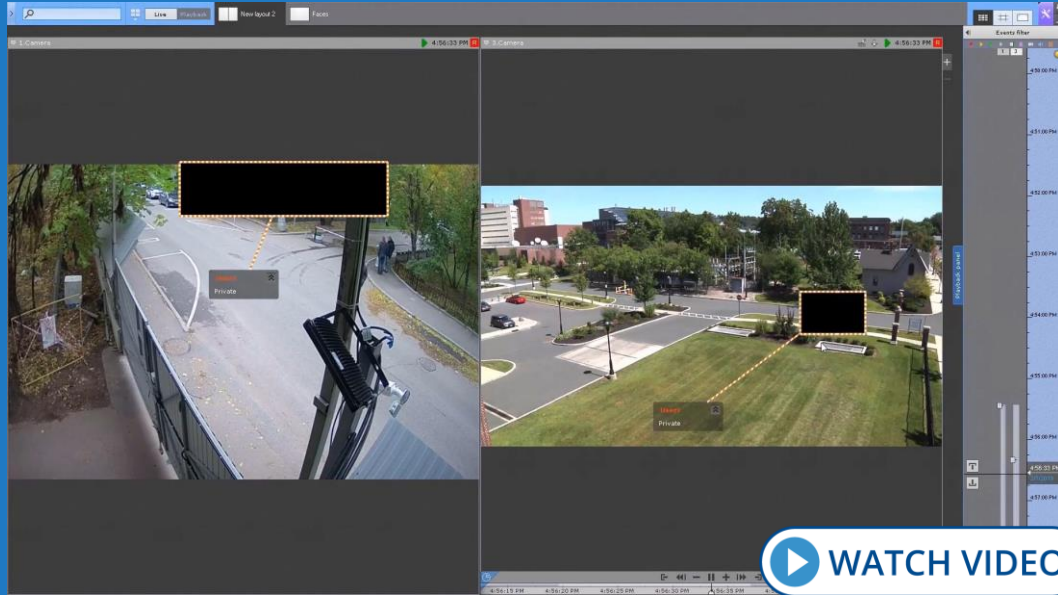
- Axxon One receives encrypted video streams from cameras.
- Supports RTSPS, and RTSP over HTTPS for ONVIF compliant devices.
- Supports TLS encryption.





Privacy Settings

Hide objects or faces from those in specified user roles

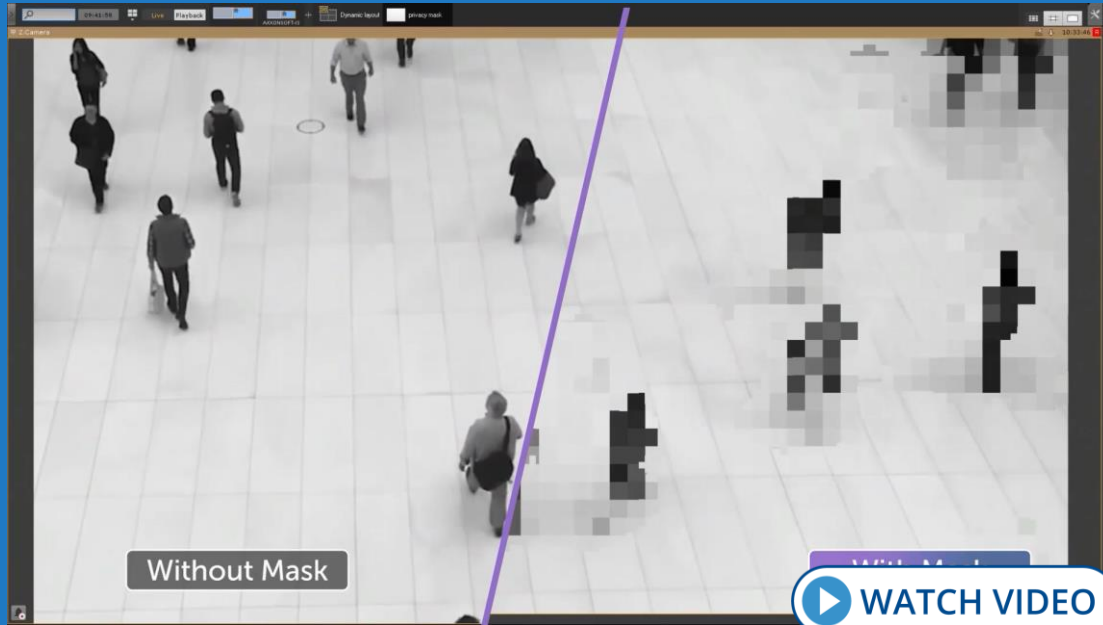


Privacy settings are essential for compliance with GDPR (The EU General Data Protection Regulation). You can mask any static or moving objects in recorded video from those in specified user roles. You can also hide faces using the face detection tool. The objects or faces will be blocked with solid color while viewing and searching the archive, as well as on exported video.



Dynamic Privacy Masking

Intelligent object masking in live and recorded video



Axxon One can automatically mask objects in live and recorded video, which is essential for compliance with GDPR and other data protection/privacy regulations. An intelligent, resource-optimized algorithm reliably masks objects in the camera's FOV while using minimal computing power. You can also apply AI detection to hide only certain objects, e.g., humans.



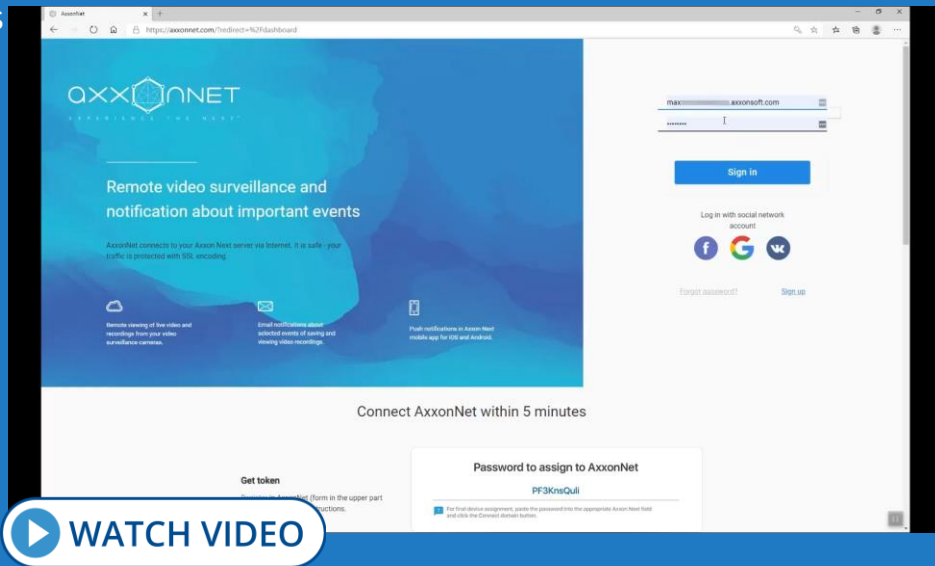
Cloud-Managed VMS

Remote video monitoring and event notification

AxonNet securely connects to your Axon One VMS servers via the HTTPS protocol. TLS encryption safeguards the data transmitted from the server to the cloud. Password hashing ensures that user passwords are inaccessible to attackers.

With AxonNet, you can:

- Use all Web Client's features and view reports.
- Send reports by email on schedule.
- Receive email notifications on the events of specified types and view linked videos stored in the cloud.
- Send push notifications on certain events to mobile clients.
- Create face and license plate watchlists.
- Create users and roles for your Axon One VMS.





Cloud Reports and Dashboards

Visualization of video analytics data

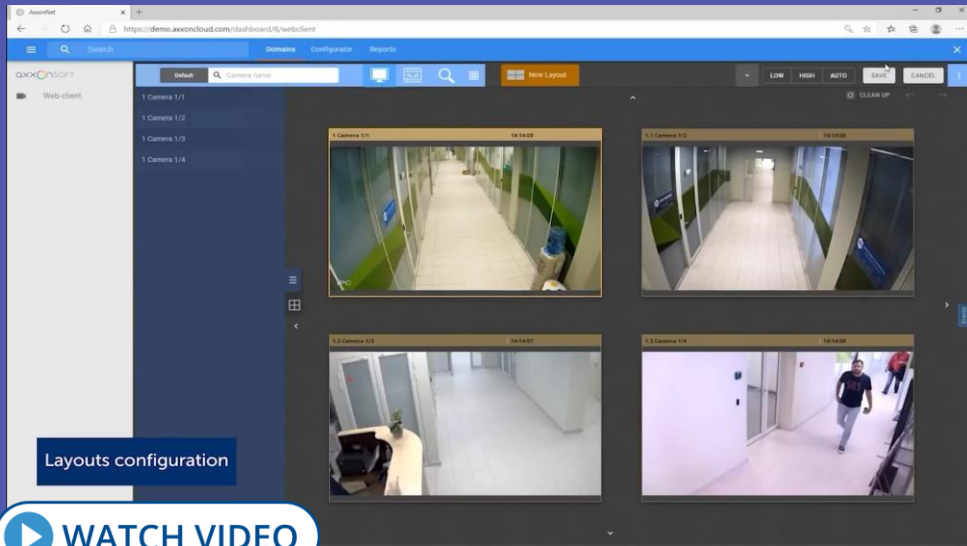
- Reports in graphs, histograms, and tables are based on alarms and the data generated by Axxon One video analytics.
- You can create dashboards containing custom reports and other widgets for data representation.
- With dashboards, it's easy to visualize, analyze, and share information with other users of the video surveillance system.





Web Client

Video monitoring in your browser



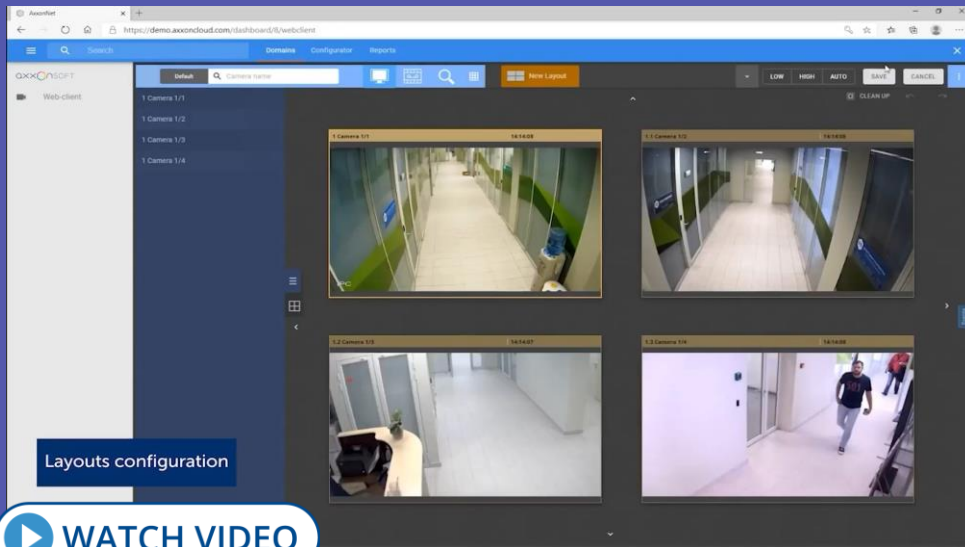
WEB CLIENT enables you to:

- Configure various layouts.
- Search recorded video by faces, plate numbers, events, criteria (MomentQuest), and time intervals (time slicing).
- View motion heat maps.
- View alarm events.
- Work with bookmarks.
- Control PTZ cameras.
- Apply digital zoom.
- Export still frames and videos.
- View camera and video archive statistics.



Fast search in Web Client

Video monitoring in your browser



WEB CLIENT enables you to:

- Configure various layouts.
- Search recorded video by faces, plate numbers, events, criteria (MomentQuest), and time intervals (time slicing).
- View motion heat maps.
- View alarm events.
- Work with bookmarks.
- Control PTZ cameras.
- Apply digital zoom.
- Export still frames and videos.
- View camera and video archive statistics.

New Suite



DEEP LEARNING
(AI) ANALYTICS



NEW MODERN
GUI



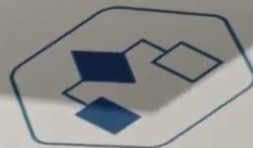
INTERACTIVE
3D MAP



FACE SEARCH



LPR



MACROS



POS Supervision

Axxon One Retail Pack

Axxon One receives data from cash registers and links it to video feeds. The receipt text is superimposed on the video or displayed in a separate pane. You can use receipt data to retrieve POS transaction videos from the recorded footage.



[WATCH VIDEO](#)



Queue Management

Axxon One Retail Pack

The tool detects the number of people in queueing areas. Knowing actual customer numbers empowers you to manage human resources in both the short and long term.





Visitor Counter

Axxon One Retail Pack

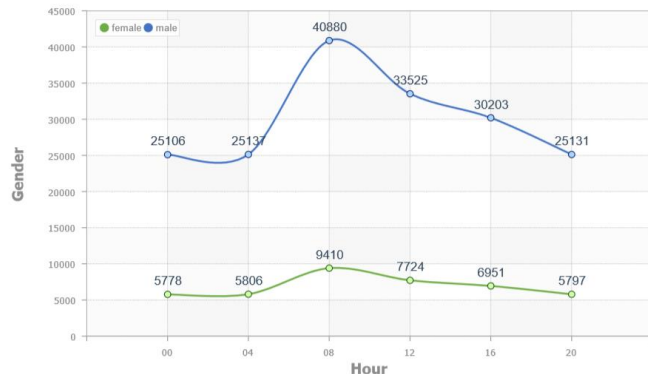
This tool counts customers entering or exiting the store or a specific area. The information collected may be used, along with sales data, to estimate your sales conversion rate and/or for market research.





Age and Gender Guesstimation

Axxon One Retail Pack



	Hour						
Gender	00	04	08	12	16	20	Total
female	5778	5806	9410	7724	6951	5797	41466
male	25106	25137	40880	33525	30203	25131	179982
Total	30884	30943	50290	41249	37154	30928	221448

The facial recognition tool guesstimates the age and gender of visitors. The saved data may be used for customer analysis, digital signage targeting, and other marketing purposes.





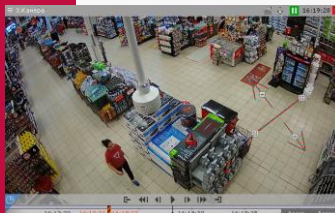
Heat Map

Axxon One Retail Pack



A heat map is a graphic representation of visitor activity (visitor numbers/time spent) in different store areas. The heat map can be generated from tracking data for all objects or objects specified with forensic search criteria.

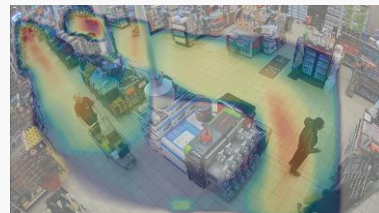
Query



Visitor numbers



Time spent

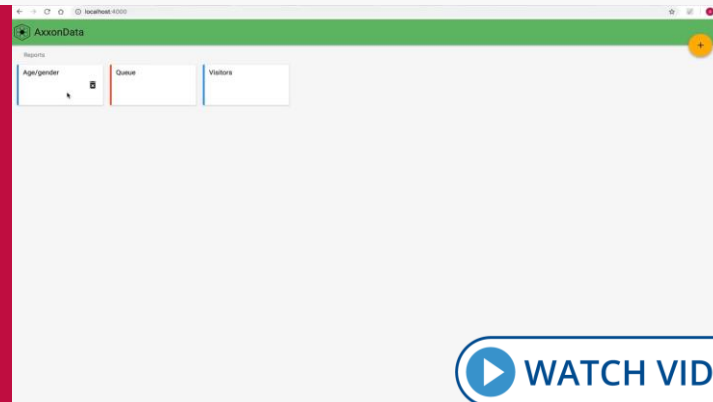
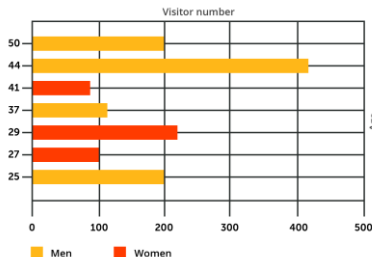
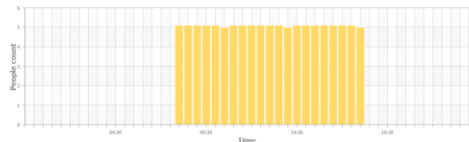
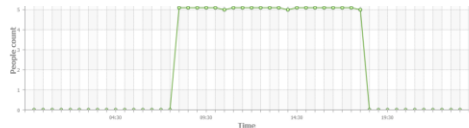
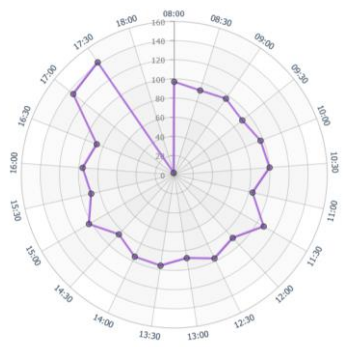
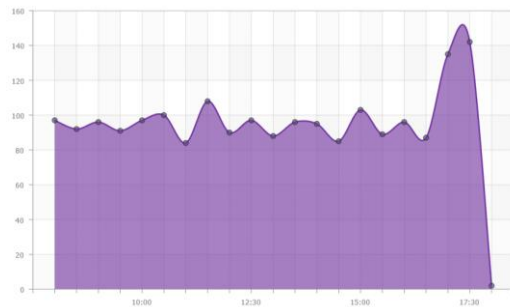




Online Comprehensive Reports

AxxonData

Visitor distribution by hour



[WATCH VIDEO](#)

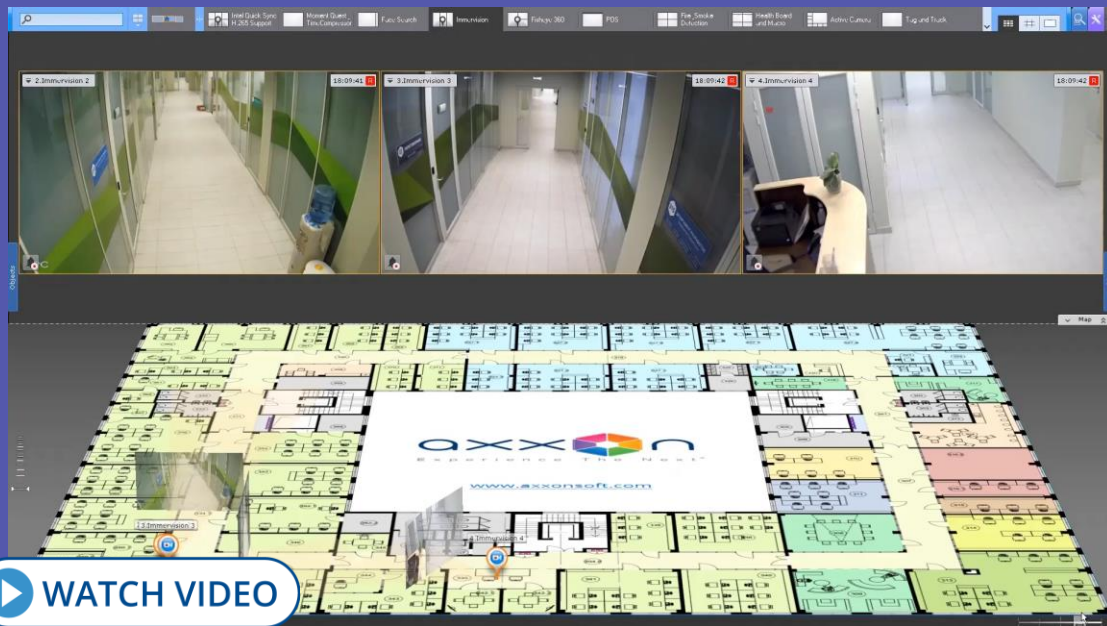
You can build custom reports based on visitor count, queue length, and age and gender guesstimation. AxxonNet cloud service enables you to obtain reports from any store within your retail chain via the web interface.



Interactive 3D Map

Show video on a site map

- Interactive 3D map superimposes camera locations on a site map and displays camera views in the same window. You can instantly pinpoint where a selected camera is located.
- Cameras in the current layout are color-coded by their status.
- In Immersion mode, a semi-transparent video is superimposed on the map. This makes it easy to see where an object is located and where it is going.





Vape Detection

HALO Smart Sensor
integration

- Monitor the air quality for any abnormal compounds emitted from vaping devices (including THS oils).
- Detect intentional vape masking behavior by using aerosols to cover it up.
- Alert faculty when and where students vape on school grounds and trigger recording to get video evidence.
- HALO Smart Sensor has 38 different types of sensors (temperature, humidity, CO, gunshot, etc.) to capture comprehensive health, safety, and vaping awareness.
- Axxon One can trigger alarms upon reaching the pre-configured sensor thresholds and superimpose the current sensor readings on the video in real time.





Image Dewarping

Support for fisheye cameras



- Image correction (dewarping) is performed **ON THE GPU** of the client computer, without any additional burden on the CPU.
- Several normal, dewarped images with different aspect ratios are displayed on the client screen.
- Axxon One supports standard fisheye-lens cameras as well as **IMMERVISION** panomorph lenses.



FrameMerge

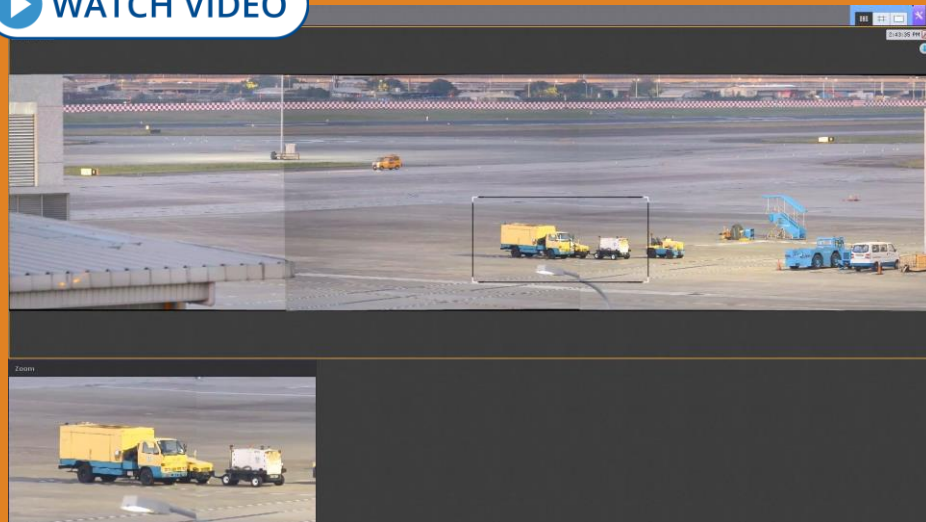
Effective control over
extended areas



WITH FRAMEMERGE,
YOU CAN:

- Combine a panoramic view from up to 3 camera feeds.
- View the resulting video in Live or Archive mode.
- Export panoramic videos to standard .avi or .mkv files.
- Select and zoom into any part of the panoramic image in a linked Dialog Board.

WATCH VIDEO





Links Between Cameras

Track objects from
camera to camera

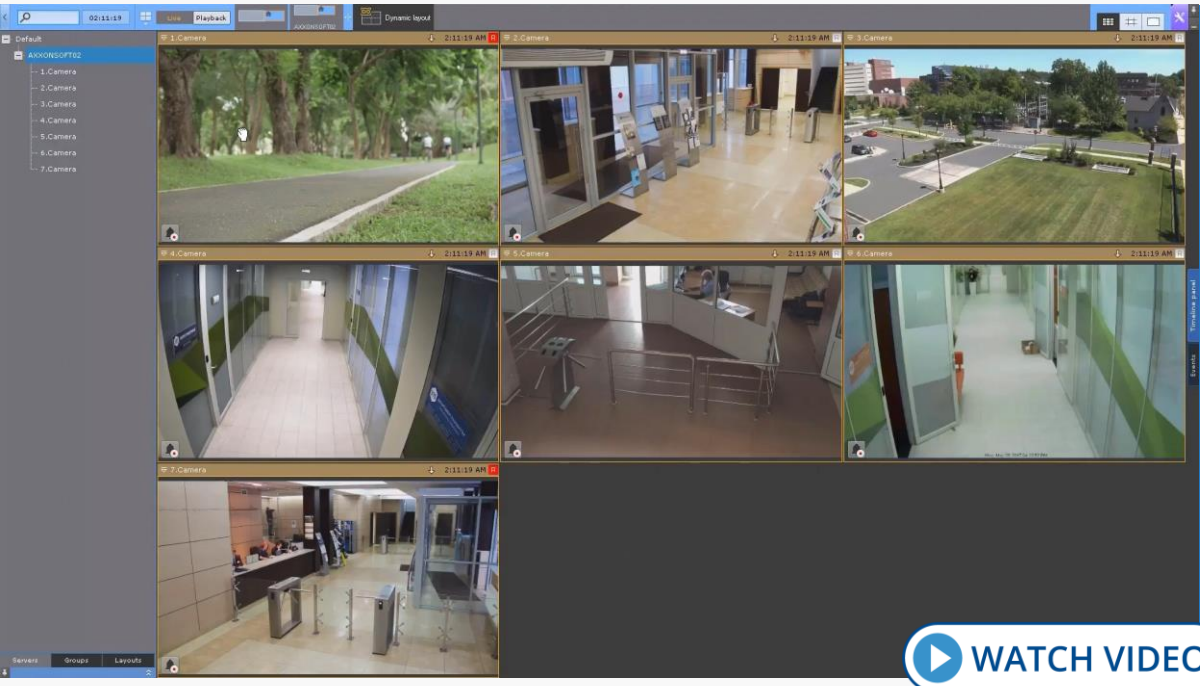


You can include links to other cameras in a camera window. Clicking a link brings you to the linked camera. This function facilitates object tracking across different cameras' FOVs.



Dynamic Layout

Convenient handling
of various tasks

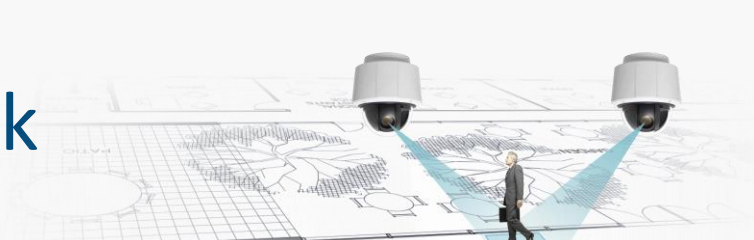


- On client start-up, the dynamic layout is always empty.
- Add cameras you need for a specific task, one by one or several at once.
- Save the configured layout for later use.





Tag&Track



Use multiple cameras to track objects

TAG&TRACK LITE

- All cameras are linked to a site map.
- Operator selects a moving object to track.
- If the object leaves the field of view of one camera, Axxon One predicts where it will appear next.
- The “destination” camera is highlighted in the current layout.
- Tag&Track Lite also works in Immersion and Archive mode.



TAG&TRACK PRO

- Get the “big picture” of everything happening at a site with fixed cameras.
- Obtain detailed imagery of the objects moving around it with PTZ cameras.
- A PTZ camera automatically tracks objects across multiple fixed cameras.

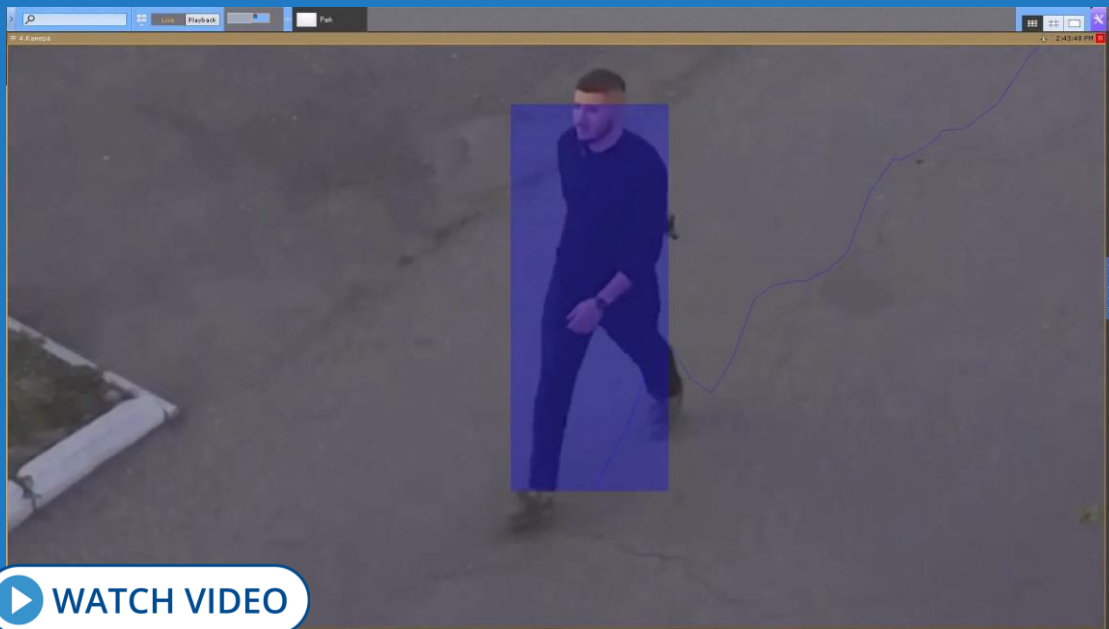
Both sets of images can be recorded, which is important for event investigation.



Autozoom

Track and zoom in on moving objects

- AUTOZOOM AUTOMATICALLY FOLLOWS OBJECTS IN THE FIELD OF VIEW.
- Enlarges the area of the scene in which moving objects are located and follows the objects as they move.
- Works both with fixed cameras (via digital zoom) and fisheye cameras.





Hotkeys



Quick and handy
Faster operator reaction

Hotkeys – combinations of keyboard keys or joystick buttons:

- Trigger certain actions in the system
- A quicker way of accessing frequently used commands
- Reduce the reaction time

Control Axxon One-based systems with:

- Standard PC keyboards
- CCTV controller keyboards

Axxon One hotkeys:

- Default (easy-to-remember generic combinations)
- User-configurable



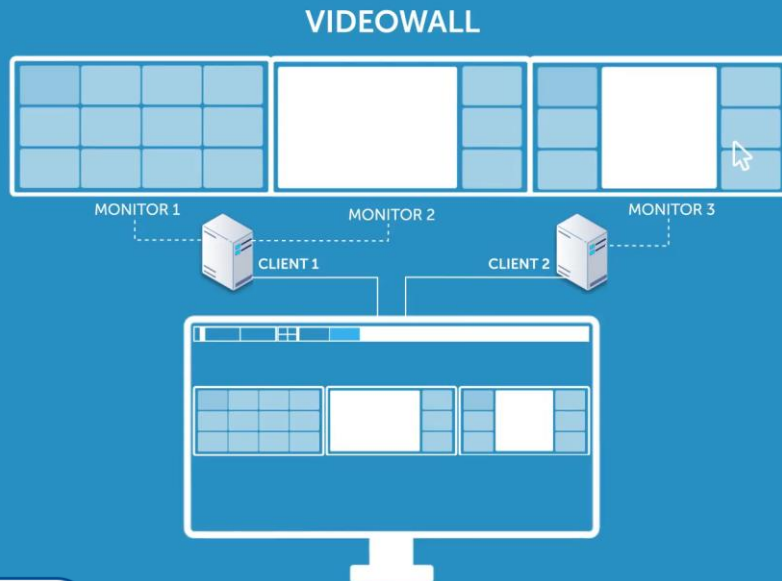


Video Wall Management



Incredibly useful
for monitoring hubs

- Designate a client computer or several computers as a video wall.
- Configure multi-computer and multi-monitor video walls with ease.
- Manage the video wall from any remote client.



[▶ WATCH VIDEO](#)



Cross-System Client

More options for security systems management

Cross-System Client is useful at geographically distributed sites or multiple-location chains, such as retail stores or gas stations.

- Connect a single client workstation to multiple surveillance servers on different domains.
- All settings and cameras associated with these servers are consolidated in a single convenient view.
- Operators can access multiple independent surveillance systems simultaneously.

Configure and operate remote surveillance systems on a single client workstation

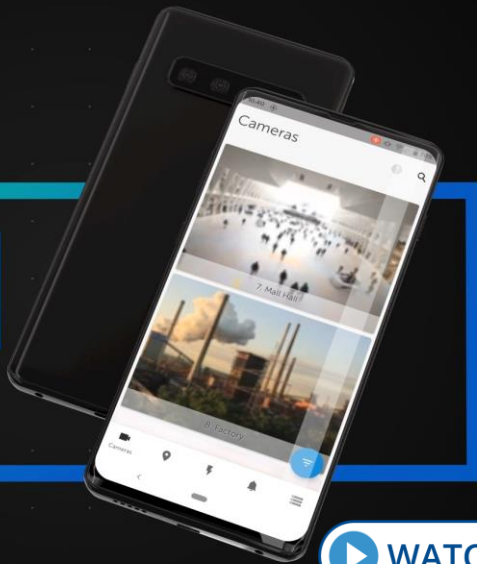


Mobile Clients

Free apps for iOS, Android, and Wear OS

Camera groups and layouts

Display cameras in different modes, according to configured layouts or groups



[WATCH VIDEO](#)

With our apps, you can:

- View live and recorded video.
- Quickly search for events.
- Control PTZ cameras.
- Work with fisheye cameras.
- Use digital zoom.
- Receive push notifications.
- Run macros.
- Use geo-maps.



Video from Mobile Devices

Axxon Camera app



- Install the free Axxon Camera app from Google Play.
- Use your Android device as a mobile camera.
- Video from the embedded camera will be streamed to Axxon One via the mobile internet or a Wi-Fi connection.



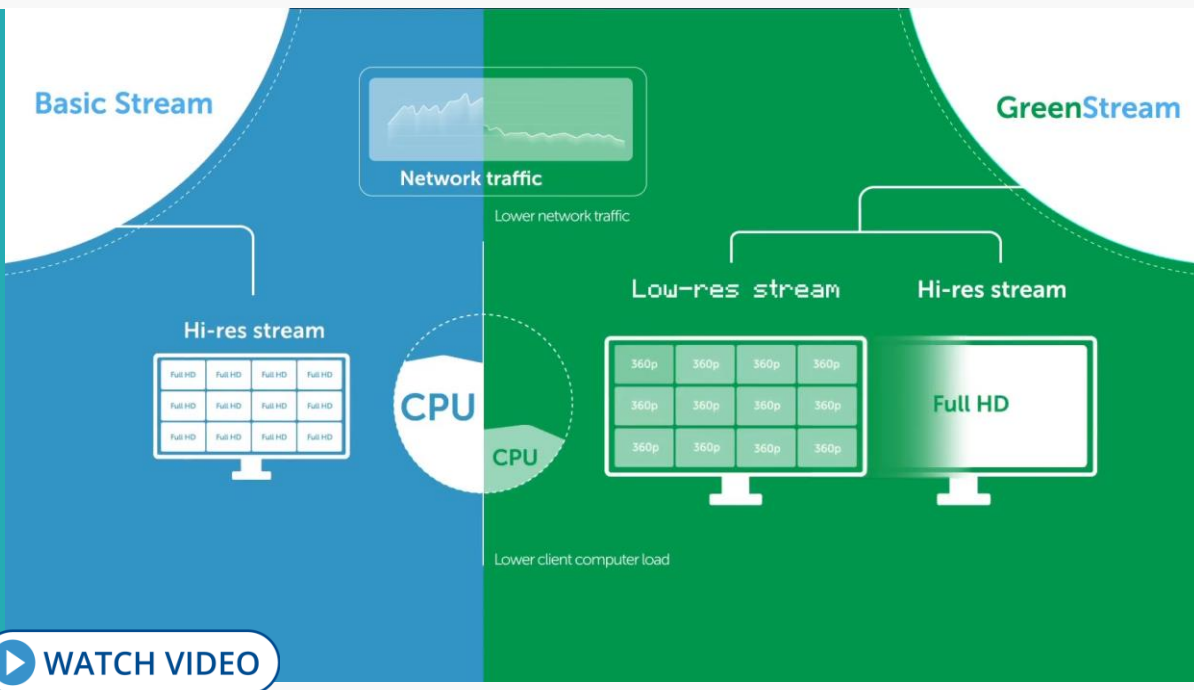
WATCH VIDEO

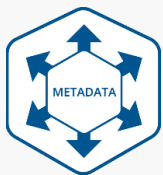


GreenStream

Adaptive video streaming

- GreenStream automatically selects the lowest-resolution camera stream sufficient for display, e.g., when multiple cameras are shown in one layout.
- When the operator opens a camera in full screen, GreenStream switches to the hi-res video stream from the camera.
- Adaptive video streaming saves network bandwidth and client computing resources.

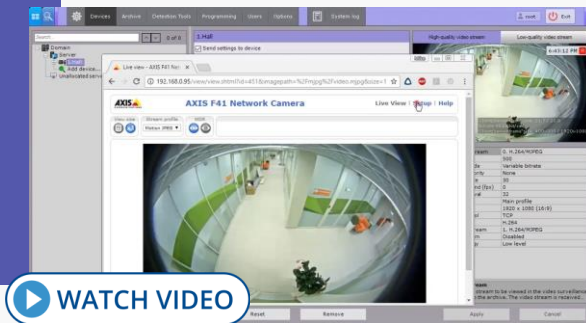
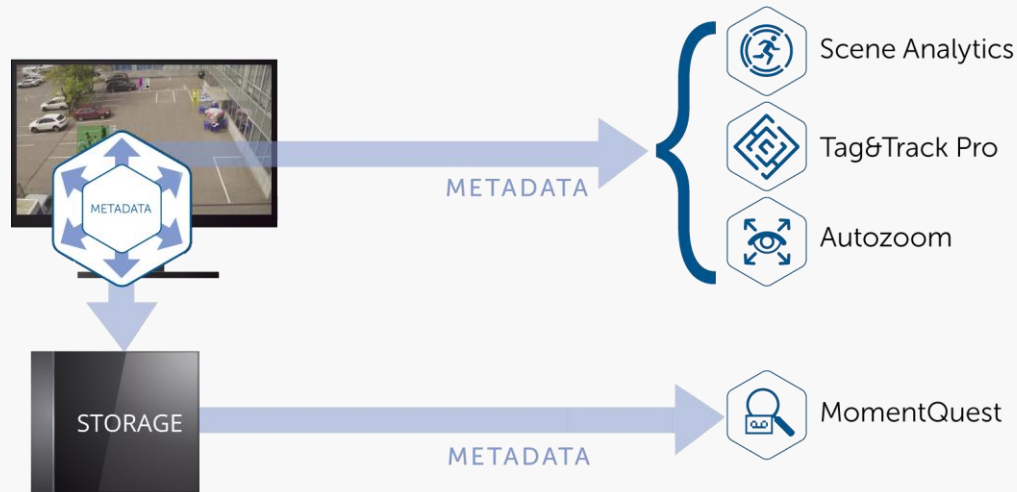




Metadata From IP Devices

Use edge analytics,
save server computing power

- Axxon One receives, stores, and links to video feeds event metadata from edge-based video detection tools.
- Axxon One also receives “raw” metadata (scene descriptions) from smart cameras to use it for real-time video analysis and forensic search.
- Metadata is generated on smart cameras. – No need to decompress video on the server side.
- CPU burden on the video server is significantly reduced. – Server can handle more video streams.





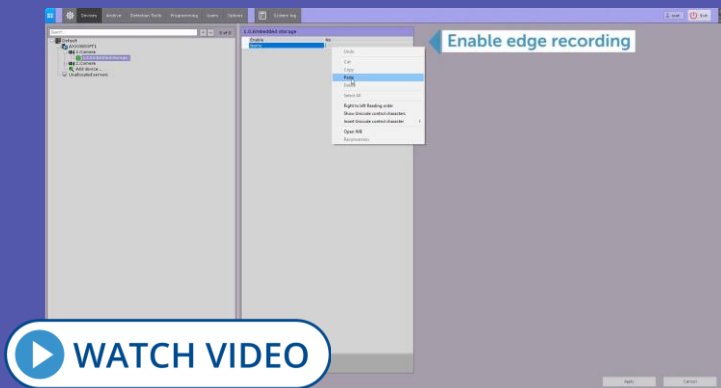
Support for Edge Storage



View and sync video
on SD cards

- Axxon One supports **ON-CAMERA (EDGE) STORAGE**.
- On-camera storage is automatically detected by Axxon One when the relevant camera is added to the system configuration.

- The viewing client can display **VIDEO RECORDED TO SD CARDS**.
- You can set up continuous replication of video, audio, and metadata from edge storage.

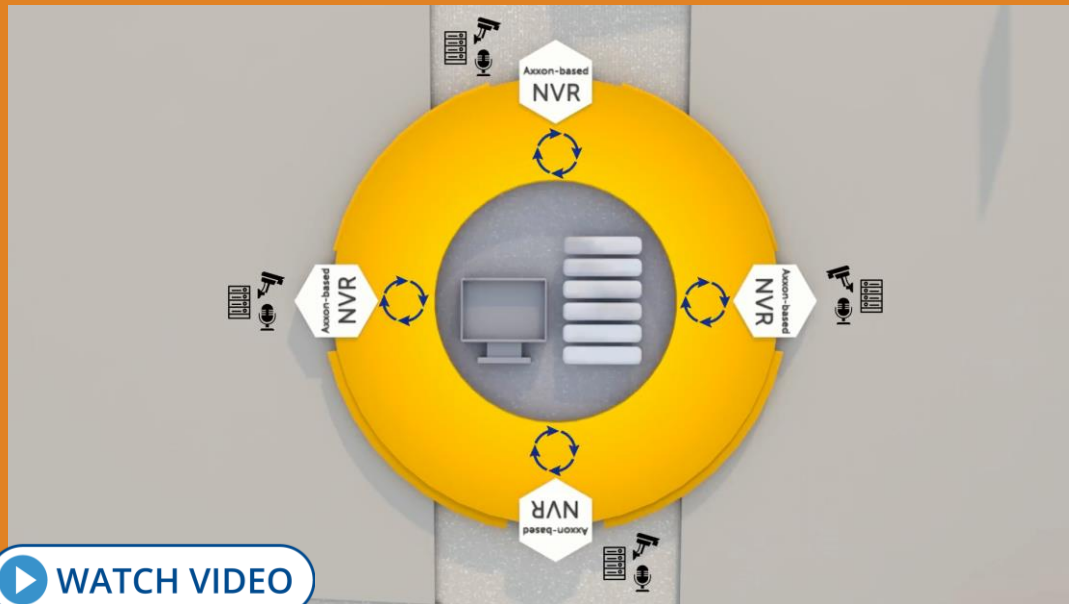




Archive Replication via Interoperability Driver

Centralized storage
for vehicle-based NVRs

Video footage can be synced between independent Axon One systems via the Interoperability Driver. Replication starts automatically when the source server is connected to the destination server. This can be used, for example, to centralize video storage of AxonSoft-based NVRs installed on vehicles.



[WATCH VIDEO](#)



Export Functions

Enhanced export features
for recorded video

- **Instant export** of still frames and videos from Live Video or Archive mode.
- **Export to .exe and password-protected .zip file.**
- **Simultaneous export** of recorded video from multiple cameras.
- **Manage the size of exported video files:** if the file size exceeds the value specified, the video is split into several files.
- **Pruning (frame dropping)** of exported video.
- **Privacy masking:** before exporting, select areas to block with solid color in the exported video sequence or image.
- **Export of image zones** (including dewarped fisheye frames).
- **Export of user comments to recorded video.**





Story Board

Quick video evidence retrieval

- Select video episodes containing an object of interest and recorded by different cameras, then export them to a single video file.
- Quickly retrieve the required video material and send it to relevant agencies/staff.

The screenshot displays the AxxonSoft Story Board software interface. It features a multi-camera view with three visible feeds: '1. Camera' (top left), '2. Camera' (top right), and '3. Camera' (bottom left). A pink rectangular selection box is overlaid on the first camera feed, with a blue text box labeled 'Set a time interval' and a timeline below it. The timeline shows a sequence of time stamps from 11:57:20 AM to 11:57:50 AM. On the right side, there is a vertical timeline labeled 'Event filter' with a list of time intervals. At the bottom right, a blue banner reads 'STORY BOARD' and 'Export videos from multiple cameras to a single video file'. A 'WATCH VIDEO' button is located at the bottom center.

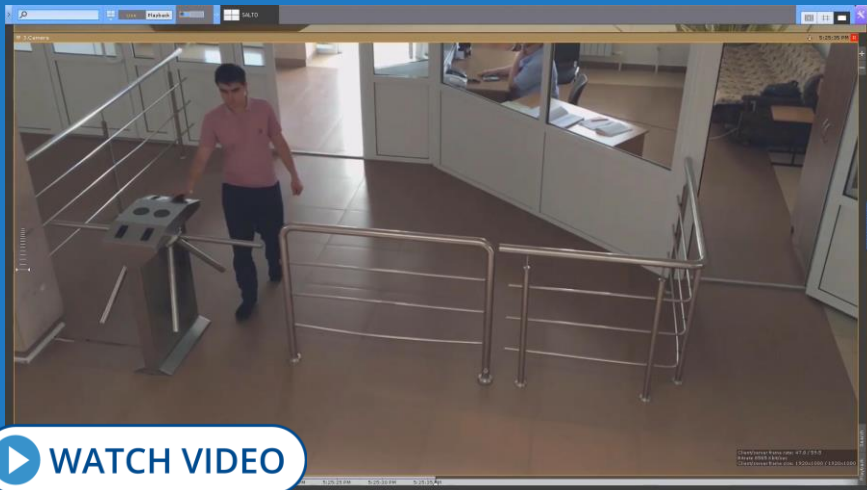
WATCH VIDEO



External Systems Integration

Receive and process event data from third-party systems

- Connect to external devices and systems: access control systems, security control panels, third-party software, and more.
- Quick and simple integration with third-party systems.



AXXON ONE CAN:

- Receive external events.
- Save them into its database.
- Cross-reference events with recorded video.
- Search events by a text string.
- Display event data in real time in a separate pane.
- Show events as captions on top of video.





Macros

Customizable event response scenarios

WATCH VIDEO

- Axxon One supports flexible configuration of complex system response to any specified set of events.
- Use IF..THEN logic to create a macro that automatically performs an unlimited number of actions in the system.
- Macros enable programming reactions to particular events at the system and device level.

Waiting
Camera 1. Alarm | 5 minutes

Timeout 5 minutes

Filters Camera 1. Alarm

Execute if event occurred

Record to archive
Always initiate | Archive

Record to archive
Open layout with camera

Execute if event did not occur

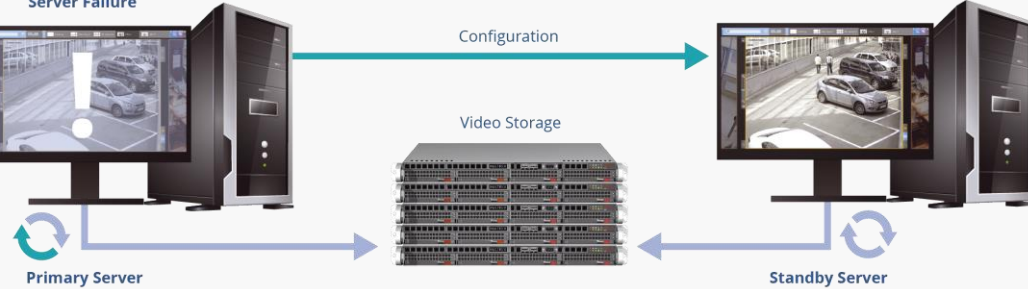
Switch over relay
Camera 1. | Relay 1 | 00:01:00



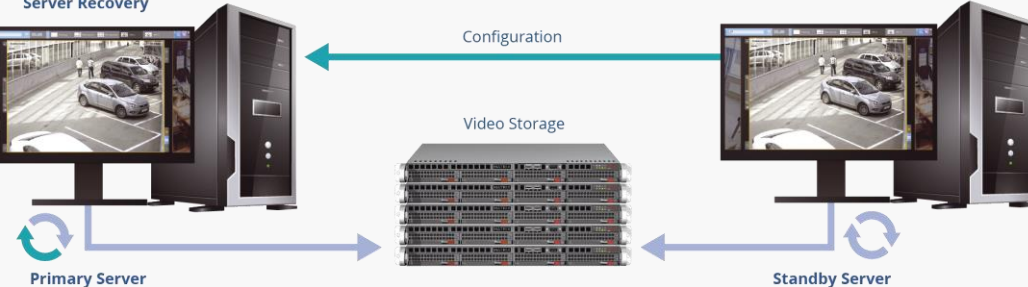
Failover

Server redundancy in distributed systems

Server Failure



Server Recovery



Failover quickly switches to a standby server when communication with the primary server is lost. The standby server automatically takes over all functions from the off-line or malfunctioning server. Live video streaming and recording resume immediately. You can suspend any server in the cluster with no system downtime, e.g., for maintenance.



Self-Diagnostics Service

System reliability



[WATCH VIDEO](#)

Self-diagnostics service collects system operation data:

- **CPU load**
- **Memory usage**
- **Available disk space**
- **Camera FPS, etc.**

This helps address issues by revealing their sources.

You can specify actions to launch in case of failures.



Licensing Server Support

Flexible license distribution

- A single license file for one or several Axxon One domains.
- An arbitrary distribution of licensed objects, such as cameras, detectors, etc., across servers.
- Display of available and consumed licenses, license feature owners, and license expiration date.



[WATCH VIDEO](#)



Maintenance and Support

- Free support
- No maintenance fees





System Update

Your VMS is always up-to-date

Silent servers update

You can update all servers within a cluster in silent mode. To do this, select the required distribution in the .zip archive or specify a web link. Servers can be updated simultaneously or in turn.

CLIENT UPDATE NOTIFICATION

Server name: Connecting to server...
Error: Invalid version 4.1.1.2016 is different from server version 4.1.1.2016. Do you want to update?
Connecting to domain...
Yes Cancel

WATCH VIDEO

✓ QA-T40 172.17.18.40 Manager Updating...	✓ QA-T42 172.17.18.42 Manager Updating...	✓ QA-T44 172.17.18.44 Manager Updating...
--	--	--

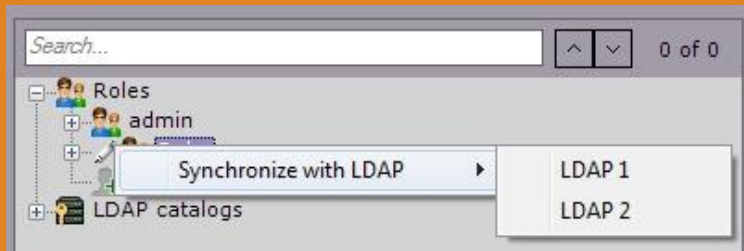
Automatic client update

When your Axxon One client connects to the server with a newer version of the Axxon One VMS, you will be prompted to update your client software. After confirmation, the update process is performed automatically.



LDAP Authentication

Integrate with existing enterprise network services

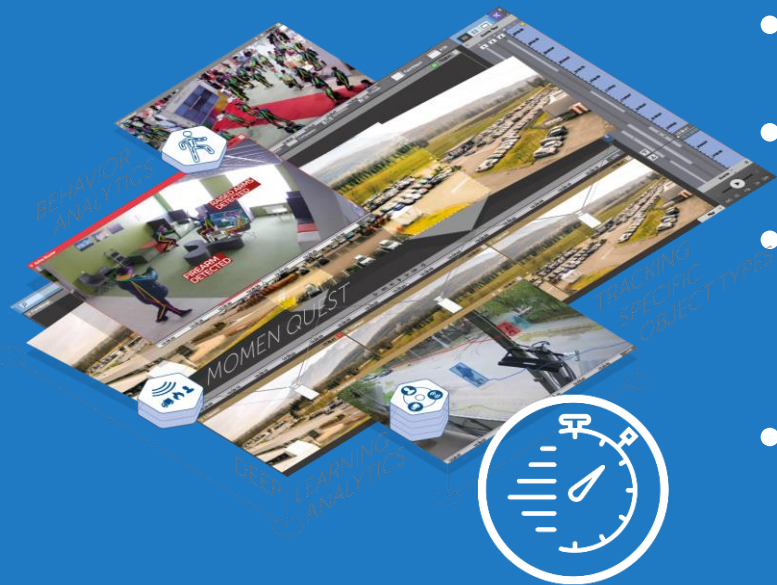


cn	entrydn
mark smith	cn=mark smith,ou=qa,ou=Groups,dc=example,dc=com
john williams	cn=john williams,ou=dev,ou=Groups,dc=example,dc=com
james miller	cn=james miller,ou=dev,ou=Groups,dc=example,dc=com
eric johns	cn=eric johns,ou=it,ou=common,ou=Groups,dc=example,dc=com
name1 surname1	cn=name1 surname1,ou=load,ou=Groups,dc=example,dc=com
name2 surname2	cn=name2 surname2,ou=load,ou=Groups,dc=example,dc=com
name3 surname3	cn=name3 surname3,ou=load,ou=Groups,dc=example,dc=com

This feature makes it possible to deduplicate user administration tasks for sysadmins at large companies. Operators can log in to a surveillance system by entering their domain credentials. The sysadmin connects an LDAP directory to Axxon One and selects which users to add. He can also associate VMS access rights with corporate directory groups. When a user profile is deleted on the LDAP server, it can be automatically deleted in Axxon One.



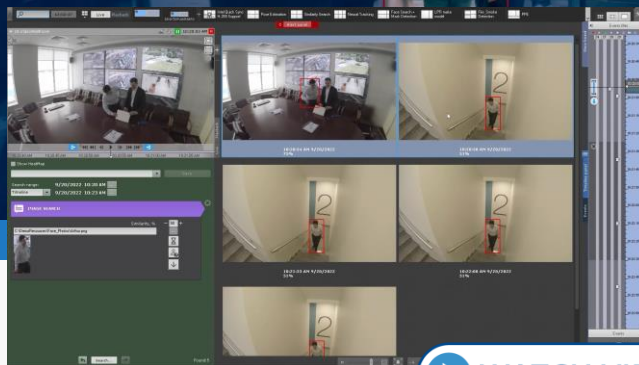
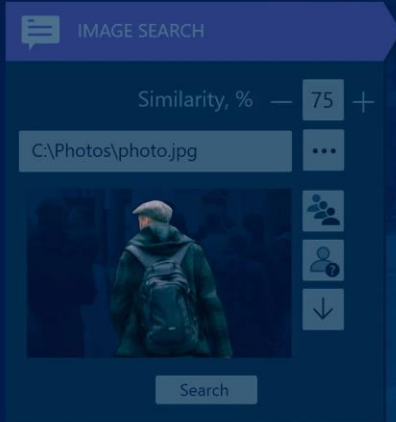
More Functionality



- Linux support
- UDP unicast/multicast support
- H.264 and H.265 support in the Web Client
- Support for ONVIF Profiles G, S, T



Similarity Search

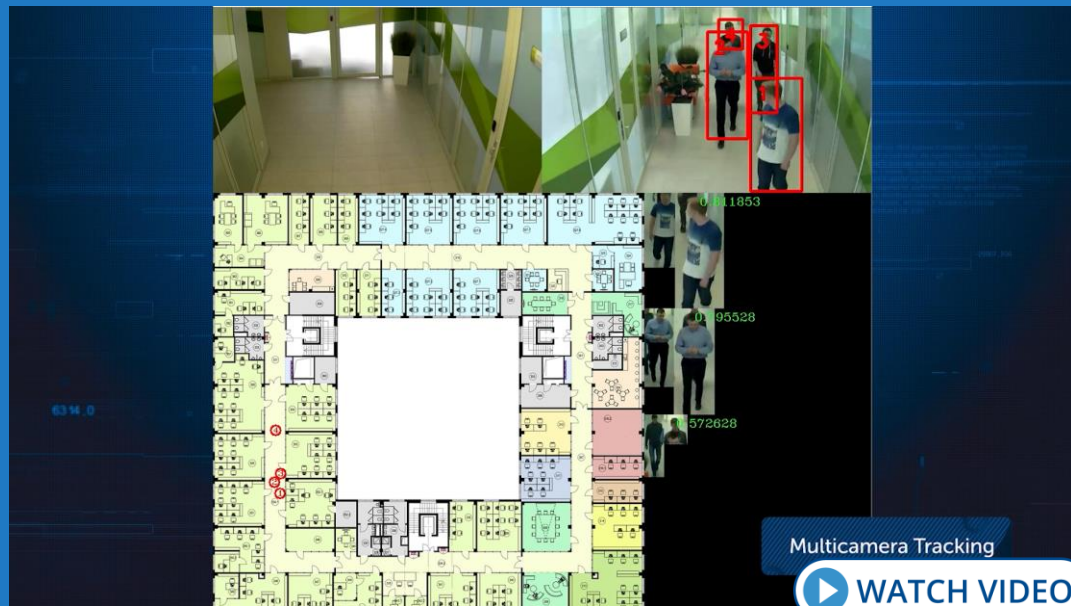


- AI analytics extracts human appearance characteristics and stores them in the database.
- You can select a person in the frame or upload a photo, and Axxon One will quickly sort through the database to find similar individuals in video footage from multiple cameras.





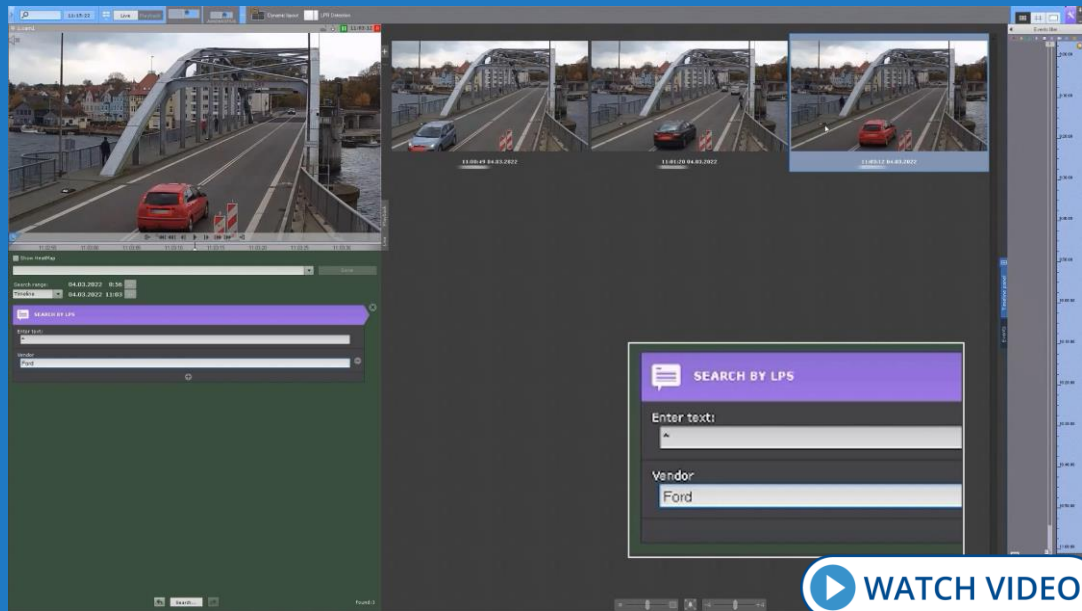
Multi-Camera Object Tracking



- AI analytics tracks objects across the FOVs of adjacent cameras based on similarity in appearance.
- Axxon One shows moving objects on the map.
- It automatically switches cameras in the layout so that you can follow an object of interest both in live and recorded video.



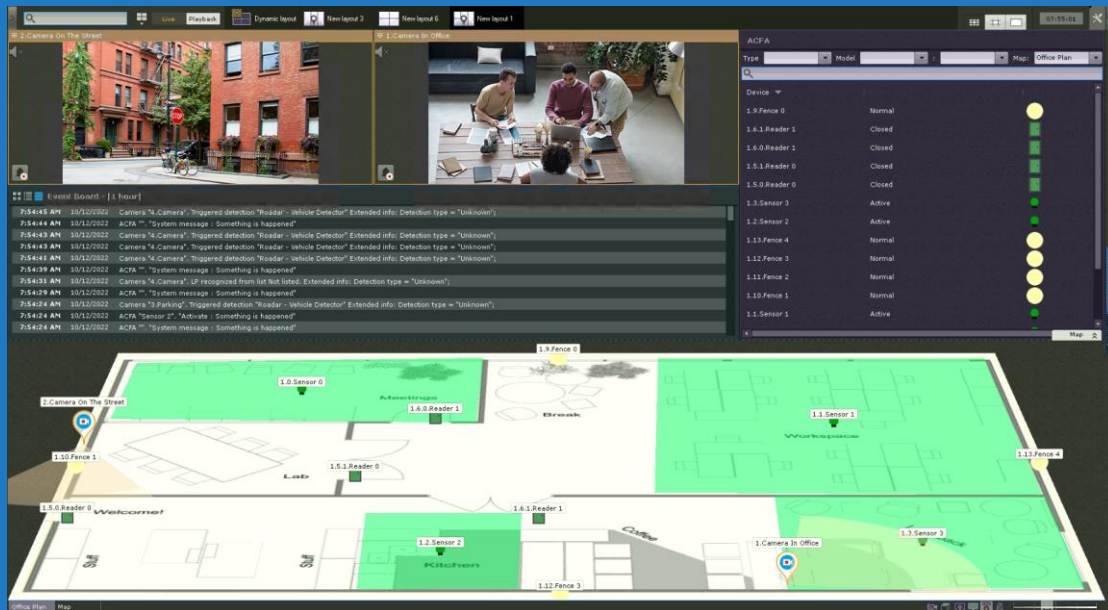
Vehicle Make and Model Recognition



- AI analytics determines vehicles' make and model, speed, and color in a traffic flow in real time.
- You can search for video recordings by all these vehicle features across multiple cameras.



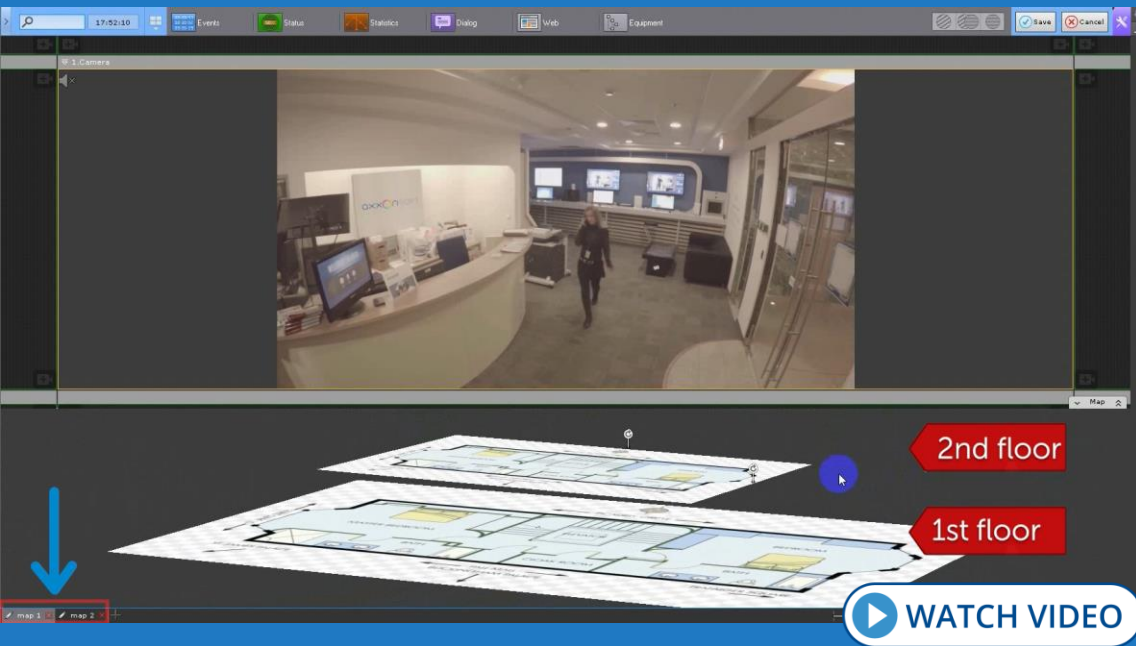
Integration with ACS, FSA, and PIDS



- Reading configuration from the hardware and adding devices to the object tree.
- Linking camera videos to events occurring in the integrated systems.
- Showing events and device statuses on the map and dedicated boards.
- Controlling devices using the map and the equipment board.



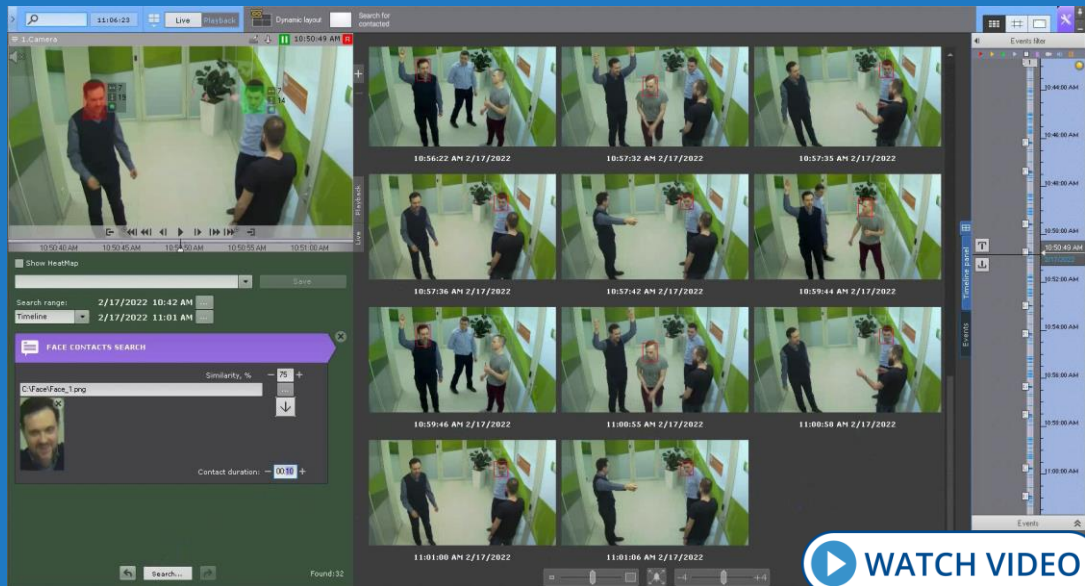
Multi-Story Building Plans on the Map



- A convenient tool for monitoring multi-story buildings.
- All cameras are superimposed on the map and color-coded by their status.
- You can instantly pinpoint where a selected camera is located and quickly switch between different floors' views.



Interaction Search



- Upload a person's photo or select their face in the frame.
- Quickly find individuals who interacted with this person, i.e., were simultaneously present in the cameras' FOVs during a specified period of time.



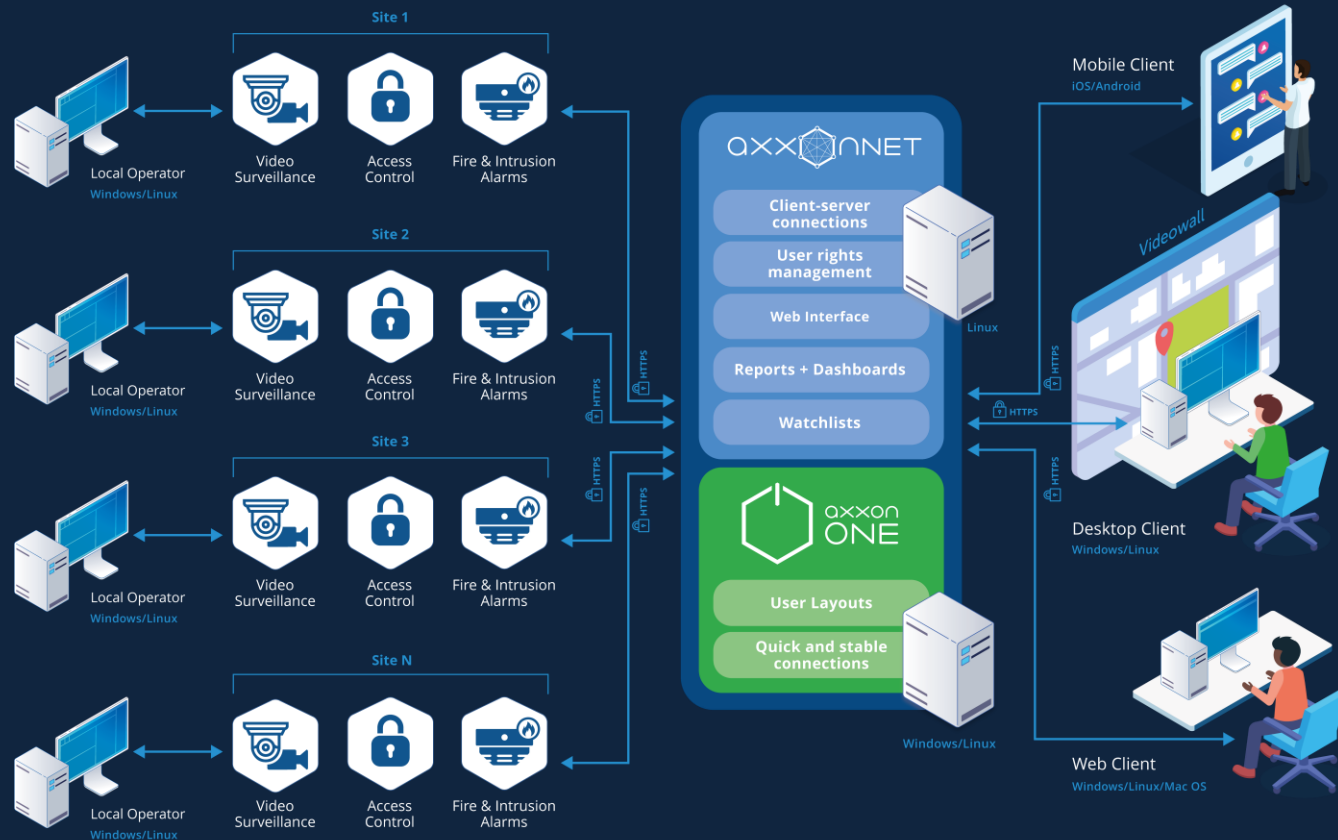
Object Storage



- Support for Microsoft Azure Storage and Amazon S3 compatible object storage, e.g., Seagate Lyve Cloud and Wasabi (more to come).
- Storing video footage from on-premises VMS in the cloud.



Unified Architecture



- Limitless system scalability.
- Easy integration of distributed sites into a single environment.
- Working over the internet or private networks.
- Bandwidth limitations do not affect the operation of local systems.



Axxon One Editions

Standard Features



Start



Professional



Enterprise



Unified

Max. number of servers in a distributed system	1	30	30	Unlimited
Maximum number of cameras in a system	64	Unlimited	Unlimited	Unlimited
Real-time analytics (Object Tracker)	✓	✓	✓	✓
Edge analytics (camera metadata)	✓	✓	✓	✓
Edge storage (playback only)	✓	✓	✓	✓
GreenStream adaptive bandwidth management	✓	✓	✓	✓
Interactive 3D Map	✓	✓	✓	✓
Web Client	✓	✓	✓	✓
TimeSlice search (search by time intervals)	✓	✓	✓	✓
Macros (event-response scenarios)	✓	✓	✓	✓
ONVIF Profiles S, G, T	✓	✓	✓	✓
Video bookmarking (searchable text comments)	✓	✓	✓	✓
AxxonNet cloud service	✓	✓	✓	✓
AxxonNet reports	✓	✓	✓	✓
Cross-System Client	✗	✓	✓	✓
Storage replication	✗	✗	✓	✓
Failover	✗	✗	✓	✓
Videowall	✗	✗	✓	✓
LDAP service	✗	✗	✓	✓



Axxon One Editions

AI Features and Retail License Pack



Start



Professional



Enterprise



Unified

MomentQuest smart forensic search

Multi-camera face search

Face mask detection

Multi-camera LPR/ANPR search*

Tag&Track (PTZ object tracking)

AI human/vehicle detection

AI fire and smoke detection

People counting

Heat map

Queue detection



Add-on



Personal Protective Equipment Detection

Helmets

Hi-vis vests

Protective clothing



Add-on

Add-on

Add-on

Human Behavior Analytics

Man down

Hands up

Squatting man

Social distancing violation



Add-on

Add-on

Add-on

* Please contact us for more information on our LPR/ANPR licensing policy and supported countries.



Axxon One Editions

Additional Modules



Start



Professional



Enterprise



Unified

Integration with Access Control System (licensed as an add-on in all editions)**	×	50 readers max.	100 readers max.	Unlimited readers
Integration with Fire/Security Alarm System**	×	Add-on	Add-on	Add-on
Integration with Perimeter Intrusion Detection System**	×	Add-on	Add-on	Add-on
Support for external event sources (POS, other devices)	Add-on	Add-on	Add-on	Add-on
Facial recognition (positive/negative watchlists)	×	Add-on	Add-on	Add-on
LPR/ANPR (positive/negative watchlists)*	×	Add-on	Add-on	Add-on
Custom AI analytics	×	Add-on	Add-on	Add-on
Water level detection	×	Add-on	Add-on	Add-on
Offline Analytics (smart search in imported videos)**	×	Add-on	Add-on	✓
Multi-camera object tracking**	×	Add-on	Add-on	✓
Similarity Search**	×	×	Add-on	✓
Datacenter Domain Unification	×	×	×	✓

* Please contact us for more information on our LPR/ANPR licensing policy and supported countries.

** To be released in the next version.



THANK YOU!

www.axxonsoft.com